

DETAILS

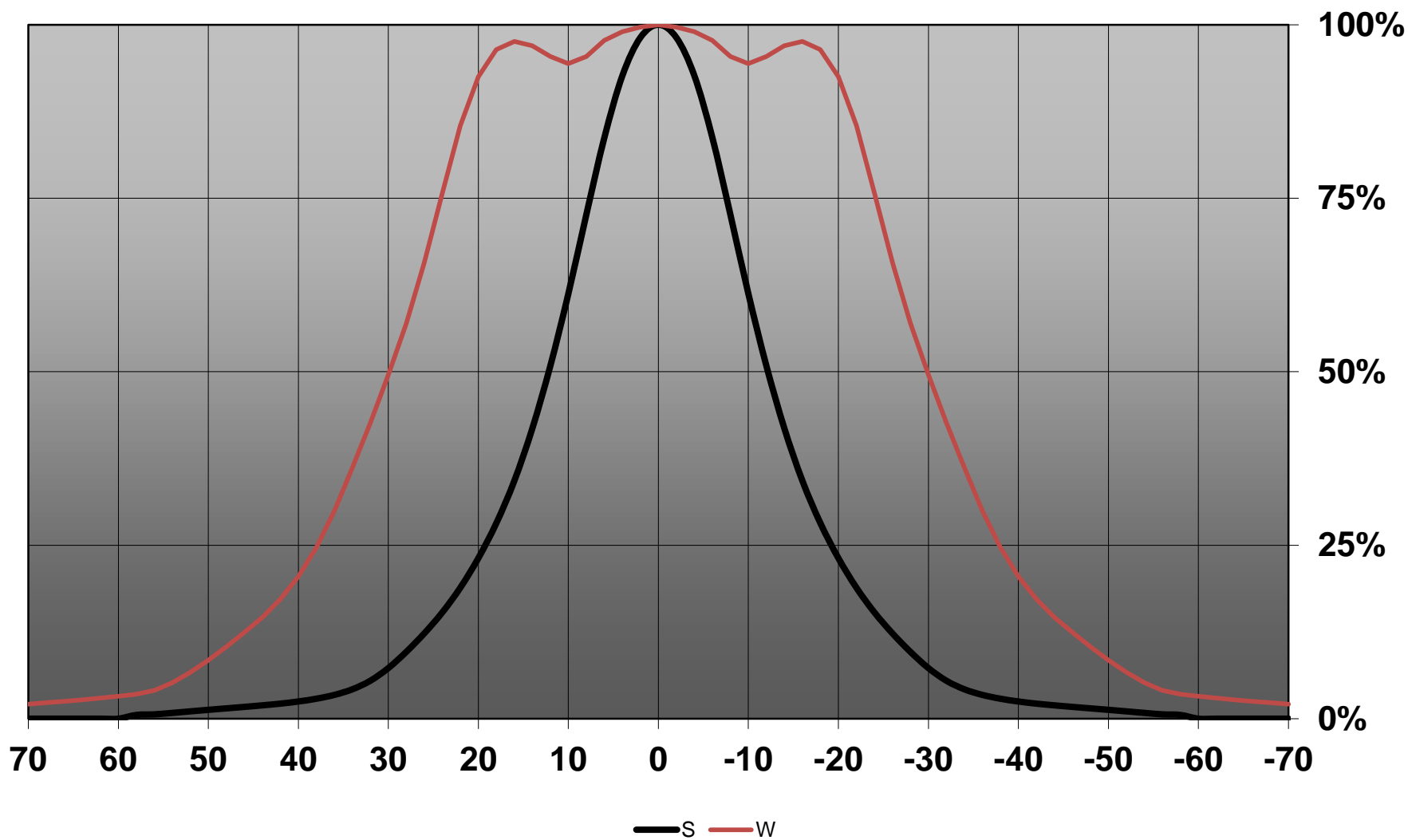
Product Number	CC13052_ZOWIE-MINI
Family	Zowie
Type	Lens system
Color	clear
Diameter	14,83 mm
Height	11,46 mm
Style	round
Optic Material	PMMA,PMMA
Holder Material	
Fastening	
Status	production ready
ROHS Compliant	Yes
Date Updated	11/11/2016



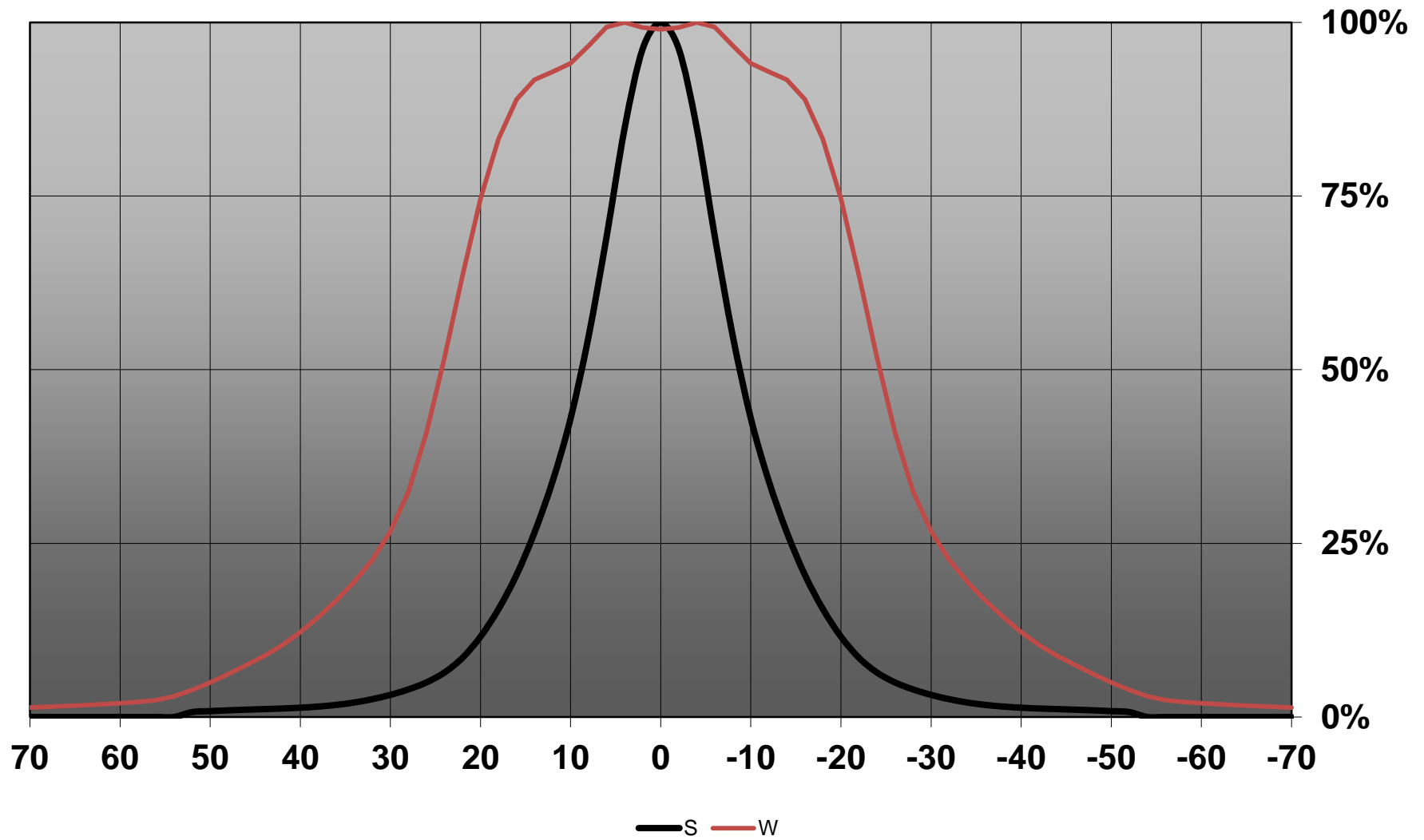
OPTICAL PROPERTIES

LED	Viewing Angle	Light Beam	Efficiency	cd/lm	Connector
XP-G	24+60 deg	Zoom	-	-	-
XP-E	18+49 deg	Zoom	-	-	-
LUXEON A	25+56 deg	Zoom	-	-	-
NVSxx19A	28+56 deg	Zoom	-	-	-
Oslon Square EC	24+54 deg	Zoom	-	-	-

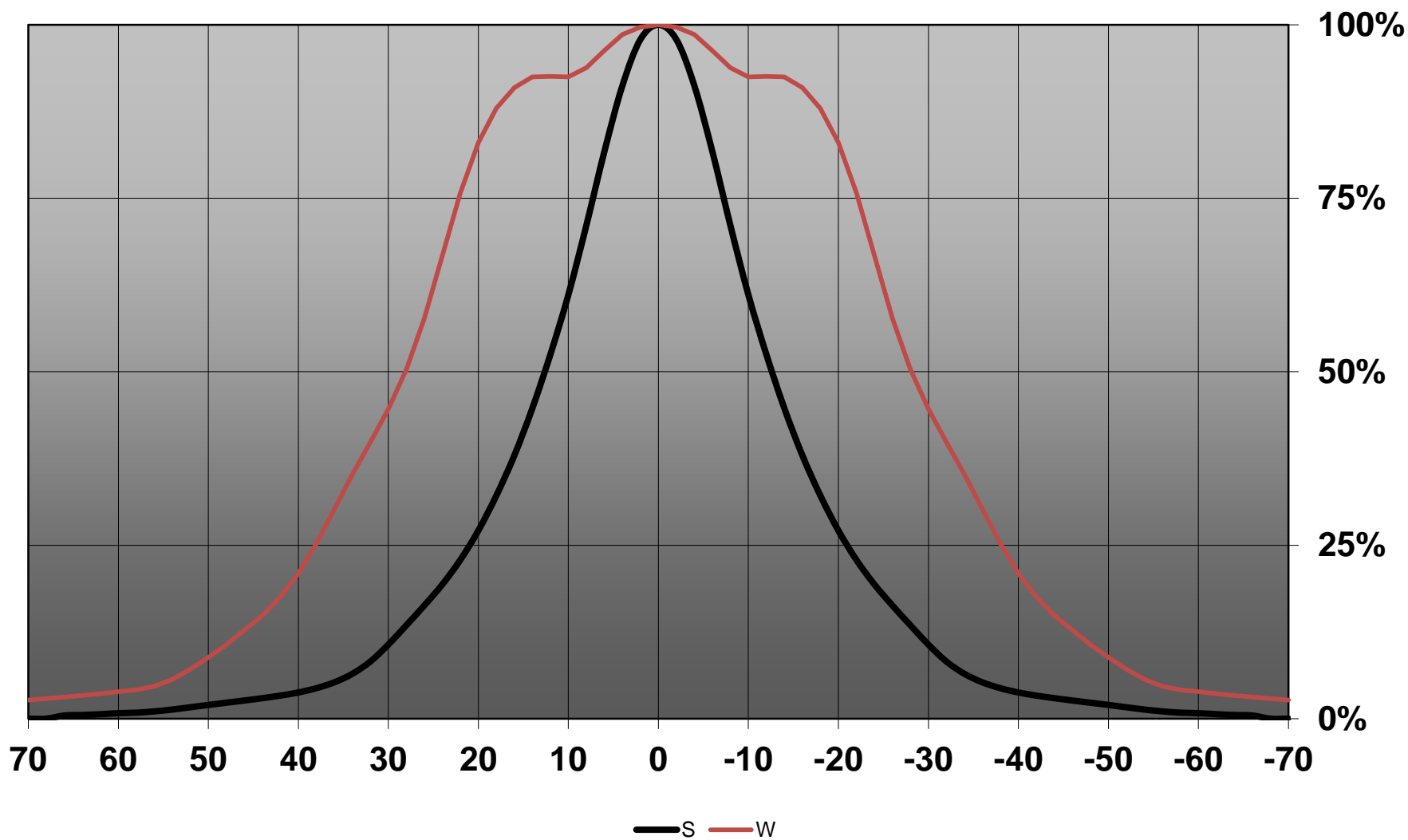
Relative intensity of CC13052_ZOWIE-MINI-XPG



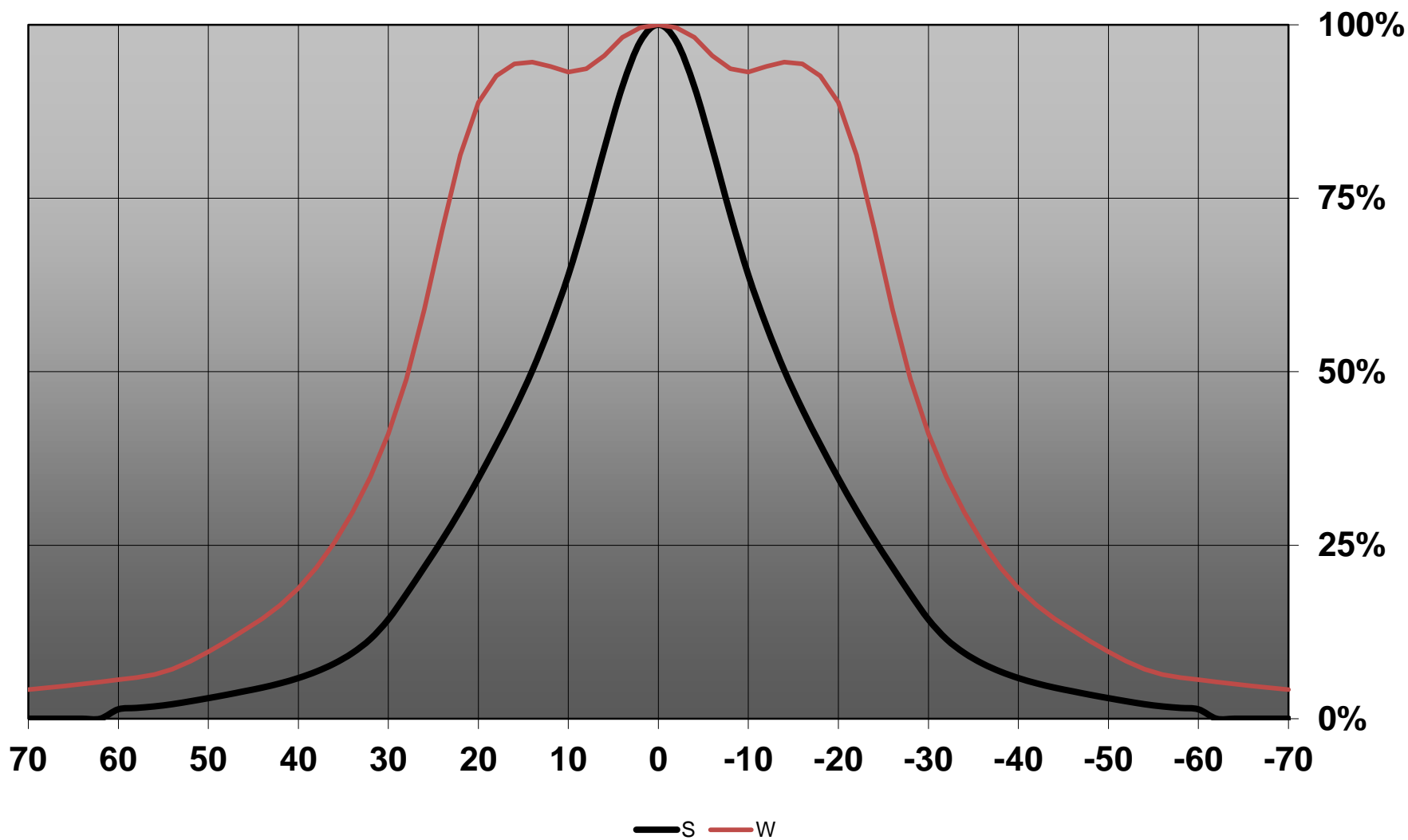
Relative intensity of CC13052_ZOWIE-MINI-XPE



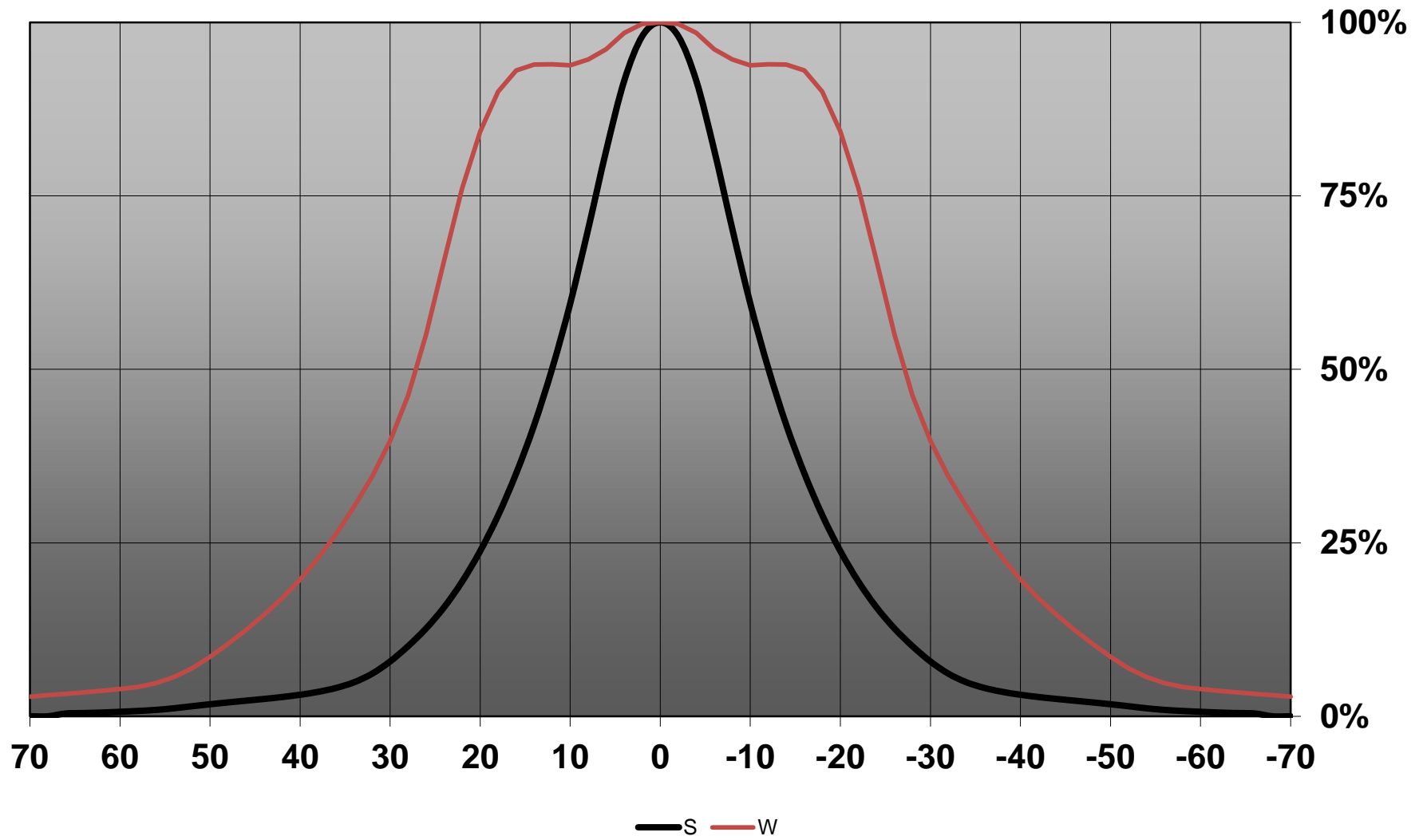
Relative intensity of CC13052_ZOWIE-MINI-LuxA



Relative intensity of CC13052_ZOWIE-MINI-NVS19



Relative intensity of CC13052_ZOWIE-MINI-EC



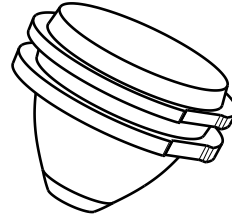
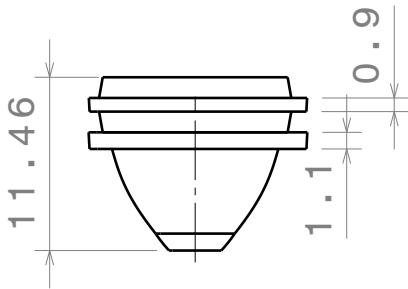
D

C

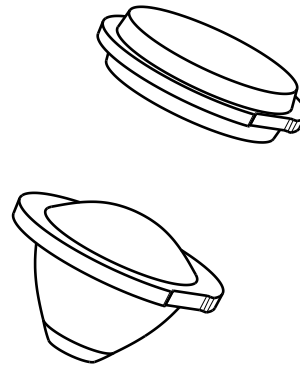
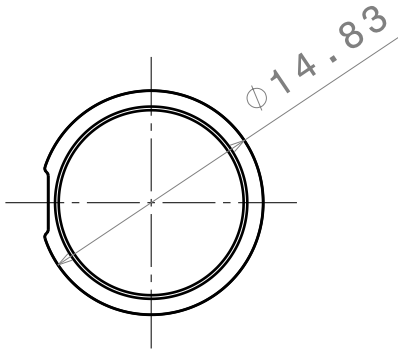
B

A

INDEX	PART NO	DESCRIPTION	MATERIAL
1			



Spot position
Lens distance = 0mm



Wide position
Lens distance = 11mm

Tolerances if not otherwise shown:
According to DIN ISO 2768-1
Linear measures:
Up to 30mm class M, otherwise class C.

According to DIN ISO 2768-2
Form and position:
class L

Raw material: PMMA

This drawing is our property.
It can't be reproduced
or communicated without
our written agreement.

LEDIL Ledil Oy
Salorankatu 10
FIN 24240 SALO
Finland

DRAWING TITLE | Part Drawing

DATA SHEET ZOWIE-MINI

DRAWN BY | DATE
pl | 9/20/2012

CHECKED BY | DATE
- | -

DESIGNED BY | DATE
- | -

SIZE	PART NUMBER	REV
A4	CC13052	001

SCALE	WEIGHT	SHEET
2:1	0.00108kg	1/1

D

A

NOTE: The typical divergence will be changed by different color, chip size and chip position tolerance. The typical total divergence is the full angle measured where the luminous intensity is half of the peak value.