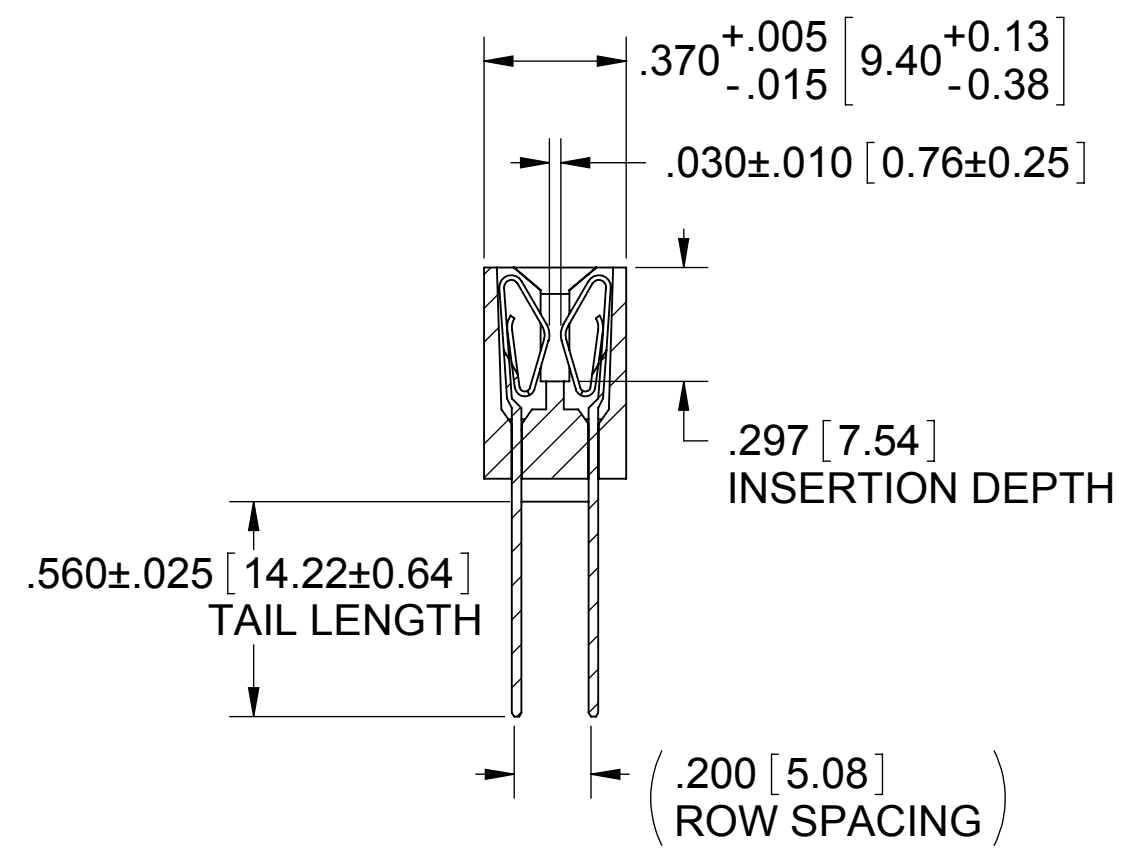
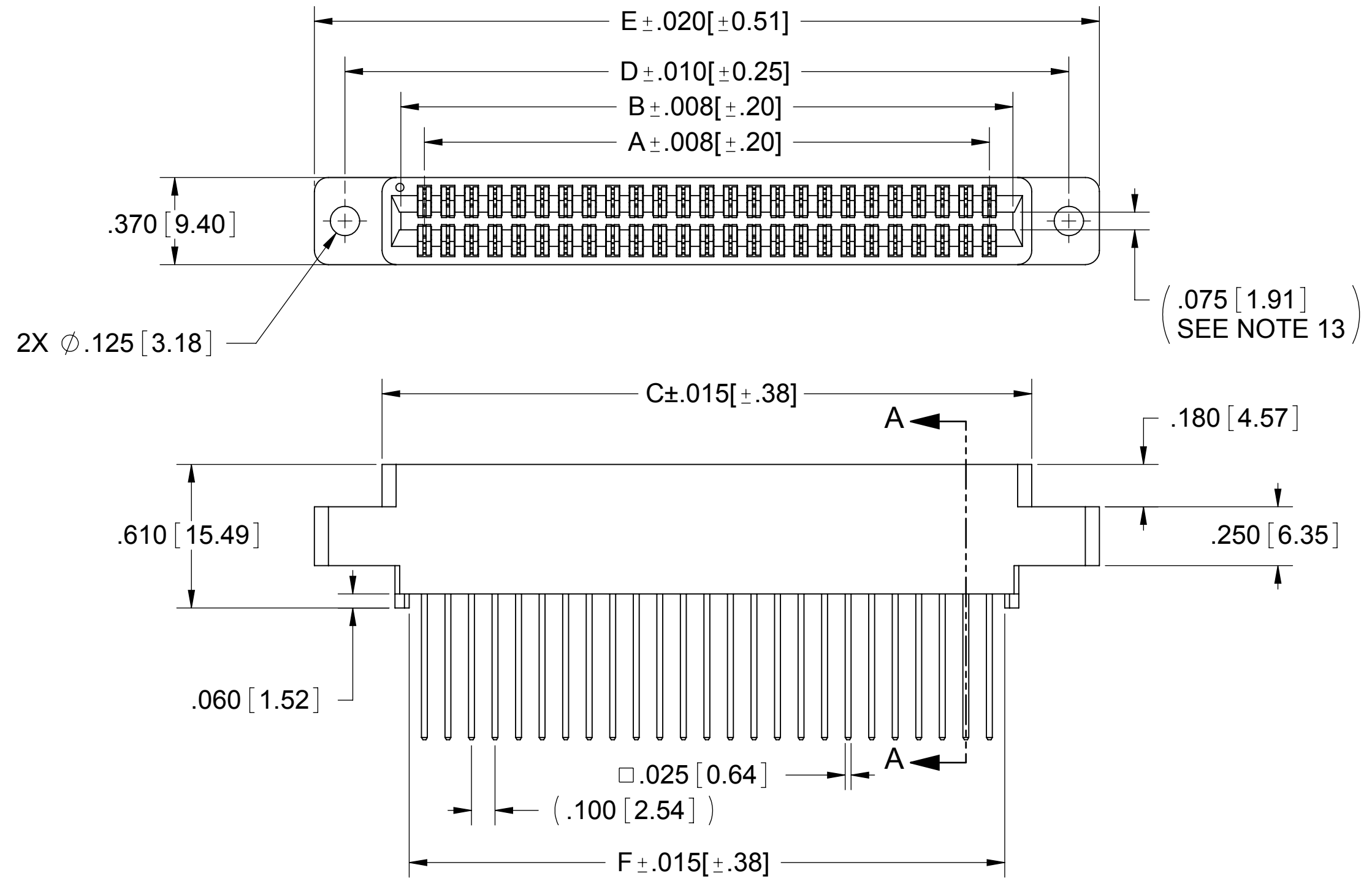
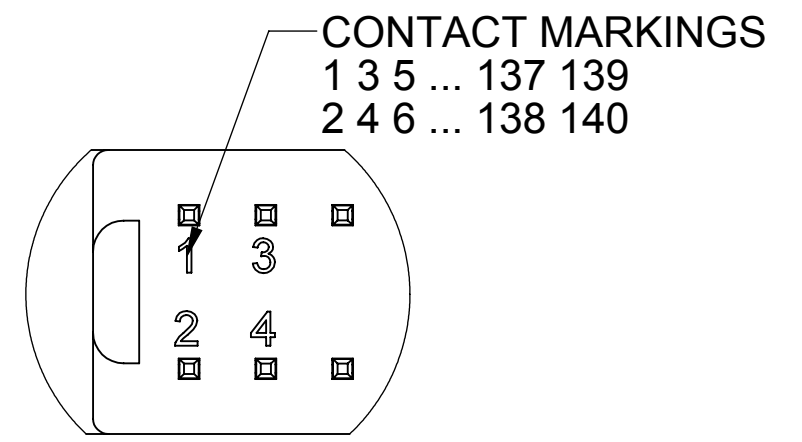
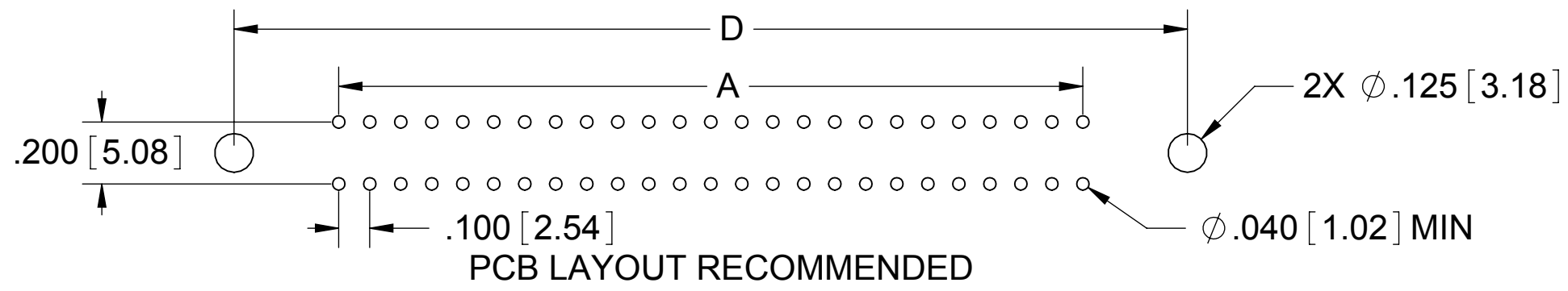


REVISIONS				
REV.	ECO. NO	DESCRIPTION	DATE	BY
A	871	INITIAL RELEASE	12/29/2005	HT
B	2491	UPDATED PN CODING TO INCLUDE MTL, COLOR & PLATING OPTIONS, NOTE & DWG FORMAT, INSERTION FORCE TO 8 OZ MAX, ADD CONTACT GAP DIM, TAIL TOLERANCE	11/8/2011	JH



MPSL - _100 - _ - DW - 5_ - -



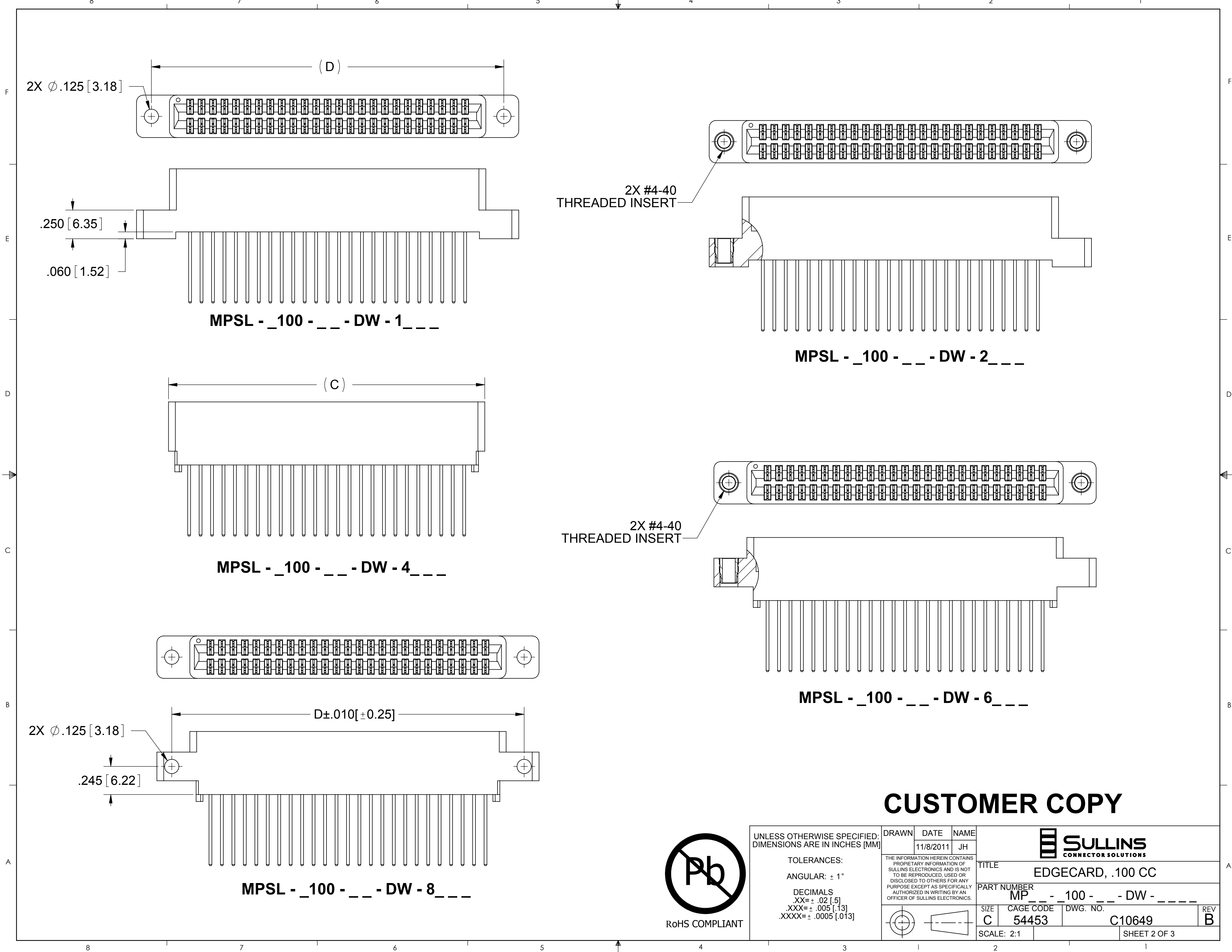
- NOTES:**
- INSULATOR MATERIAL: SEE PART NUMBER CODING
 - CONTACT MATERIAL: SEE PART NUMBER CODING
 - PLATING: SEE PART NUMBER CODING
 - OPERATING TEMPERATURE: SEE PART NUMBER CODING
 - PROCESSING TEMP: SEE PART NUMBER CODING
 - UL FLAMMABILITY RATING: 94V-0
 - DIELECTRIC WITHSTANDING VOLTAGE: 750 VAC MINIMUM AT SEA LEVEL
 - CURRENT RATING: 3 AMP PER CONTACT
 - CONTACT RESISTANCE: 30 MILLI OHMS MAX
 - INSULATION RESISTANCE: 5000 MEGA OHMS
 - DURABILITY: 500 CYCLES MIN
 - CONNECTOR IDENTIFICATION: THE PART SHALL BE MARKED WITH A PART NUMBER AND LOT CODE
 - BOARD THICKNESS ACCOMMODATED: .062 ±.008 [1.57 ±0.20]
 - INSERTION FORCE: 8 OZ MAX PER CONTACT PAIR WHEN USING A .062 [1.57] TEST BLADE
 - WITHDRAWAL FORCE: 1 OZ MIN PER CONTACT PAIR USING .062 [1.57] PCB

REF: __C__DRM_ (- S38, S81, S328)

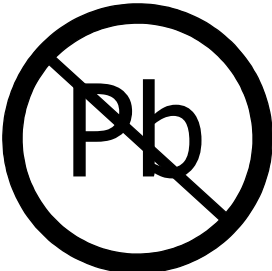
CUSTOMER COPY



UNLESS OTHERWISE SPECIFIED: DIMENSIONS ARE IN INCHES [MM]		DRAWN	DATE	NAME	
TOLERANCES: ANGULAR: ± 1° DECIMALS .XX = ± .02 [.5] .XXX = ± .005 [.13] .XXXX = ± .0005 [.013]			11/8/2011	JH	
THE INFORMATION HEREIN CONTAINS PROPRIETARY INFORMATION OF SULLINS ELECTRONICS AND IS NOT TO BE REPRODUCED, USED OR DISCLOSED TO OTHERS FOR ANY PURPOSE EXCEPT AS SPECIFICALLY AUTHORIZED IN WRITING BY AN OFFICER OF SULLINS ELECTRONICS.					PART NUMBER MP - _100 - _ - DW - _ - -
SIZE	CAGE CODE	DWG. NO.	REV		
C	54453	C10649	B		
SCALE: 2:1		SHEET 1 OF 3			



CUSTOMER COPY



RoHS COMPLIANT

UNLESS OTHERWISE SPECIFIED: DIMENSIONS ARE IN INCHES [MM]	DRAWN	DATE	NAME	
		11/8/2011	JH	
TOLERANCES: ANGULAR: $\pm 1^\circ$ DECIMALS .XX = $\pm .02$ [.5] .XXX = $\pm .005$ [.13] .XXXX = $\pm .0005$ [.013]	<small>THE INFORMATION HEREIN CONTAINS PROPRIETARY INFORMATION OF SULLINS ELECTRONICS AND IS NOT TO BE REPRODUCED, USED OR DISCLOSED TO OTHERS FOR ANY PURPOSE EXCEPT AS SPECIFICALLY AUTHORIZED IN WRITING BY AN OFFICER OF SULLINS ELECTRONICS.</small>			TITLE
				EDGECARD, .100 CC
PART NUMBER				REV
MP _ - _100 - _ - DW - _ - -				B
SIZE	CAGE CODE	DWG. NO.		
C	54453	C10649		
SCALE: 2:1			SHEET 2 OF 3	

PART NUMBER	NO. OF POSITION	A		B		C		D		E		F	
		IN	MM	IN	MM	IN	MM	IN	MM	IN	MM	IN	MM
MP - 100-06-DW-	6	0.500	12.70	0.700	17.78	0.875	22.23	1.175	29.85	1.435	36.45	0.750	19.05
MP - 100-08-DW-	8	0.700	17.78	0.900	22.86	1.075	27.31	1.375	34.93	1.635	41.53	0.950	24.13
MP - 100-10-DW-	10	0.900	22.86	1.100	27.94	1.275	32.39	1.575	40.01	1.835	46.61	1.150	29.21
MP - 100-12-DW-	12	1.100	27.94	1.300	33.02	1.475	37.47	1.775	45.09	2.035	51.69	1.350	34.29
MP - 100-13-DW-	13	1.200	30.48	1.400	35.56	1.575	40.01	1.875	47.63	2.135	54.23	1.450	36.83
MP - 100-15-DW-	15	1.400	35.56	1.600	40.64	1.775	45.09	2.075	52.71	2.335	59.31	1.650	41.91
MP - 100-17-DW-	17	1.600	40.64	1.800	45.72	1.975	50.17	2.275	57.79	2.535	64.39	1.850	46.99
MP - 100-18-DW-	18	1.700	43.18	1.900	48.26	2.075	52.71	2.375	60.33	2.635	66.93	1.950	49.53
MP - 100-20-DW-	20	1.900	48.26	2.100	53.34	2.275	57.79	2.575	65.41	2.835	72.01	2.150	54.61
MP - 100-22-DW-	22	2.100	53.34	2.300	58.42	2.475	62.87	2.775	70.49	3.035	77.09	2.350	59.69
MP - 100-24-DW-	24	2.300	58.42	2.500	63.50	2.675	67.95	2.975	75.57	3.235	82.17	2.550	64.77
MP - 100-25-DW-	25	2.400	60.96	2.600	66.04	2.775	70.49	3.075	78.11	3.335	84.71	2.650	67.31
MP - 100-28-DW-	28	2.700	68.58	2.900	73.66	3.075	78.11	3.375	85.73	3.635	92.33	2.950	74.93
MP - 100-30-DW-	30	2.900	73.66	3.100	78.74	3.275	83.19	3.575	90.81	3.835	97.41	3.150	80.01
MP - 100-31-DW-	31	3.000	76.20	3.200	81.28	3.375	85.73	3.675	93.35	3.935	99.95	3.250	82.55
MP - 100-35-DW-	35	3.400	86.36	3.600	91.44	3.775	95.89	4.075	103.51	4.335	110.11	3.650	92.71
MP - 100-36-DW-	36	3.500	88.90	3.700	93.98	3.875	98.43	4.175	106.05	4.435	112.65	3.750	95.25
MP - 100-40-DW-	40	3.900	99.06	4.100	104.14	4.275	108.59	4.575	116.21	4.835	122.81	4.150	105.41
MP - 100-43-DW-	43	4.200	106.68	4.400	111.76	4.575	116.21	4.875	123.83	5.135	130.43	4.450	113.03
MP - 100-44-DW-	44	4.300	109.22	4.500	114.30	4.675	118.75	4.975	126.37	5.235	132.97	4.550	115.57
MP - 100-50-DW-	50	4.900	124.46	5.100	129.54	5.275	133.99	5.575	141.61	5.835	148.21	5.150	130.81
MP - 100-55-DW-	55	5.400	137.16	5.600	142.24	5.775	146.69	6.075	154.31	6.335	160.91	5.650	143.51
MP - 100-60-DW-	60	5.900	149.86	6.100	154.94	6.275	159.39	6.575	167.01	6.835	173.61	6.150	156.21
MP - 100-61-DW-	61	6.000	152.40	6.200	157.48	6.375	161.93	6.675	169.55	6.935	176.15	6.250	158.75
MP - 100-65-DW-	65	6.400	162.56	6.600	167.64	6.775	172.09	7.075	179.71	7.335	186.31	6.650	168.91
MP - 100-70-DW-	70	6.900	175.26	7.100	180.34	7.275	184.79	7.575	192.41	7.835	199.01	7.150	181.61

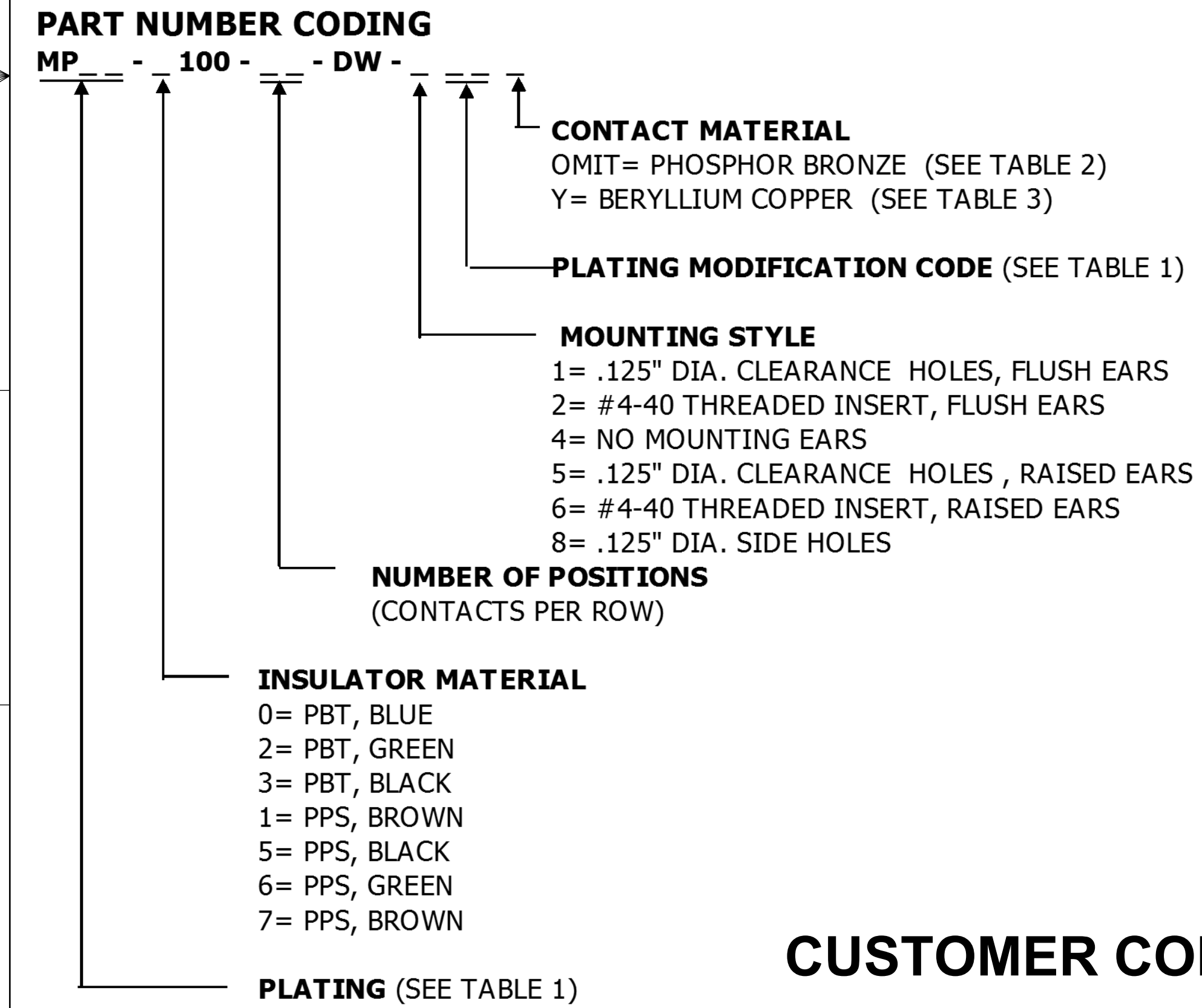


TABLE 1 (PLATING):

ALL PLATINGS HAVE .000050" NICKEL UNDERPLATE

	CONTACT SURFACE	TERMINATION	PLATING MODIFICATION CODE
MP	.000010" GOLD OVERALL		OMIT
	.000030" GOLD	.000010" GOLD OVERALL	G
MPSL	.000010" GOLD	.000100" PURE TIN, MATTE	K
	.000030" GOLD	.000100" PURE TIN, MATTE	GK
MPL	.000100" PURE TIN, MATTE OVERALL		K

(MPL PLATING AVAILABLE WITH PHOSPHOR BRONZE CONTACTS ONLY)

TABLE 2 (PHOSPHOR BRONZE CONTACTS):

INSULATOR MATERIAL CODE	OPERATING TEMPERATURE	PROCESSING TEMPERATURE
0, 2, 3	-65°C TO +125°C	260°C FOR 10 SEC MAX (230°C, 30 SEC)
1, 5, 6, 7	-65°C TO +125°C	260°C FOR 120 SEC MAX

TABLE 3 (BERYLLIUM COPPER CONTACTS):

INSULATOR MATERIAL CODE	OPERATING TEMPERATURE	PROCESSING TEMPERATURE
0, 2, 3	-65°C TO +125°C	260°C FOR 10 SEC MAX (230°C, 30 SEC)
1, 5, 6, 7	-65°C TO +150°C	260°C FOR 120 SEC MAX

CUSTOMER COPY



UNLESS OTHERWISE SPECIFIED: DIMENSIONS ARE IN INCHES [MM]

TOLERANCES:
 ANGULAR: ± 1°
 DECIMALS
 .XX= ± .02 [.5]
 .XXX= ± .005 [.13]
 .XXXX= ± .0005 [.013]

DRAWN: 11/8/2011 NAME: JH

THE INFORMATION HEREIN CONTAINS PROPRIETARY INFORMATION OF SULLINS ELECTRONICS AND IS NOT TO BE REPRODUCED, USED OR DISCLOSED TO OTHERS FOR ANY PURPOSE EXCEPT AS SPECIFICALLY AUTHORIZED IN WRITING BY AN OFFICER OF SULLINS ELECTRONICS.

SULLINS CONNECTOR SOLUTIONS

TITLE: EDGECARD, .100 CC

PART NUMBER: MP - 100 - - DW -

SIZE: C CAGE CODE: 54453 DWG. NO.: C10649 REV: B

SCALE: 2:1 SHEET 3 OF 3