

# Bar Lights

## LDL2 series

Refer to our website for product details.

CCS LDL2

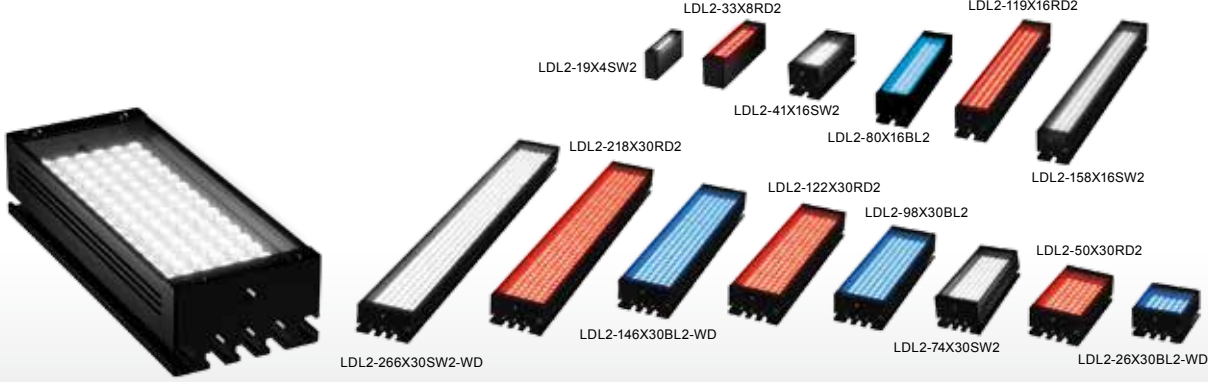
Search



You can also use your smartphone or cell phone.

For quick access.

Provides direct light from an emitting part equipped with LEDs in straight lines



**Applications** Various inspections for reading text, visual inspection for damage on long and thin workpieces, damage inspection for metal with hairline finishing, light source for a line sensor camera, various inspections to detect foreign material, etc.

### Rich lineup with 141 models\*

We have a lineup of 141 models\*, such as combinations of the size and emitting width of the emitting surface, directional characteristics, and the emitted color.

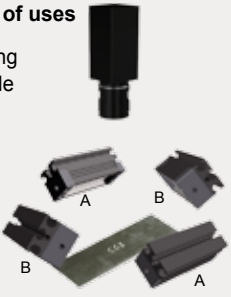
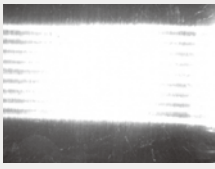
\* Total number of models of the conventional products and high-power type products.

#### Compatible with a wide range of uses

You can freely adjust the illuminating direction and angle for use in a wide range of uses.

Because Bar Lights can freely adjust their illuminating direction and angle to match the workpiece, they can provide the optimal image.

Illuminating image from direction A



Illuminating image from direction B



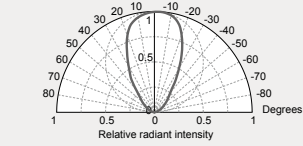
### Bar Lights that use surface-mounted LEDs

These are Bar Lights that use surface-mounted LEDs. We provide the narrow type, which performs convergent illumination for a narrow space, and the wide type (-WD) which illuminates a wide space.

#### Select the directional characteristics of a narrow type or wide type

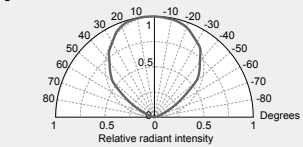
##### Directional characteristics of the Narrow Type (White)

Zoomed-in view of the emitting surface



##### Directional characteristics of the Wide Type (White)

Zoomed-in view of the emitting surface

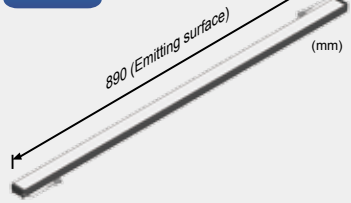


### Custom orders

Please contact your CCS sales representative.

E.g.: Different shape

Format Create a Light Unit with a long size



#### Customizable items

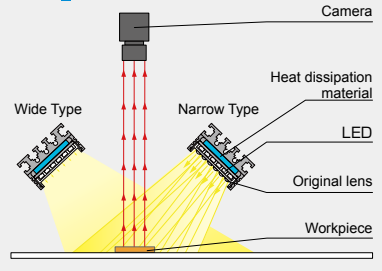
- External/internal diameter
- Wavelength/color
- Increase output
- Cable length
- Illuminating angle
- Format/material
- Connector format
- Installation/mounting

Etc.

### Example configuration

Achieved light with a narrow directionality using the original lens located in front of the LEDs. Illuminates direct light from any angle.

#### LDL2-74X30



LDR2	Direct Lighting
LDR2-LA	Direct Lighting
LDR-LA1	Direct Lighting
SQR	Direct Lighting
SQR-TP	Direct Lighting
HPR2	Direct Lighting
LFR	Direct Lighting
LKR	Direct Lighting
FPR	Direct Lighting
FPQ2	Direct Lighting
<b>LDL2</b>	<b>Direct Lighting</b>
LDLB	Direct Lighting
HLDL2	Direct Lighting
HL	Direct Lighting
TH2 (5 types)	Direct Lighting
TH	Direct Lighting
LFL	Direct Lighting
HPD2	Direct Lighting
LDM2	Direct Lighting
LAV	Direct Lighting
PDM	Direct Lighting
LFX3	Direct Lighting
LFX3-PT	Direct Lighting
LFX2	Direct Lighting
LFV3	Direct Lighting
MSU	Direct Lighting
MFU	Direct Lighting
PF	Direct Lighting
HLDR-IP/IQ/HSL-PCL	Direct Lighting
UV2	Direct Lighting
UV	Direct Lighting
LNSP-UV-FN	Direct Lighting
IR2	Direct Lighting
IU	Direct Lighting
HLV2	Direct Lighting
LV	Direct Lighting
LSP	Direct Lighting
HFS/HFR	Direct Lighting
HLV2-NR	Direct Lighting
HLV2-3M-RGB-3W	Direct Lighting
PFBR	Direct Lighting
PFB2	Direct Lighting
LNLP	Direct Lighting
LNSP2	Direct Lighting
LNSP	Direct Lighting
Coaxial Units	Direct Lighting
LNSP-FN	Direct Lighting
LN/LN-HK	Direct Lighting
LNSD	Direct Lighting
LND2	Direct Lighting
HLND	Direct Lighting
LT	Direct Lighting
LNV/HLND	Direct Lighting
LNDG	Direct Lighting
LNIS	Direct Lighting
LNIS-FN	Direct Lighting
Telecentric Lens	Direct Lighting
Macro Lens	Direct Lighting

We have various materials.

- PDF Drawings
- DXF Drawings
- 3D CAD
- Instruction Guides
- Product Files
- Imaging Samples
- Data Sheets
- Examples of Custom Ordered Products

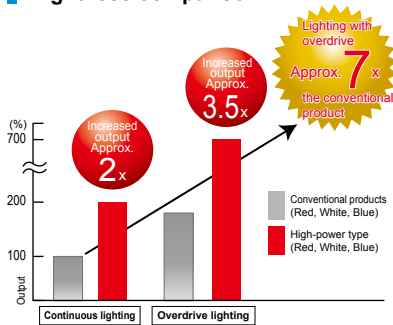
Download here. <http://www.ccs-grp.com/dl/>

## Increased brightness and rich variety of sizes

For detailed information on the overdrive, refer to P.294.

The data included is for reference only. Actual values may vary.

### Brightness comparison



Conventional product

Shutter speed: 1/10,000  
Amount of light: 100% intensityHigh-power type  
Continuous lightingShutter speed: 1/10,000  
Amount of light: 100% intensity Continuous lighting: 100% intensityHigh-power type  
Lighting with overdriveShutter speed: 1/18,000  
Lighting with overdrive: 100% intensity

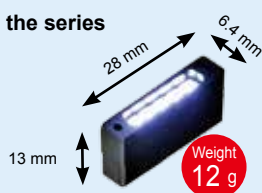
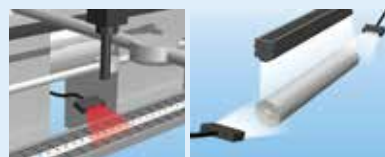
### Standard product lineup

The same applies to Wide Types (End of the model name: -WD).

Conventional product			High-power type		
Model name	LED color	Emitting surface size	Model name	LED color	Emitting surface size
-	-	-	LDL2-19X4RD2/SW2/BL2	Red/White/Blue	19X4 mm
LDL2-33X8RD/SW/BL/GR/IR850	Red/White/Blue/Green/Infrared	33X8 mm	LDL2-33X8RD2/SW2/BL2		33X8 mm
LDL2-41X16RD/SW/BL/GR	Red/White/Blue/Green	41X16 mm	LDL2-41X16RD2/SW2/BL2		41X16 mm
LDL2-80X16RD/SW/BL/GR		80X16 mm	LDL2-80X16RD2/SW2/BL2		80X16 mm
LDL2-119X16RD/SW/BL/GR		119X16 mm	LDL2-119X16RD2/SW2/BL2		119X16 mm
-	-	-	LDL2-158X16RD2/SW2/BL2		158X16 mm
-	-	-	LDL2-26X30RD2/SW2/BL2		26X30 mm
-	-	-	LDL2-50X30RD2/SW2/BL2		50X30 mm
LDL2-74X30RD/SW/BL/GR	Red/White/Blue/Green	74X30 mm	LDL2-74X30RD2/SW2/BL2		74X30 mm
-	-	-	LDL2-98X30RD2/SW2/BL2		98X30 mm
-	-	-	LDL2-122X30RD2/SW2/BL2		122X30 mm
LDL2-146X30RD/SW/BL/GR	Red/White/Blue/Green	146X30 mm	LDL2-146X30RD2/SW2/BL2		146X30 mm
LDL2-218X30RD/SW/BL/GR		218X30 mm	LDL2-218X30RD2/SW2/BL2		218X30 mm
LDL2-266X30RD/SW/BL/GR		266X30 mm	LDL2-266X30RD2/SW2/BL2		266X30 mm

### Shortest Bar Light in the series

#### LDL2-19X4 series

Applications:  
Visual inspection of  
extremely small parts, etc.Use it for installations  
in narrow devices or  
to save space on your  
manufacturing line.Narrow spaces inside  
devicesAs assistance lighting for  
other lights

### Differences between conventional products and high-power types

Changes	Conventional product	High-power type
Peak emitting wavelength	Red 635 nm/Blue 470 nm	Red 634 nm/Blue 467 nm
Correlated color temperature	White 6,600 K	White 7,800 K
Power consumption	Refer to the Lineup table. (P.51 to 56)	
Spectral distribution	Refer to the LED properties. (P.56)	
Directional characteristics	Refer to the LED properties. (P.56)	

### Model name

Conventional product	High-power type
(Example) LDL2-41X16SW	(Example) LDL2-41X16SW2
LDL2-41X16SW-WD	LDL2-41X16SW2-WD

Power consumption values are different between the conventional products and high-power type products. Before use, make sure that the total power consumption of the Light Units is within the output power capacity of the Control Unit. Optional accessories are applicable to the new products as well as to the conventional products of the same size. For details on the optional accessories that are applicable to the Light Units with the newly added size, refer to the lineup tables under "Options."

Direct Lighting  
LDR2  
LDR2-LA  
LDR-LA1  
SQR  
SQR-TPDiffused Lighting  
HPR2  
LFR  
LKR  
FPR  
FPQ2Direct  
LightingLDL2  
LDLB  
HLDL2  
HLTH2 (5 types)  
TH  
LFLDiffused Lighting  
HPD2  
LDM2  
LAV  
PDM  
LFX3  
LFX3-PT  
LFX2  
LFV3Colimated  
Lighting  
MSU  
MFUStrobe  
Lighting  
PFWater-  
proof  
HLDR-IP/  
IQ/HSL-PCLUltraviolet  
Lighting  
UV2  
UV  
LNSP-UV-FNInfrared  
Lighting  
IR2Intensity  
Control  
IUSpot Lighting, Etc.  
HLV2  
LV  
LSP  
HFS/HFR  
HLV2-NR  
HLV2-3M-RGB-3W  
PFBR  
PFB2Convergent Lighting  
LNLP  
LNSP2  
LNSP  
Coaxial Units  
LNSP-FN  
LN/LN-HKDiffused Lighting  
LNSD  
LND2  
HLND  
LT  
LNV/HLDNOblique  
Angled  
Lighting  
LNDG  
LNIS  
LNIS-FNLenses  
Telecentric Lens  
Macro Lens

# LDL2 series



Refer to our website for product details.

CCS LDL2

Search



You can also use your smartphone or cell phone.

For quick access.

## Imaging example : Imaging of damage in sheet metal (hairline finishing)



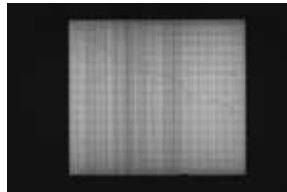
Description	Visual inspection
Workpiece	Aluminum sheet (hairline finishing)
Before the proposal	LED Bar Light
After the proposal	LDL2-74X30RD Proposed the optimal illuminating angle and illuminating direction
Result	Extracts only the damage

Workpiece image



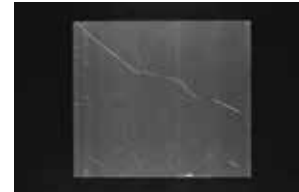
Aluminum sheet (hairline finishing)

LED Bar Light



Due to reflection from the hairline finishing surface, it is difficult to form an image of the damage.

LDL2-74X30RD



Surface reflection is reduced and a clear image of the damage can be made.

## Imaging example : Imaging the appearance of confectionery packaging

Workpiece image



Confectionery packaging

LED Ring Light



Due to reflection from the surface, it is difficult to form an image of the appearance.

LDL2-119X16SW



Surface reflection is removed and a clear image of the appearance can be made.

## Imaging example : Imaging of engraved characters on a plastic surface

Workpiece image



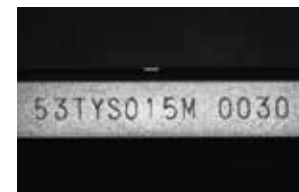
Digital video cassette

LED Ring Light + Diffusion plate



It is difficult to observe the engraved characters due to uneven illumination.

LDL2-80X16RD2 (Red) + Diffusion plate



When you attach the diffusion plate to the Bar Light and illuminate the workpiece, the engraved characters are evenly and brightly captured.

## Imaging example : Imaging the appearance of connector pins

Workpiece image



Connector

LDL2-74X30SW2-WD



Illumination from the front of the workpiece allows you to observe the surface state of the connector.

LDL2-74X30SW2-WD + Diffusion plate



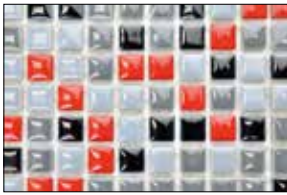
Illumination using a diffusion plate from behind the workpiece allows you to observe the appearance of the connector.

- Direct Lighting
- LDR2
- LDR2-LA
- LDR-LA1
- SQR
- SQR-TP
- HPR2
- LFR
- LKR
- FPR
- FPQ2
- LDL2
- LDLB
- HLDL2
- HL
- Diffused Lighting
- TH2 (5 types)
- TH
- LFL
- HPD2
- LDM2
- LAV
- PDM
- LFX3
- LFX3-PT
- LFX2
- LFV3
- MSU
- MFU
- Collimated Lighting
- Strobe Lighting
- Water-proof
- UV2
- UV
- UV-FN
- UV-FN
- Infrared Lighting
- IR2
- Intensity Control
- IU
- HLV2
- LV
- LSP
- HFS/HFR
- HLV2-NR
- HLV2-3M-RGB-3W
- PFB2
- PFB2
- Spot Lighting, Etc.
- LNL2
- LNSP2
- LNSP
- Coaxial Units
- LNSP-FN
- LN/LN-HK
- LNSD
- LND2
- HLND
- LT
- LNV/HLND
- LNDG
- Oblique Angled Lighting
- LNIS
- LNIS-FN
- Telecentric Lens
- Macro Lens

## Imaging example : Imaging the surface and appearance of tiles

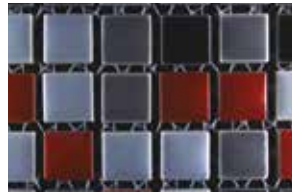


Workpiece image



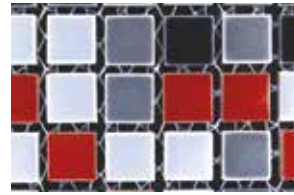
Tiles

LDL2-119X16SW2 (double use)



It is difficult to observe the surface and appearance of the tiles with a double use of the Bar Lights due to uneven illumination.

LDL2-119X16SW2 (quadruple use) + bracket



The Bar Lights which are mounted on the four sides of the bracket illuminate the surface and appearance of the tiles, so that they are captured brightly and evenly.

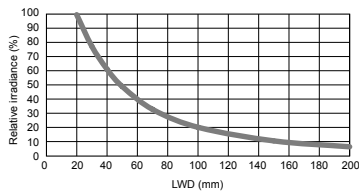
## Data: Relative irradiance graph/Uniformity (Representative example)

The data included is for reference only. Actual values may vary.

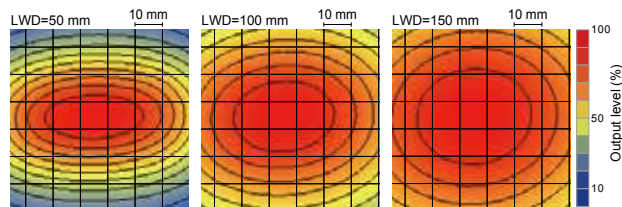
### LDL2-74X30SW (Narrow type)

#### Relative irradiance graph\*<sup>1</sup> (LWD Characteristics)\*<sup>2</sup>

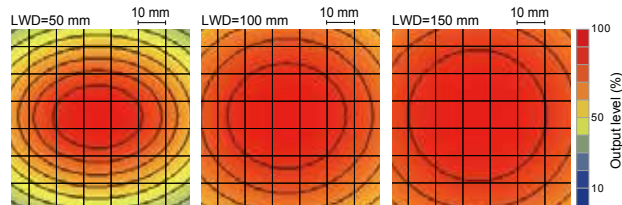
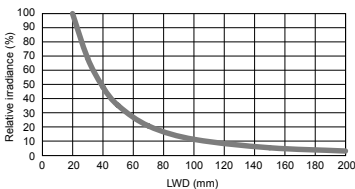
\*1: Irradiance on the optical axis  
\*2: Illuminating distance from the Light Unit to the workpiece



#### Uniformity (Relative irradiance)



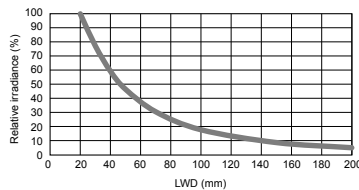
### LDL2-74X30SW-WD (Wide type)



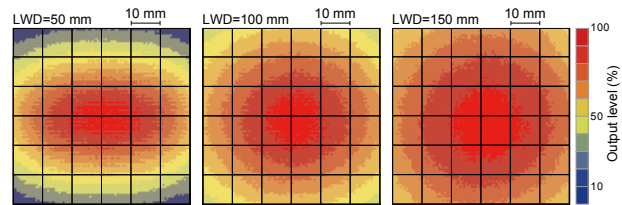
### LDL2-74X30SW2 (Narrow type)

#### Relative irradiance graph\*<sup>1</sup> (LWD Characteristics)\*<sup>2</sup>

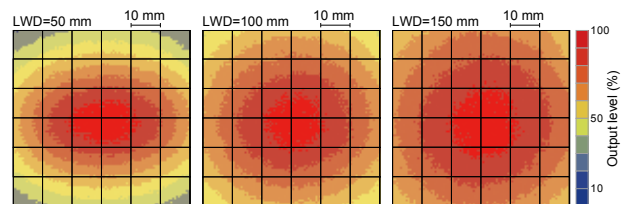
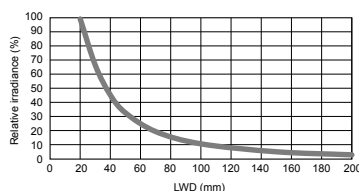
\*1: Irradiance on the optical axis  
\*2: Illuminating distance from the Light Unit to the workpiece



#### Uniformity (Relative irradiance)



### LDL2-74X30SW2-WD (Wide type)



Conventional products

New products

Direct Lighting	LDR2
	LDR2-LA
	LDR-LA1
	SQR
	SQR-TP
Diffused Lighting	HPR2
	LFR
	LKR
	FPR
	FPQ2
Direct Lighting	LDL2
	LDLB
	HLDL2
	HL
	TH2 (5 types)
	TH
	LFL
Diffused Lighting	HPD2
	LDM2
	LAV
	PDM
	LFX3
	LFX3-PT
	LFX2
	LFV3
Collimated Lighting	MSU
	MFU
Strobe Lighting	PF
Water-proof	HLDR-IP/ IQ/HSL-PCL
Ultraviolet Lighting	UV2
	UV
	LNSP-UV-FN
Infrared Lighting	IR2
Intensity Control	IU
Spot Lighting, Etc.	HLV2
	LV
	LSP
	HFS/HFR
	HLV2-NR
	HLV2-3M-RGB-3W
	PFBR
	PFB2
Convergent Lighting	LNLP
	LNSP2
	LNSP
	Coaxial Units
	LNSP-FN
	LN/LN-HK
Diffused Lighting	LNSD
	LND2
	HLND
	LT
	LNV/HLDN
Oblique Angled Lighting	LNDG
	LNIS
	LNIS-FN
Lenses	Telecentric Lens
	Macro Lens



# LDL2 series



Refer to our website for product details.

CCS LDL2 Search



You can also use your smartphone or cell phone.

For quick access.

## Lineup (Standard products · Conventional products)

End of the model name: -WD: Wide type

Model name	LED color	Emitting surface size	Power consumption	Peak wavelength/ correlated color temperature	Options	Extension cables	Recommended Control Units	Weight
Emitting width: 8 mm	LDL2-33X8RD*1	Red	24 V / 1.3 W	635 nm	Diffusion plate Polarizing plate Bracket		PD3 CC-ST-1024 PSB POD*3*4	20 g
	LDL2-33X8SW*1	White		6,600 K				
	LDL2-33X8BL*1	Blue	24 V / 0.8 W	470 nm				
	LDL2-33X8GR*1	Green		525 nm				
	LDL2-33X8IR850*1*2	Infrared	24 V / 1.3 W	850 nm				
Emitting width: 16 mm	LDL2-41X16RD(-WD)	Red	24 V / 1.9 W	635 nm			PD3 CC-ST-1024 PSB POD*3	50 g
	LDL2-41X16SW(-WD)	White		6,600 K				
	LDL2-41X16BL(-WD)	Blue		470 nm				
	LDL2-41X16GR(-WD)	Green		525 nm				
Emitting width: 16 mm	LDL2-80X16RD(-WD)	Red	24 V / 3.8 W	635 nm	Diffusion plate Polarizing plate Protective plate Bracket	FCB*5 Straight Cable FCB-W 2-branch Cable FCB-F 4-branch Cable FRCB Robot Cable	PD3 CC-ST-1024 PSB POD*3	75 g
	LDL2-80X16SW(-WD)	White		6,600 K				
	LDL2-80X16BL(-WD)	Blue		470 nm				
	LDL2-80X16GR(-WD)	Green		525 nm				
	LDL2-119X16RD(-WD)	Red	24 V / 5.7 W	635 nm				
	LDL2-119X16SW(-WD)	White		6,600 K				
	LDL2-119X16BL(-WD)	Blue		470 nm				
	LDL2-119X16GR(-WD)	Green		525 nm				
Emitting width: 30 mm	LDL2-74X30RD(-WD)	Red	24 V / 5.7 W	635 nm			PD3 CC-ST-1024 PSB POD*3	100 g
	LDL2-74X30SW(-WD)	White		6,600 K				
	LDL2-74X30BL(-WD)	Blue		470 nm				
	LDL2-74X30GR(-WD)	Green		525 nm				
Emitting width: 30 mm	LDL2-146X30RD(-WD)	Red	24 V / 12 W	635 nm	Diffusion plate Polarizing plate Protective plate Bracket	FCB*5 Straight Cable FCB-W 2-branch Cable FCB-F 4-branch Cable FRCB Robot Cable	PD3 CC-ST-1024 PSB POD*3	170 g
	LDL2-146X30SW(-WD)	White		6,600 K				
	LDL2-146X30BL(-WD)	Blue		470 nm				
	LDL2-146X30GR(-WD)	Green		525 nm				
	LDL2-218X30RD(-WD)	Red	24 V / 18 W	635 nm				
	LDL2-218X30SW(-WD)	White		6,600 K				
	LDL2-218X30BL(-WD)	Blue		470 nm				
	LDL2-218X30GR(-WD)	Green		525 nm				
Emitting width: 30 mm	LDL2-266X30RD(-WD)	Red	24 V / 21 W	635 nm			PD3 CC-ST-1024 PSB POD*3	240 g
	LDL2-266X30SW(-WD)	White		6,600 K				
	LDL2-266X30BL(-WD)	Blue		470 nm				
	LDL2-266X30GR(-WD)	Green		525 nm				

Extension Cables ▶ P.280

Control Unit Selection Guide ▶ P.229

List of Control Unit Specifications ▶ P.231

\*1 All LEDs of the LDL2-33X8 have wide type directional characteristics.

\*2 Please inquire if you want to use in combination with a Strobe Control Unit (overdrive type).

\*3 For information on the combination of Light Units and POD-series Control Unit, please refer to our website. <http://www.ccs-grp.com/lnk/qr/pod>

We have various materials.

- PDF Drawings
- DXF Drawings
- 3D CAD
- Instruction Guides
- Product Filers
- Imaging Samples
- Data Sheets
- Examples of Custom Ordered Products

Download here. <http://www.ccs-grp.com/dl/>

Direct Lighting	LDR2
	LDR2-LA
	LDR-LA1
	SQR
	SQR-TP
Diffused Lighting	HPR2
	LFR
	LKR
	FPR
	FPQ2
Direct Lighting	<b>LDL2</b>
	LDLB
	HLDL2
	HL
	TH2 (5 types)
	TH
	LFL
Diffused Lighting	HPD2
	LDM2
	LAV
	PDM
	LFX3
	LFX3-PT
	LFX2
	LFV3
Cathode Lighting	MSU
Stroke Lighting	MFU
	PF
Water-proof	HLDR-IP/ IQ/HSL-PCL
Ultraviolet Lighting	UV2
	UV
	LNSP-UV-FN
Infrared Lighting	IR2
Intensity Control	IU
Spot Lighting, Etc.	HLV2
	LV
	LSP
	HFS/HFR
	HLV2-NR
	HLV2-3M-RGB-3W
	PFBR
	PFB2
Convergent Lighting	LNLP
	LNSP2
	LNSP
	Coaxial Units
	LNSP-FN
	LN/LN-HK
Diffused Lighting	LNSD
	LND2
	HLND
	LT
	LNV/HLDN
Oblique Angled Lighting	LNDG
	LNIS
	LNIS-FN
Lenses	Telecentric Lens
	Macro Lens

## Lineup (Standard products · High-power type)

End of the model name: -WD: Wide type

	Model name	LED color	Emitting surface size	Power consumption	Peak wavelength/ correlated color temperature	Options	Extension cables	Recommended Control Units	Weight				
E.W.: 4 mm	LDL2-19X4RD2* <sup>1</sup>	Red	19×4 mm	24 V / 1.3 W	634 nm	Diffusion plate		PD3    CC-ST-1024 PSB    POD* <sup>2</sup>	12 g				
	LDL2-19X4SW2* <sup>1</sup>	White			7,800 K	Polarizing plate							
	LDL2-19X4BL2* <sup>1</sup>	Blue		467 nm	Bracket*	* We accept custom orders.							
E.W.: 8 mm	LDL2-33X8RD2* <sup>1</sup>	Red	33×8 mm	24 V / 2.6 W	634 nm	Diffusion plate		PD3    CC-ST-1024 PSB    POD* <sup>2</sup>	20 g				
	LDL2-33X8SW2* <sup>1</sup>	White		24 V / 2.1 W	7,800 K	Polarizing plate							
	LDL2-33X8BL2* <sup>1</sup>	Blue		24 V / 1.5 W	467 nm	Bracket							
Emitting width: 16 mm	LDL2-41X16RD2(-WD)	Red	41×16 mm	24 V / 3.8 W	634 nm	Diffusion plate Polarizing plate Protective plate Bracket	FCB* <sup>3</sup> Straight Cable  FCB-W 2-branch Cable  FCB-F 4-branch Cable  FRCB Robot Cable	PD3    CC-ST-1024 PSB    POD* <sup>2</sup>	50 g				
	LDL2-41X16SW2(-WD)	White			7,800 K								
	LDL2-41X16BL2(-WD)	Blue			467 nm								
	LDL2-80X16RD2(-WD)	Red	80×16 mm	24 V / 7.6 W	634 nm								
	LDL2-80X16SW2(-WD)	White			7,800 K								
	LDL2-80X16BL2(-WD)	Blue			467 nm								
	LDL2-119X16RD2(-WD)	Red	119×16 mm	24 V / 12 W	634 nm								
	LDL2-119X16SW2(-WD)	White			7,800 K								
	LDL2-119X16BL2(-WD)	Blue			467 nm								
	LDL2-158X16RD2(-WD)	Red	158×16 mm	24 V / 16 W	634 nm								
	LDL2-158X16SW2(-WD)	White			7,800 K								
	LDL2-158X16BL2(-WD)	Blue			467 nm								
	Emitting width: 30 mm	LDL2-26X30RD2(-WD)	Red	26×30 mm	24 V / 3.8 W				634 nm	Diffusion plate Polarizing plate Protective plate Bracket*	FCB* <sup>3</sup> Straight Cable  FCB-W 2-branch Cable  FCB-F 4-branch Cable  FRCB Robot Cable	PD3    CC-ST-1024 PSB    POD* <sup>2</sup>	55 g
		LDL2-26X30SW2(-WD)	White						7,800 K				
		LDL2-26X30BL2(-WD)	Blue						467 nm				
LDL2-50X30RD2(-WD)		Red	50×30 mm	24 V / 7.6 W	634 nm								
LDL2-50X30SW2(-WD)		White			7,800 K								
LDL2-50X30BL2(-WD)		Blue			467 nm								
LDL2-74X30RD2(-WD)		Red	74×30 mm	24 V / 12 W	634 nm								
LDL2-74X30SW2(-WD)		White			7,800 K								
LDL2-74X30BL2(-WD)		Blue			467 nm								
LDL2-98X30RD2(-WD)		Red	98×30 mm	24 V / 16 W	634 nm								
LDL2-98X30SW2(-WD)		White			7,800 K								
LDL2-98X30BL2(-WD)		Blue			467 nm								
LDL2-122X30RD2(-WD)		Red	122×30 mm	24 V / 19 W	634 nm								
LDL2-122X30SW2(-WD)		White			7,800 K								
LDL2-122X30BL2(-WD)		Blue			467 nm								
LDL2-146X30RD2(-WD)	Red	146×30 mm	24 V / 23 W	634 nm									
LDL2-146X30SW2(-WD)	White			7,800 K									
LDL2-146X30BL2(-WD)	Blue			467 nm									
LDL2-218X30RD2(-WD)	Red	218×30 mm	24 V / 35 W	634 nm									
LDL2-218X30SW2(-WD)	White			7,800 K									
LDL2-218X30BL2(-WD)	Blue			467 nm									
LDL2-266X30RD2(-WD)	Red	266×30 mm	24 V / 42 W	634 nm									
LDL2-266X30SW2(-WD)	White			7,800 K									
LDL2-266X30BL2(-WD)	Blue			467 nm									

Extension Cables ▶ P.280

Control Unit Selection Guide ▶ P.229

List of Control Unit Specifications ▶ P.231

\*1 All LEDs of the LDL2-19X4 and LDL2-33X8 have wide type directional characteristics.

\*2 For information on the combination of Light Units and POD-series Control Unit, please refer to our website. <http://www.ccs-grp.com/lnk/qr/pod>You can inquire using  
our website.Requests for  
Light Unit  
SelectionRequests for  
Loan  
ProductsRequests for  
EstimatesRequests for  
a CatalogProduct  
InquiriesOther  
InquiriesInquire on our website here.  
<http://www.ccs-grp.com/contact/>

# LDL2 series



Refer to our website for product details.

CCS LDL2

Search



You can also use your smartphone or cell phone.

For quick access.

## Lineup (Special orders · Conventional products)

End of the model name: -WD: Wide type

- LDR2
- LDR2-LA
- LDR-LA1
- SQR
- SQR-TP
- HPR2
- LFR
- LKR
- FPR
- FPQ2
- LDL2**
- LDLB
- HLDL2
- HL
- TH2 (5 types)
- TH
- LFL
- HPD2
- LDM2
- LAV
- PDM
- LFX3
- LFX3-PT
- LFX2
- LFV3
- MSU
- MFU
- PF
- HLDR-IP/IO/HSL-PCL
- UV2
- UV
- LNSP-UV-FN
- IR2
- IU
- HLV2
- LV
- LSP
- HFS/HFR
- HLV2-NR
- HLV2-3M-RGB-3W
- PFBR
- PFB2
- NLNP
- LNSP2
- LNSP
- Coaxial Units
- LNSP-FN
- LN/LN-HK
- LNSD
- LND2
- HLND
- LT
- LNV/HLND
- LNDG
- LNIS
- LNIS-FN
- Telecentric Lens
- Macro Lens

Model name	LED color	Emitting surface size	Power consumption	Peak wavelength/ correlated color temperature	Options	Extension cables	Recommended Control Units	Weight
LDL2-158 X16RD(-WD)	Red	158×16 mm	24 V / 7.6 W	635 nm	Please inquire for more information.		<input type="checkbox"/> PD3 <input type="checkbox"/> CC-ST-1024 <input type="checkbox"/> PSB <input type="checkbox"/> POD* <sup>1</sup>	120 g
LDL2-158 X16SW(-WD)	White			6,600 K				
LDL2-158 X16BL(-WD)	Blue			470 nm				
LDL2-158 X16GR(-WD)	Green	525 nm						
LDL2-197X16RD(-WD)	Red	197×16 mm	24 V / 9.5 W	635 nm				
LDL2-197X16SW(-WD)	White			6,600 K				
LDL2-197X16BL(-WD)	Blue			470 nm				
LDL2-197X16GR(-WD)	Green	525 nm						
LDL2-236X16RD(-WD)	Red	236×16 mm	24 V / 12 W	635 nm				
LDL2-236X16SW(-WD)	White			6,600 K				
LDL2-236X16BL(-WD)	Blue			470 nm				
LDL2-236X16GR(-WD)	Green	525 nm						
LDL2-275X16RD(-WD)	Red	275×16 mm	24 V / 14 W	635 nm				
LDL2-275X16SW(-WD)	White			6,600 K				
LDL2-275X16BL(-WD)	Blue			470 nm				
LDL2-275X16GR(-WD)	Green	525 nm						
LDL2-314X16RD(-WD)	Red	314×16 mm	24 V / 16 W	635 nm				
LDL2-314X16SW(-WD)	White			6,600 K				
LDL2-314X16BL(-WD)	Blue			470 nm				
LDL2-314X16GR(-WD)	Green	525 nm						
LDL2-353X16RD(-WD)	Red	353×16 mm	24 V / 18 W	635 nm				
LDL2-353X16SW(-WD)	White			6,600 K				
LDL2-353X16BL(-WD)	Blue			470 nm				
LDL2-353X16GR(-WD)	Green	525 nm						
LDL2-392X16RD(-WD)	Red	392×16 mm	24 V / 19 W	635 nm				
LDL2-392X16SW(-WD)	White			6,600 K				
LDL2-392X16BL(-WD)	Blue			470 nm				
LDL2-392X16GR(-WD)	Green	525 nm						
LDL2-431X16RD(-WD)	Red	431×16 mm	24 V / 21 W	635 nm				
LDL2-431X16SW(-WD)	White			6,600 K				
LDL2-431X16BL(-WD)	Blue			470 nm				
LDL2-431X16GR(-WD)	Green	525 nm						
LDL2-470X16RD(-WD)	Red	470×16 mm	24 V / 23 W	635 nm				
LDL2-470X16SW(-WD)	White			6,600 K				
LDL2-470X16BL(-WD)	Blue			470 nm				
LDL2-470X16GR(-WD)	Green	525 nm						
LDL2-509X16RD(-WD)	Red	509×16 mm	24 V / 25 W	635 nm				
LDL2-509X16SW(-WD)	White			6,600 K				
LDL2-509X16BL(-WD)	Blue			470 nm				
LDL2-509X16GR(-WD)	Green	525 nm						
LDL2-26X30RD(-WD)	Red	26×30 mm	24 V / 1.9 W	635 nm				
LDL2-26X30SW(-WD)	White			6,600 K				
LDL2-26X30BL(-WD)	Blue			470 nm				
LDL2-26X30GR(-WD)	Green	525 nm						
LDL2-50X30RD(-WD)	Red	50×30 mm	24 V / 3.8 W	635 nm				
LDL2-50X30SW(-WD)	White			6,600 K				
LDL2-50X30BL(-WD)	Blue			470 nm				
LDL2-50X30GR(-WD)	Green	525 nm						
LDL2-98X30RD(-WD)	Red	98×30 mm	24 V / 7.6 W	635 nm				
LDL2-98X30SW(-WD)	White			6,600 K				
LDL2-98X30BL(-WD)	Blue			470 nm				
LDL2-98X30GR(-WD)	Green	525 nm						
LDL2-122X30RD(-WD)	Red	122×30 mm	24 V / 9.5 W	635 nm				
LDL2-122X30SW(-WD)	White			6,600 K				
LDL2-122X30BL(-WD)	Blue			470 nm				
LDL2-122X30GR(-WD)	Green	525 nm						

- FCB\*<sup>2</sup> Straight Cable
- FCB-W 2-branch Cable
- FCB-F 4-branch Cable
- FRCB Robot Cable

\*<sup>2</sup> The cables with a model name that ends with "-ME7" or "-EL2" are not included.

Extension Cables ▶ P.280    Control Unit Selection Guide ▶ P.229    List of Control Unit Specifications ▶ P.231

\*<sup>1</sup> For information on the combination of Light Units and POD-series Control Unit, please refer to our website. <http://www.ccs-grp.com/lnk/qr/pond>

We have various materials.

- PDF Drawings
- DXF Drawings
- 3D CAD
- Instruction Guides
- Product Filers
- Imaging Samples
- Data Sheets
- Examples of Custom Ordered Products

Download here. <http://www.ccs-grp.com/dl/>

## Lineup (Special orders · Conventional products)

End of the model name: -WD: Wide type

Model name	LED color	Emitting surface size	Power consumption	Peak wavelength/ correlated color temperature	Options	Extension cables	Recommended Control Units	Weight
LDL2-170X30RD(-WD)	Red	170×30 mm	24 V / 14 W	635 nm	Please inquire for more information.			200 g
LDL2-170X30SW(-WD)	White			6,600 K				
LDL2-170X30BL(-WD)	Blue			470 nm				
LDL2-170X30GR(-WD)	Green			525 nm				
LDL2-194X30RD(-WD)	Red	194×30 mm	24 V / 16 W	635 nm				
LDL2-194X30SW(-WD)	White			6,600 K				
LDL2-194X30BL(-WD)	Blue			470 nm				
LDL2-194X30GR(-WD)	Green			525 nm				
LDL2-242X30RD(-WD)	Red	242×30 mm	24 V / 19 W	635 nm				
LDL2-242X30SW(-WD)	White			6,600 K				
LDL2-242X30BL(-WD)	Blue			470 nm				
LDL2-242X30GR(-WD)	Green			525 nm				
LDL2-290X30RD(-WD)	Red	290×30 mm	24 V / 23 W	635 nm				
LDL2-290X30SW(-WD)	White			6,600 K				
LDL2-290X30BL(-WD)	Blue			470 nm				
LDL2-290X30GR(-WD)	Green			525 nm				
LDL2-314X30RD(-WD)	Red	314×30 mm	24 V / 25 W	635 nm				
LDL2-314X30SW(-WD)	White			6,600 K				
LDL2-314X30BL(-WD)	Blue			470 nm				
LDL2-314X30GR(-WD)	Green			525 nm				
LDL2-338X30RD(-WD)	Red	338×30 mm	24 V / 27 W	635 nm				
LDL2-338X30SW(-WD)	White			6,600 K				
LDL2-338X30BL(-WD)	Blue			470 nm				
LDL2-338X30GR(-WD)	Green			525 nm				
LDL2-362X30RD(-WD)	Red	362×30 mm	24 V / 29 W	635 nm				
LDL2-362X30SW(-WD)	White			6,600 K				
LDL2-362X30BL(-WD)	Blue			470 nm				
LDL2-362X30GR(-WD)	Green			525 nm				
LDL2-386X30RD(-WD)	Red	386×30 mm	24 V / 31 W	635 nm				
LDL2-386X30SW(-WD)	White			6,600 K				
LDL2-386X30BL(-WD)	Blue			470 nm				
LDL2-386X30GR(-WD)	Green			525 nm				
LDL2-410X30RD(-WD)	Red	410×30 mm	24 V / 33 W	635 nm				
LDL2-410X30SW(-WD)	White			6,600 K				
LDL2-410X30BL(-WD)	Blue			470 nm				
LDL2-410X30GR(-WD)	Green			525 nm				
LDL2-434X30RD(-WD)	Red	434×30 mm	24 V / 35 W	635 nm				
LDL2-434X30SW(-WD)	White			6,600 K				
LDL2-434X30BL(-WD)	Blue			470 nm				
LDL2-434X30GR(-WD)	Green			525 nm				
LDL2-458X30RD(-WD)	Red	458×30 mm	24 V / 37 W	635 nm				
LDL2-458X30SW(-WD)	White			6,600 K				
LDL2-458X30BL(-WD)	Blue			470 nm				
LDL2-458X30GR(-WD)	Green			525 nm				
LDL2-482X30RD(-WD)	Red	482×30 mm	24 V / 38 W	635 nm				
LDL2-482X30SW(-WD)	White			6,600 K				
LDL2-482X30BL(-WD)	Blue			470 nm				
LDL2-482X30GR(-WD)	Green			525 nm				
LDL2-506X30RD(-WD)	Red	506×30 mm	24 V / 40 W	635 nm				
LDL2-506X30SW(-WD)	White			6,600 K				
LDL2-506X30BL(-WD)	Blue			470 nm				
LDL2-506X30GR(-WD)	Green			525 nm				

Emitting width: 30 mm

Extension Cables ▶ P.280

Control Unit Selection Guide ▶ P.229

List of Control Unit Specifications ▶ P.231

\*1 For information on the combination of Light Units and POD-series Control Unit, please refer to our website. <http://www.ccs-grp.com/lnk/q/r/rod>You can inquire using  
our website.Requests for  
Light Unit  
SelectionRequests for  
Loan  
ProductsRequests for  
EstimatesRequests for  
a CatalogProduct  
InquiriesOther  
InquiriesInquire on our website here.  
<http://www.ccs-grp.com/contact/>

Direct Lighting	LDR2
	LDR2-LA
	LDR-LA1
	SQR
Diffused Lighting	SQR-TP
	HPR2
	LFR
Direct Lighting	LKR
	FPR
	FPQ2
	LDL2
Diffused Lighting	LDLB
	HLDL2
	HL
	TH2 (5 types)
Diffused Lighting	TH
	LFL
	HPD2
	LDM2
	LAV
	PDM
	LFX3
Collimated Lighting	LFX3-PT
	LFX2
	LFV3
Strobe Lighting	MSU
	MFU
Water-proof Lighting	PF
	HLDR-IP/ IQ/HSL-PCL
Ultraviolet Lighting	UV2
	UV
	LNSP-UV-FN
Infrared Lighting	IR2
	IU
Intensity Control	HLV2
	LV
	LSP
	HFS/HFR
	HLV2-NR
Spot Lighting, Etc.	HLV2-3M-RGB-3W
	PFBR
	PFB2
Convergent Lighting	NLNP
	LNSP2
	LNSP
	Coaxial Units
Diffused Lighting	LNSP-FN
	LN/LN-HK
	LNSD
Oblique Angled Lighting	LND2
	HLND
	LT
Lenses	LNV/HLDN
	LNDG
Lenses	LNIS
	LNIS-FN
Lenses	Telecentric Lens
	Macro Lens



LDR2	Direct Lighting
LDR2-LA	
LDR-LA1	
SQR	
SQR-TP	Diffused Lighting
HPR2	
LFR	
LKR	
FPR	Direct Lighting
FPQ2	
<b>LDL2</b>	
LDLB	
HLDL2	Diffused Lighting
HL	
TH2 (5 types)	
TH	
LFL	Diffused Lighting
HPD2	
LDM2	
LAV	
PDM	Collimated Lighting
LFX3	
LFX3-PT	
LFX2	
LFV3	Strobe Lighting
MSU	
MFU	
PF	
HLDR-IP/ IQ/HSL-PCL	Water-proof
UV2	
UV	
LNSP-UV-FN	
IR2	Infrared Lighting
IU	
HLV2	
LV	
LSP	Spot Lighting, Etc.
HFS/HFR	
HLV2-NR	
HLV2-3M-RGB-3W	
PFBR	Convergent Lighting
PFB2	
LNSP	
LNSP2	
LNSP	Coaxial Units
LNSP-FN	
LN/LN-HK	
LNSD	
LND2	Diffused Lighting
HLND	
LT	
LNV/HLND	
LNDG	Oblique Angled Lighting
LNIS	
LNIS-FN	
Telecentric Lens	
Macro Lens	

# LDL2 series



Refer to our website for product details.

CCS LDL2

Search



You can also use your smartphone or cell phone.

For quick access.

## Lineup (Special orders · High-power type)

End of the model name: -WD: Wide type

Model name	LED color	Emitting surface size	Power consumption	Peak wavelength/ correlated color temperature	Options	Extension cables	Recommended Control Units	Weight
LDL2-197X16RD2(-WD)	Red	197×16 mm	24 V / 19 W	634 nm	Please inquire for more information.		<input type="checkbox"/> PD3 <input type="checkbox"/> PSB <input type="checkbox"/> POD*1	145 g
LDL2-197X16SW2(-WD)	White			7,800 K				
LDL2-197X16BL2(-WD)	Blue			467 nm				
LDL2-236X16RD2(-WD)	Red	236×16 mm	24 V / 23 W	634 nm				
LDL2-236X16SW2(-WD)	White			7,800 K				
LDL2-236X16BL2(-WD)	Blue			467 nm				
LDL2-275X16RD2(-WD)	Red	275×16 mm	24 V / 27 W	634 nm				
LDL2-275X16SW2(-WD)	White			7,800 K				
LDL2-275X16BL2(-WD)	Blue			467 nm				
LDL2-314X16RD2(-WD)	Red	314×16 mm	24 V / 31 W	634 nm				
LDL2-314X16SW2(-WD)	White			7,800 K				
LDL2-314X16BL2(-WD)	Blue			467 nm				
LDL2-353X16RD2(-WD)	Red	353×16 mm	24 V / 35 W	634 nm				
LDL2-353X16SW2(-WD)	White			7,800 K				
LDL2-353X16BL2(-WD)	Blue			467 nm				
LDL2-392X16RD2(-WD)	Red	392×16 mm	24 V / 38 W	634 nm				
LDL2-392X16SW2(-WD)	White			7,800 K				
LDL2-392X16BL2(-WD)	Blue			467 nm				
LDL2-431X16RD2(-WD)	Red	431×16 mm	24 V / 42 W	634 nm				
LDL2-431X16SW2(-WD)	White			7,800 K				
LDL2-431X16BL2(-WD)	Blue			467 nm				
LDL2-470X16RD2(-WD)	Red	470×16 mm	24 V / 46 W	634 nm				
LDL2-470X16SW2(-WD)	White			7,800 K				
LDL2-470X16BL2(-WD)	Blue			467 nm				
LDL2-509X16RD2(-WD)	Red	509×16 mm	24 V / 50 W	634 nm				
LDL2-509X16SW2(-WD)	White			7,800 K				
LDL2-509X16BL2(-WD)	Blue			467 nm				
LDL2-170X30RD2(-WD)	Red	170×30 mm	24 V / 27 W	634 nm				
LDL2-170X30SW2(-WD)	White			7,800 K				
LDL2-170X30BL2(-WD)	Blue			467 nm				
LDL2-194X30RD2(-WD)	Red	194×30 mm	24 V / 31 W	634 nm				
LDL2-194X30SW2(-WD)	White			7,800 K				
LDL2-194X30BL2(-WD)	Blue			467 nm				
LDL2-242X30RD2(-WD)	Red	242×30 mm	24 V / 38 W	634 nm				
LDL2-242X30SW2(-WD)	White			7,800 K				
LDL2-242X30BL2(-WD)	Blue			467 nm				
LDL2-290X30RD2(-WD)	Red	290×30 mm	24 V / 46 W	634 nm				
LDL2-290X30SW2(-WD)	White			7,800 K				
LDL2-290X30BL2(-WD)	Blue			467 nm				
LDL2-314X30RD2(-WD)	Red	314×30 mm	24 V / 50 W	634 nm				
LDL2-314X30SW2(-WD)	White			7,800 K				
LDL2-314X30BL2(-WD)	Blue			467 nm				

Please inquire for more information.

- FCB\*2 Straight Cable
- FCB-W 2-branch Cable
- FCB-F 4-branch Cable
- FRCB Robot Cable

\*2 The cables with a model name that ends with "-ME7" or "-EL2" are not included.

Extension Cables ▶ P.280    Control Unit Selection Guide ▶ P.229    List of Control Unit Specifications ▶ P.231

\*1 For information on the combination of Light Units and POD-series Control Unit, please refer to our website. <http://www.ccs-grp.com/lnk/qr/pod>

## Lineup (Special orders · High-power type)

End of the model name: -WD: Wide type

Model name	LED color	Emitting surface size	Power consumption	Peak wavelength/ correlated color temperature	Options	Extension cables	Recommended Control Units	Weight
LDL2-338X30RD2(-WD)	Red	338×30 mm	24 V / 53 W	634 nm	Please inquire for more information.	FCB <sup>※3</sup> Straight Cable FCB-W 2-branch Cable FCB-F 4-branch Cable FRCB Robot Cable  *3 The cables with a model name that ends with "ME7" or "EL2" are not included.  FCB-EL2 Straight Cable FCB-W-EL2 2-branch Cable	PD3    POD <sup>※2</sup>	375 g
LDL2-338X30SW2(-WD)	White			7,800 K				
LDL2-338X30BL2(-WD)	Blue			467 nm				
LDL2-362X30RD2(-WD)	Red	362×30 mm	24 V / 57 W	634 nm				
LDL2-362X30SW2(-WD)	White			7,800 K				
LDL2-362X30BL2(-WD)	Blue			467 nm				
LDL2-386X30RD2(-WD) <sup>*1</sup>	Red	386×30 mm	24 V / 61 W	634 nm				
LDL2-386X30SW2(-WD) <sup>*1</sup>	White			7,800 K				
LDL2-386X30BL2(-WD) <sup>*1</sup>	Blue			467 nm				
LDL2-410X30RD2(-WD) <sup>*1</sup>	Red	410×30 mm	24 V / 65 W	634 nm				
LDL2-410X30SW2(-WD) <sup>*1</sup>	White			7,800 K				
LDL2-410X30BL2(-WD) <sup>*1</sup>	Blue			467 nm				
LDL2-434X30RD2(-WD) <sup>*1</sup>	Red	434×30 mm	24 V / 69 W	634 nm				
LDL2-434X30SW2(-WD) <sup>*1</sup>	White			7,800 K				
LDL2-434X30BL2(-WD) <sup>*1</sup>	Blue			467 nm				
LDL2-458X30RD2(-WD) <sup>*1</sup>	Red	458×30 mm	24 V / 72 W	634 nm				
LDL2-458X30SW2(-WD) <sup>*1</sup>	White			7,800 K				
LDL2-458X30BL2(-WD) <sup>*1</sup>	Blue			467 nm				
LDL2-482X30RD2(-WD) <sup>*1</sup>	Red	482×30 mm	24 V / 76 W	634 nm				
LDL2-482X30SW2(-WD) <sup>*1</sup>	White			7,800 K				
LDL2-482X30BL2(-WD) <sup>*1</sup>	Blue			467 nm				
LDL2-506X30RD2(-WD) <sup>*1</sup>	Red	506×30 mm	24 V / 80 W	634 nm				
LDL2-506X30SW2(-WD) <sup>*1</sup>	White			7,800 K				
LDL2-506X30BL2(-WD) <sup>*1</sup>	Blue			467 nm				

Emitting width: 30 mm

Extension Cables ▶ P.280

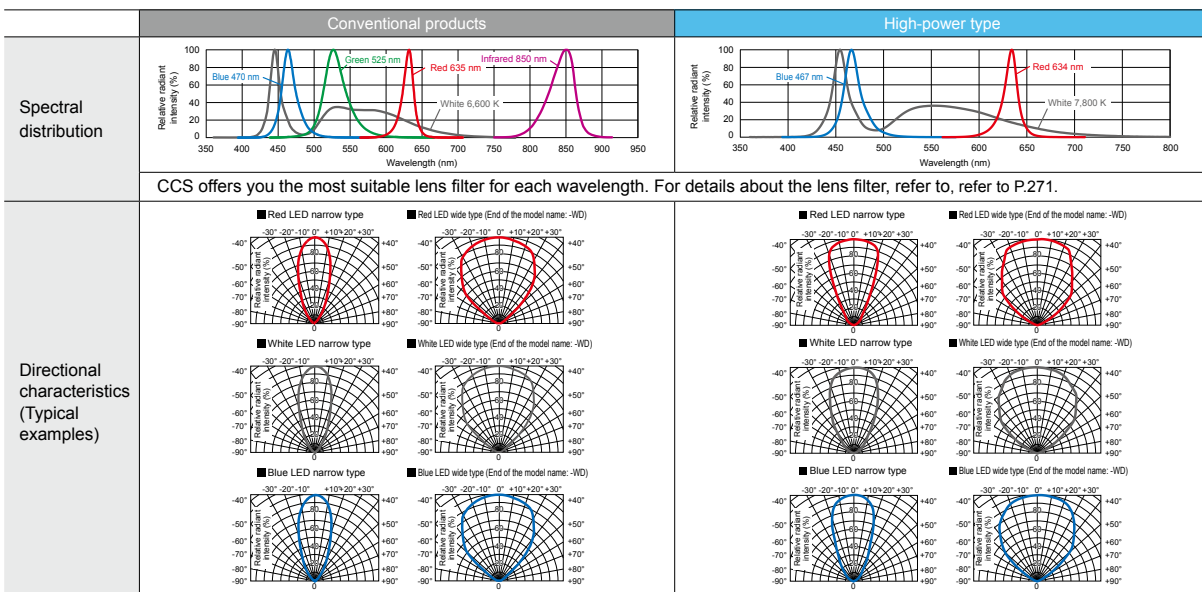
Control Unit Selection Guide ▶ P.229

List of Control Unit Specifications ▶ P.231

\*1 These Light Units have an EL connector (ELP-02V, 1: +Brown, 2: -Blue). Use the Control Unit that has EL connectors.

\*2 For information on the combination of Light Units and POD-series Control Unit, please refer to our website. <http://www.ccs-grp.com/lnk/qr/pod>

## LED properties



Be sure to read the "Instruction Guide" included with the product before use and observe cautionary information.

The data included is for reference only. Actual values may vary.

You can inquire using  
our website.Requests for  
Light Unit  
SelectionRequests for  
Loan  
ProductsRequests for  
EstimatesRequests for  
a CatalogProduct  
InquiriesOther  
Inquiries

Inquire on our website here.

<http://www.ccs-grp.com/contact/>

# LDL2 series



Refer to our website for product details.

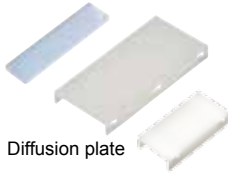
CCS LDL2 Search



You can also use your smartphone or cell phone.

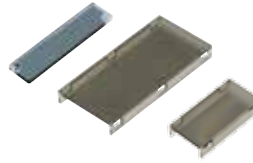
For quick access.

## Options



Can prevent glare, which is a problem when making images of glossy workpieces.

Diffusion plate



Use with a polarizing filter to remove the light's surface reflection.

Polarizing plate

Model name	Applicable Light Unit (Conventional product/High-power type) (Common for all colors)
DF-LDL2-19X4	LDL2-19X4
DF-LDL2-33X8	LDL2-33X8
DF-LDL2-41X16	LDL2-41X16 (-WD)
DF-LDL2-80X16	LDL2-80X16 (-WD)
DF-LDL2-119X16	LDL2-119X16 (-WD)
DF-LDL2-158X16	LDL2-158X16 (-WD)
DF-LDL2-26X30	LDL2-26X30 (-WD)
DF-LDL2-50X30	LDL2-50X30 (-WD)
DF-LDL2-74X30	LDL2-74X30 (-WD)
DF-LDL2-98X30	LDL2-98X30 (-WD)
DF-LDL2-122X30	LDL2-122X30 (-WD)
DF-LDL2-146X30	LDL2-146X30 (-WD)
DF-LDL2-218X30	LDL2-218X30 (-WD)
DF-LDL2-266X30	LDL2-266X30 (-WD)

Model name	Applicable Light Unit (Conventional product/High-power type) (Common for all colors)
PL-LDL2-19X4-HO	LDL2-19X4
PL-LDL2-19X4-VE	LDL2-19X4
PL-LDL2-33X8-HO	LDL2-33X8
PL-LDL2-33X8-VE	LDL2-33X8
PL-LDL2-41X16	LDL2-41X16 (-WD)
PL-LDL2-41X16-VE	LDL2-41X16 (-WD)
PL-LDL2-80X16	LDL2-80X16 (-WD)
PL-LDL2-80X16-VE	LDL2-80X16 (-WD)
PL-LDL2-119X16	LDL2-119X16 (-WD)
PL-LDL2-119X16-VE	LDL2-119X16 (-WD)
PL-LDL2-158X16	LDL2-158X16 (-WD)
PL-LDL2-158X16-VE	LDL2-158X16 (-WD)

Model name	Applicable Light Unit (Conventional product/High-power type) (Common for all colors)
PL-LDL2-26X30	LDL2-26X30 (-WD)
PL-LDL2-26X30-VE	LDL2-26X30 (-WD)
PL-LDL2-50X30	LDL2-50X30 (-WD)
PL-LDL2-50X30-VE	LDL2-50X30 (-WD)
PL-LDL2-74X30	LDL2-74X30 (-WD)
PL-LDL2-74X30-VE	LDL2-74X30 (-WD)
PL-LDL2-98X30	LDL2-98X30 (-WD)
PL-LDL2-98X30-VE	LDL2-98X30 (-WD)
PL-LDL2-122X30	LDL2-122X30 (-WD)
PL-LDL2-122X30-VE	LDL2-122X30 (-WD)
PL-LDL2-146X30	LDL2-146X30 (-WD)
PL-LDL2-146X30-VE	LDL2-146X30 (-WD)
PL-LDL2-218X30	LDL2-218X30 (-WD)
PL-LDL2-218X30-VE	LDL2-218X30 (-WD)
PL-LDL2-266X30	LDL2-266X30 (-WD)
PL-LDL2-266X30-VE	LDL2-266X30 (-WD)

▶ P.274

▶ P.275  
There are two kinds of polarizing plates: the HO and the VE. For details, refer to P. 275.



Protects the emitting part of the Light Unit.

Not intended to protect against dust or water.

Protective plate



Bracket

You can freely adjust the illuminating angle when affixing the Bar Light. Various kinds of illumination are possible depending on the affixing method, such as illumination from two or four directions.



Bracket

You can freely adjust the illuminating angle when affixing the Bar Light. Various kinds of illumination are possible depending on the affixing method, such as illumination from two or four directions.

Model name	Applicable Light Unit (Conventional product/High-power type) (Common for all colors)
CV-LDL2-41X16	LDL2-41X16 (-WD)
CV-LDL2-80X16	LDL2-80X16 (-WD)
CV-LDL2-119X16	LDL2-119X16 (-WD)
CV-LDL2-158X16	LDL2-158X16 (-WD)
CV-LDL2-26X30	LDL2-26X30 (-WD)
CV-LDL2-50X30	LDL2-50X30 (-WD)
CV-LDL2-74X30	LDL2-74X30 (-WD)
CV-LDL2-98X30	LDL2-98X30 (-WD)
CV-LDL2-122X30	LDL2-122X30 (-WD)
CV-LDL2-146X30	LDL2-146X30 (-WD)
CV-LDL2-218X30	LDL2-218X30 (-WD)
CV-LDL2-266X30	LDL2-266X30 (-WD)

Not applicable for the LDL2-19X4 and LDL2-33X8 series.

▶ P.279

Model name	Note (Conventional product/High-power type)
BK-LDL2	Angle adjustment bracket common for the LDL2 series (x2)

Not applicable for the LDL2-19X4 and LDL2-33X8 series.

▶ P.277

Model name	Note (Conventional product/High-power type)
BK-LDQ2-33X8	Bracket that can install four of the Bar Lights.

▶ P.277

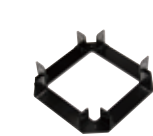
Usage example of the BK-LDL2



Adjustable illuminating angle between 0 to 90°

We accept custom orders for the brackets that are applicable for the following products. Contact your CCS sales representative for details.

Applicable Light Unit (High-power type)	BK-LDQ2
LDL2-19X4	Bracket that can install four Bar Lights. (Custom orders)
LDL2-26X30	
LDL2-50X30	



You can freely adjust the illuminating angle when affixing the Bar Light. Various kinds of illumination are possible depending on the affixing method, such as illumination from two or four directions.

Bracket

Model name	Note (Conventional product/High-power type)
BK-LDQ2-41X16	Bracket that can install four of the Bar Lights.
BK-LDQ2-80X16	
BK-LDQ2-119X16	
BK-LDQ2-158X16	
BK-LDQ2-74X30	
BK-LDQ2-98X30	
BK-LDQ2-122X30	
BK-LDQ2-146X30	
BK-LDQ2-218X30	
BK-LDQ2-266X30	

▶ P.277

### Optional accessories for the high-power type Light Units

Optional accessories are applicable to the high-power type products as well as to the conventional products of the same size.

For details on the optional accessories that are applicable to the Light Units of the newly added size, refer to the tables under "Options."

We have various materials.

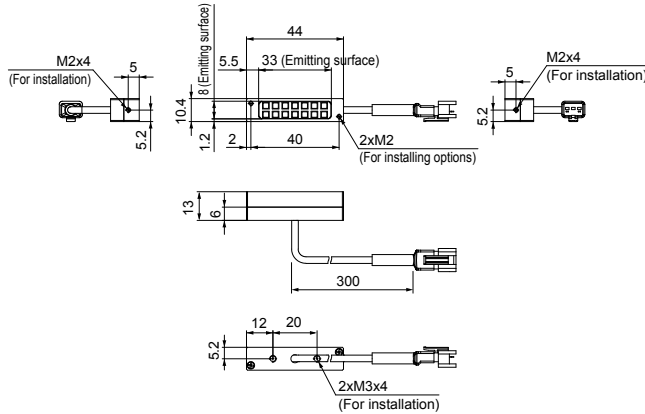
- PDF Drawings
- DXF Drawings
- 3D CAD
- Instruction Guides
- Product Filers
- Imaging Samples
- Data Sheets
- Examples of Custom Ordered Products

Download here.  
<http://www.ccs-grp.com/dl/>

## Dimensions (mm)

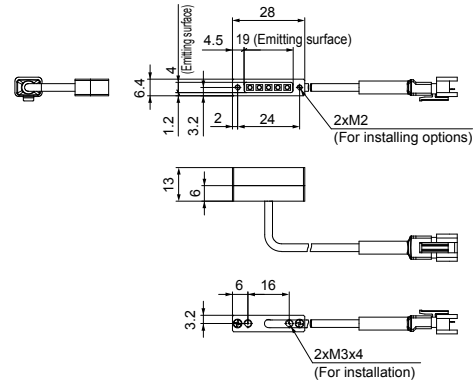
### LDL2-33X8 Standard products (Conventional products/High-power type)

Common for all colors



### LDL2-19X4 Standard products (High-power type)

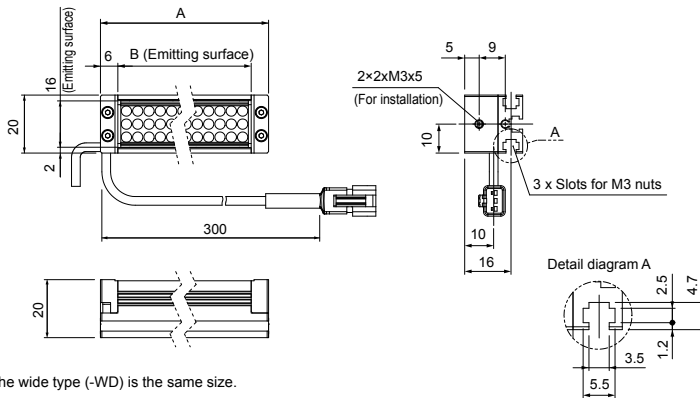
Common for all colors



### LDL2-nnnX16 Standard products (Conventional products/High-power type) Special orders (Conventional products/High-power type)

nnn=B (Emitting surface)

Common for all colors



The wide type (-WD) is the same size.

Standard products  
(Conventional products/High-power type)

Applicable Light Unit	A	B
LDL2-41X16 (-WD)	53	41
LDL2-80X16 (-WD)	92	80
LDL2-119X16 (-WD)	131	119
LDL2-158X16 (-WD)	170	158

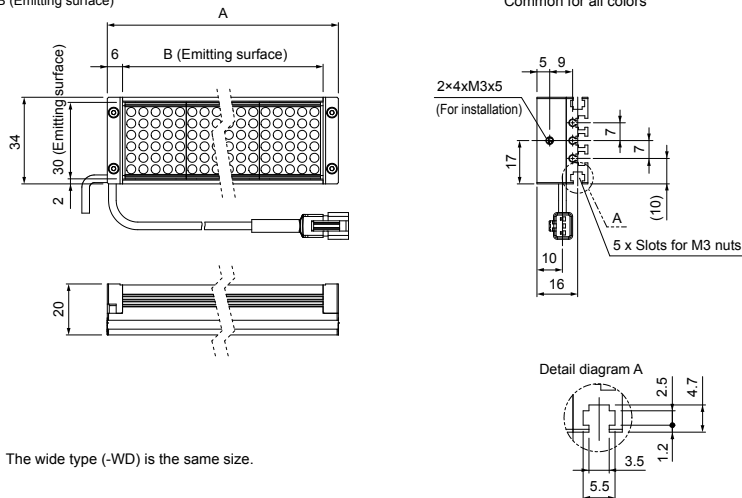
Special orders  
(Conventional products/High-power type)

Applicable Light Unit	A	B
LDL2-197X16 (-WD)	209	197
LDL2-236X16 (-WD)	248	236
LDL2-275X16 (-WD)	287	275
LDL2-314X16 (-WD)	326	314
LDL2-353X16 (-WD)	365	353
LDL2-392X16 (-WD)	404	392
LDL2-431X16 (-WD)	443	431
LDL2-470X16 (-WD)	482	470
LDL2-509X16 (-WD)	521	509

### LDL2-nnnX30 Standard products (Conventional products/High-power type) Special orders (Conventional products/High-power type)

nnn=B (Emitting surface)

Common for all colors



The wide type (-WD) is the same size.

Standard products  
(Conventional products/High-power type)

Applicable Light Unit	A	B
LDL2-26X30 (-WD)	38	26
LDL2-50X30 (-WD)	62	50
LDL2-74X30 (-WD)	86	74
LDL2-98X30 (-WD)	110	98
LDL2-122X30 (-WD)	134	122
LDL2-146X30 (-WD)	158	146
LDL2-218X30 (-WD)	230	218
LDL2-266X30 (-WD)	278	266

Special orders  
(Conventional products/High-power type)

Applicable Light Unit	A	B
LDL2-170X30 (-WD)	182	170
LDL2-194X30 (-WD)	206	194
LDL2-242X30 (-WD)	254	242
LDL2-290X30 (-WD)	302	290
LDL2-314X30 (-WD)	326	314
LDL2-338X30 (-WD)	350	338
LDL2-362X30 (-WD)	374	362
LDL2-386X30 (-WD)*1	398	386
LDL2-410X30 (-WD)*1	422	410
LDL2-434X30 (-WD)*1	446	434
LDL2-458X30 (-WD)*1	470	458
LDL2-482X30 (-WD)*1	494	482
LDL2-506X30 (-WD)*1	518	506

\*1 For the conventional products: SM connector (SMR-03V-B, 1: +Brown, 2: NC, 3: -Blue)  
For the high-power type: EL connector (ELP-02V, 1: +Brown, 2: -Blue).  
Use the Control Unit which has EL connectors.

You can change the connectors of the Light Unit cable. Choose between M12 connectors and flying leads. Refer to P.5 for details.

You can inquire using  
our website.

Requests for  
Light Unit  
Selection

Requests for  
Loan  
Products

Requests for  
Estimates

Requests for  
a Catalog

Product  
Inquiries

Other  
Inquiries

Inquire on our website here.  
<http://www.ccs-grp.com/contact/>

Direct Lighting	LDR2
	LDR2-LA
	LDR-LA1
	SQR
	SQR-TP
Diffused Lighting	HPR2
	LFR
	LKR
	FPR
	FPQ2
Direct Lighting	<b>LDL2</b>
	LDLB
	HLDL2
	HL
	TH2 (5 types)
	TH
	LFL
	HPD2
	LDM2
	LAV
Diffused Lighting	PDM
	LFX3
	LFX3-PT
	LFX2
	LFV3
Colimated Lighting	MSU
	MFU
Strobe Lighting	PF
	Water-proof
Ultraviolet Lighting	
	UV
Infrared Lighting	LNSP-UV-FN
	IR2
Intensity Control	IU
	Spot Lighting, Etc.
LV	
LSP	
HFS/HFR	
HLV2-NR	
Convergent Lighting	HLV2-3M-RGB-3W
	PFBR
	PFB2
	LNLP
	LNSP2
Diffused Lighting	LNSP
	Coaxial Units
	LNSP-FN
	LN/LN-HK
	LNSD
Oblique Angled Lighting	LND2
	HLND
	LT
	LNV/HLDN
	LNDG
Lenses	LNIS
	LNIS-FN
	Telecentric Lens
	Macro Lens