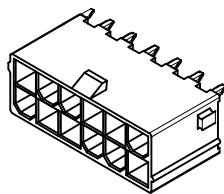


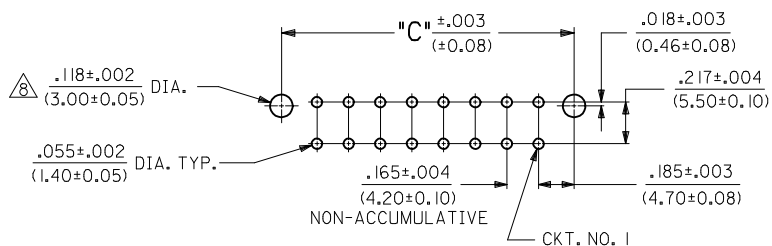
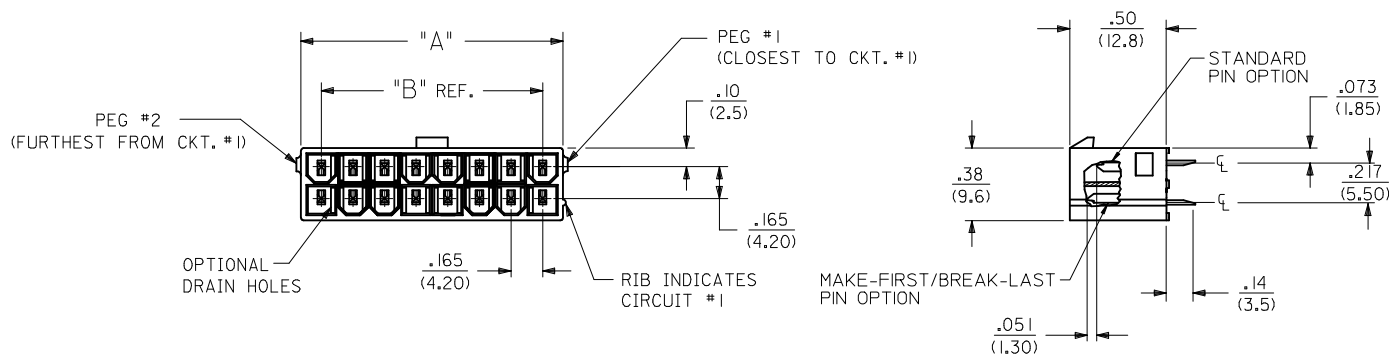
	13	12	11
	CIRCUIT SIZE	DIM. "A"	DIM. "B"
J	2	.21 (5.4)	—
	4	.38 (9.6)	.17 (4.2)
	6	.54 (13.8)	.33 (8.4)
I	8	.71 (18.0)	.50 (12.6)
	10	.87 (22.2)	.66 (16.8)
	12	1.04 (26.4)	.83 (21.0)
H	14	1.20 (30.6)	.99 (25.2)
	16	1.37 (34.8)	1.16 (29.4)
	18	1.54 (39.0)	1.32 (33.6)
G	20	1.70 (43.2)	1.49 (37.8)
	22	1.87 (47.4)	1.65 (42.0)
	24	2.03 (51.6)	1.82 (46.2)



12 CKT SHOWN

NOTES:

- MATERIALS:  
HOUSING MATERIAL AND OPTIONS: SEE CHART  
TERMINALS: BRASS
- TERMINAL PLATING:  
A = .000035/(0.00089) MIN. BRIGHT TIN OVER .000020/(0.00051) MIN. COPPER OVERALL  
B = .000030/(0.00076) MIN. SELECT GOLD AND .000100/(0.00254) MIN. MATTE TIN OVER .000050/(0.00127) MIN. NICKEL OVERALL  
C = .000100/(0.00254) MIN. BRIGHT TIN OVER .000050/(0.00127) MIN. NICKEL OVERALL  
D = .000100/(0.00254) MIN. MATTE TIN OVER .000050/(0.00127) MIN. NICKEL OVERALL
- PRODUCT SPECIFICATION: PS-5556-001
- PACKAGING: SEE CHART.
- PART MATES WITH MINI-FIT JR. RECEPTACLE #5557.
- PARTS ARE NOT DESIGNED FOR CURRENT SHARING.
- CONNECTOR ASSEMBLIES ARE NOT DESIGNED TO BE MATED OR UNMATED WHILE CIRCUITS ARE LIVE.
- LOCATION OF .118±.002/(3.00±0.05) DIAMETER HOLES ON P.C. BOARD IS FOR OPTIONAL PEGS.
- PART CONFORMS TO CLASS "B" REQUIREMENTS OF COSMETIC SPECIFICATION PS-45499-002 EXCEPT IN AREA OF PEG CUT-OFF.
- 4 CIRCUIT PARTS WILL HAVE PEG DESIGN A. ALL OTHER CIRCUIT SIZES WILL HAVE PEG DESIGN B.

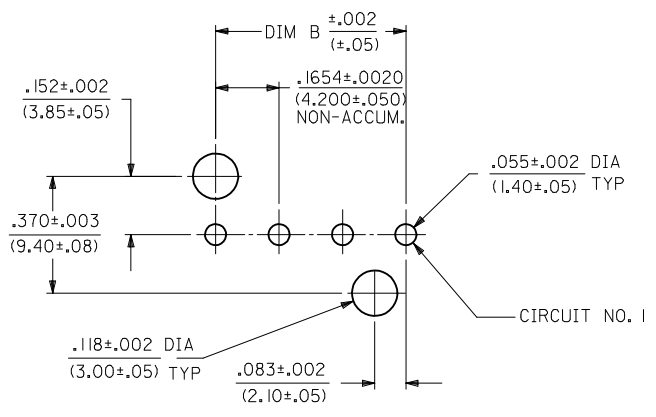
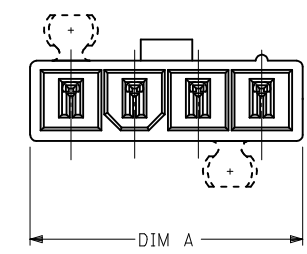
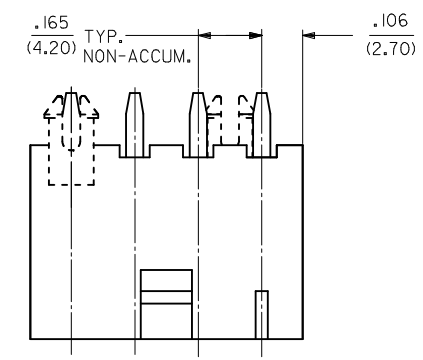
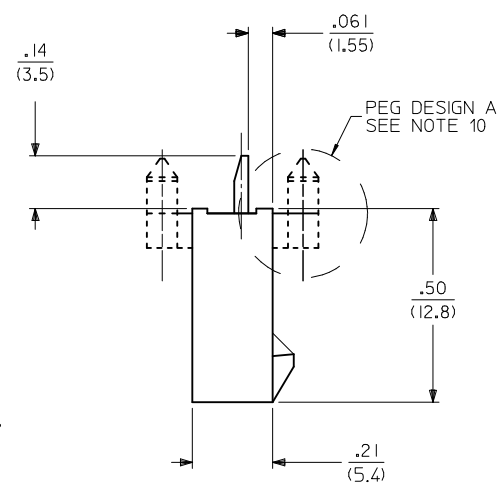
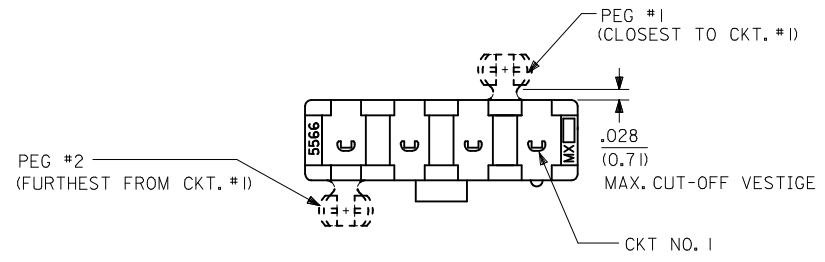
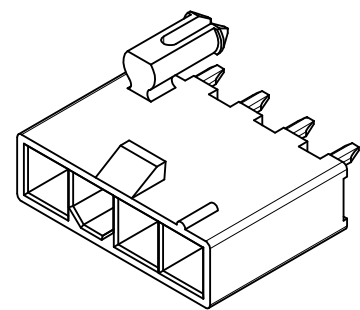


RECOMMENDED HOLE LAYOUT FOR .070/(1.78) MAX. THICK P.C. BOARD VIEWED FROM COMPONENT SIDE (SEE NOTE 8)

SEE SHEET 2 FOR SINGLE ROW PRODUCT

ADD 43588-0029 EC NO: UCP2015-4882 DRWINANGUYEN 2015/05/20 CHKD:JBELL 2015/05/22 APPR:FSMITH 2015/06/04	QUALITY SYMBOLS ▽=0 ▽=0 ▽=0	GENERAL TOLERANCES (UNLESS SPECIFIED)		DIMENSION STYLE IN/MM		SCALE 2:1	DESIGN UNITS METRIC	THIRD ANGLE PROJECTION
		mm	INCH	DRAWN BY AFG	DATE 1995/07/19	TITLE 2-24 CKT VERT HDR ASSY W/PEGS REMOVED OPTION W/WO DRAIN HOLE MINI-FIT	DOCUMENT NO. SDA-43588-****	SHEET NO. 1 OF 4
4 PLACES ± --- ± ---		3 PLACES ± --- ± .015		CHECKED BY RJF	DATE 1995/07/19	molex		
2 PLACES ± 0.38 ± .020		1 PLACE ± 0.50 ± ---		APPROVED BY FSMITH	DATE 2010/03/08			THIS DRAWING CONTAINS INFORMATION THAT IS PROPRIETARY TO MOLEX INCORPORATED AND SHOULD NOT BE USED WITHOUT WRITTEN PERMISSION
0 PLACE ± ±		ANGULAR ±1/2°		SEE SHEET 3				
DRAFT WHERE APPLICABLE MUST REMAIN WITHIN DIMENSIONS								

CKT SIZE	DIM A	DIM B
4	.709 (18.00)	.496 (12.60)
5	.874 (22.20)	.661 (16.80)
6	1.039 (26.40)	.827 (21.00)
7	1.205 (30.60)	.992 (25.20)
8	1.370 (34.80)	1.157 (29.40)
9	1.535 (39.00)	1.323 (33.60)
10	1.701 (43.20)	1.488 (37.80)
11	1.866 (47.40)	1.654 (42.00)
12	2.031 (51.60)	1.819 (46.20)



RECOMMENDED HOLE LAYOUT FOR  
.070/(1.78) MAX. THICK P. C. BOARD  
VIEWED FROM COMPONENT SIDE  
(SEE NOTE 8)

SEE SHEET 1 FOR DUAL ROW PRODUCT

<b>SEE SHEET 1</b> EC NO: UCP2015-4882 DRW: NGUYEN 2015/05/20 CHKD: BELL 2015/05/22 APPR: FSMITH 2015/06/04	QUALITY SYMBOLS 	GENERAL TOLERANCES (UNLESS SPECIFIED)		DIMENSION STYLE <b>IN/MM</b>	SCALE <b>2:1</b>	DESIGN UNITS <b>METRIC</b>	THIRD ANGLE PROJECTION	
		4 PLACES ± --- ± --- 3 PLACES ± --- ± .015 2 PLACES ± 0.38 ± .020 1 PLACE ± 0.50 ± --- 0 PLACE ± ±	mm INCH DRAWN BY DATE AFG 1995/07/19 CHECKED BY DATE RJF 1995/07/19 APPROVED BY DATE FSMITH 2010/03/08	TITLE <b>2-24 CKT VERT HDR ASSY          W/PEGS REMOVED OPTION          W/NO DRAIN HOLE MINI-FIT</b>			DOCUMENT NO. <b>SDA-43588-****</b>	SHEET NO. <b>2 OF 4</b>
		ANGULAR ±1/2°		<b>SEE SHEET 3</b>				
		DRAFT WHERE APPLICABLE MUST REMAIN WITHIN DIMENSIONS		THIS DRAWING CONTAINS INFORMATION THAT IS PROPRIETARY TO MOLEX INCORPORATED AND SHOULD NOT BE USED WITHOUT WRITTEN PERMISSION				
REV <b>D18</b>								



