

REVISIONS				
SYM	ZONE	ECN, ERN NO.	DATE	APPRD.
B		PROPOSAL	JUL.07.09	A.G
C		ADD GENERAL TOLERANCES	JAN.06.11	A.G
D		ADD GROUNDING CLIP MATERIAL	JAN.10.11	A.G

MATERIAL NOTES:

PLASTIC HOUSING:
HIGH TEMPERATURE LCP
FLAMMABILITY RATING UL94V-0.

CONTACTS:

- PHOSPHOR BRONZE
- PLATING OPTION 2:
30μ" [0.76 μm] MIN. GOLD ON MATING AREA AND 2 μ" (0.05 μm) GOLD FLASH PLATING ON TERMINATION OVER 50μ" [1.27 μm] MIN. NICKEL UNDER LAYER.
- PLATING OPTION 3:
30μ" [0.76 μm] MIN. GOLD ON MATING AREA AND 150-300 μ" (3.81-7.62 μm) MIN. LOW WHISKER MATTE TIN PLATING ON TERMINATION OVER 50μ" [1.27 μm] MIN. NICKEL UNDER LAYER.
- PLATING OPTION 5:
15μ" [0.38 μm] MIN. GOLD ON MATING AREA AND 2 μ" (0.05 μm) GOLD FLASH PLATING ON TERMINATION OVER 50μ" [1.27 μm] MIN. NICKEL UNDER LAYER.
- PLATING OPTION 6:
15μ" [0.38 μm] MIN. GOLD ON MATING AREA AND 150-300 μ" (3.81-7.62 μm) MIN. LOW WHISKER MATTE TIN PLATING ON TERMINATION OVER 50μ" [1.27 μm] MIN. NICKEL UNDER LAYER.
- LUBRICANT OPTION: LUBRICANT CAN BE ADDED ON THE CONTACTS MATING AREA (SEE P/N FOR THE OPTION)

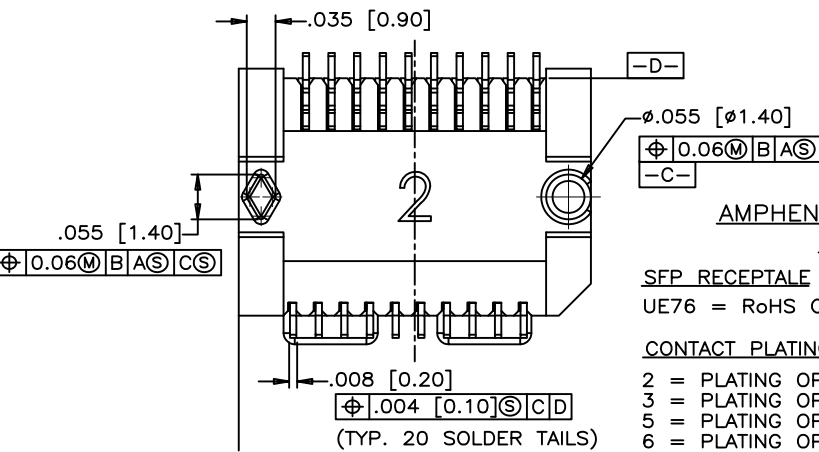
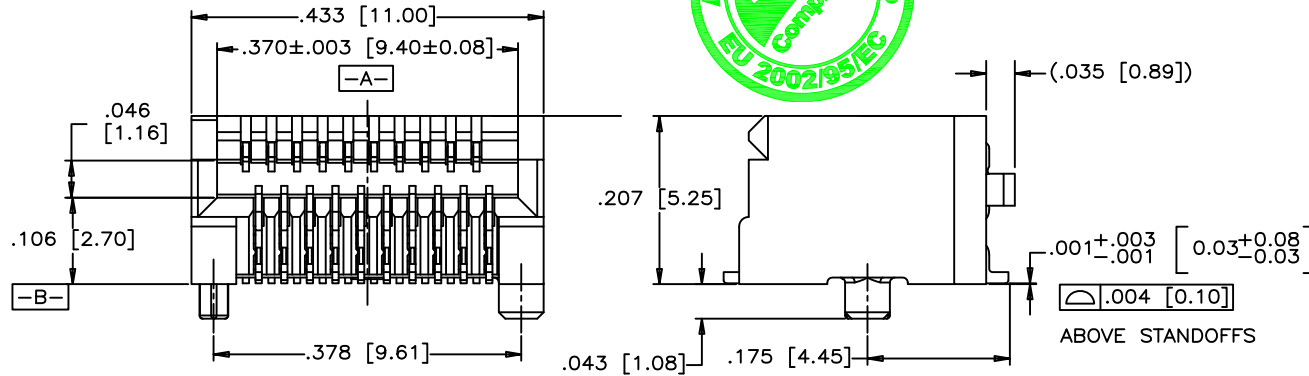
GROUNDING CLIP:

- PHOSPHOR BRONZE
- PLATING FINISH:
30-100μ" [0.76-2.54 μm] NICKEL.

PACKAGING:

TAPE AND REEL.

TEMPERATURE RANGE:
-40°C TO +85°C



AMPHENOL PART NUMBER CONFIGURATION

UE76 - A 20 - X 0 1 X T

SFP RECEPTACLE

UE76 = RoHS COMPLIANT

CONTACT PLATING

- 2 = PLATING OPTION 2 (SEE MATERIAL NOTES)
- 3 = PLATING OPTION 3 (SEE MATERIAL NOTES)
- 5 = PLATING OPTION 5 (SEE MATERIAL NOTES)
- 6 = PLATING OPTION 6 (SEE MATERIAL NOTES)

LUBRICANT OPTION ON MATING AREA

- 0 = NO
- 1 = YES

GENERAL TOLERANCES		INCH	MILLIMETERS
DECIMALS		X.XX±0.014	X.X±0.35
		X.XXX±0.010	X.XX±0.25
ANGLES		X°±1°	X'X"±0.5"

DRAWN	ChigowX	DATE	MAY.15.09
DESIGNED			
CHECKED	J.SI	DATE	MAY.15.09
I. E. APPRD.			
Q. A. APPRD.			
DWG. APPRD.	A.G	DATE	MAY.15.09
ENG. REL. NO.			
REF.			

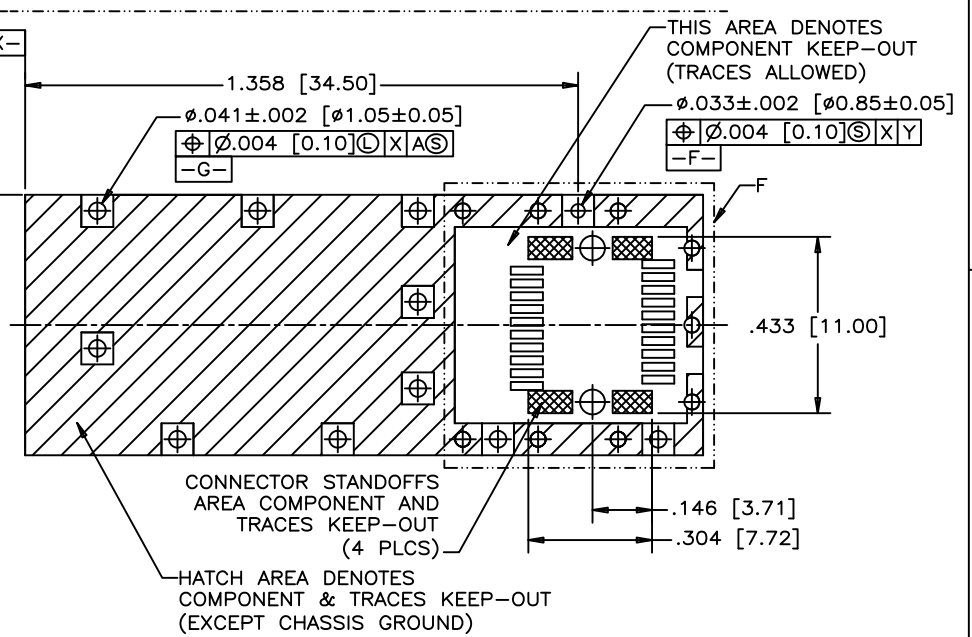
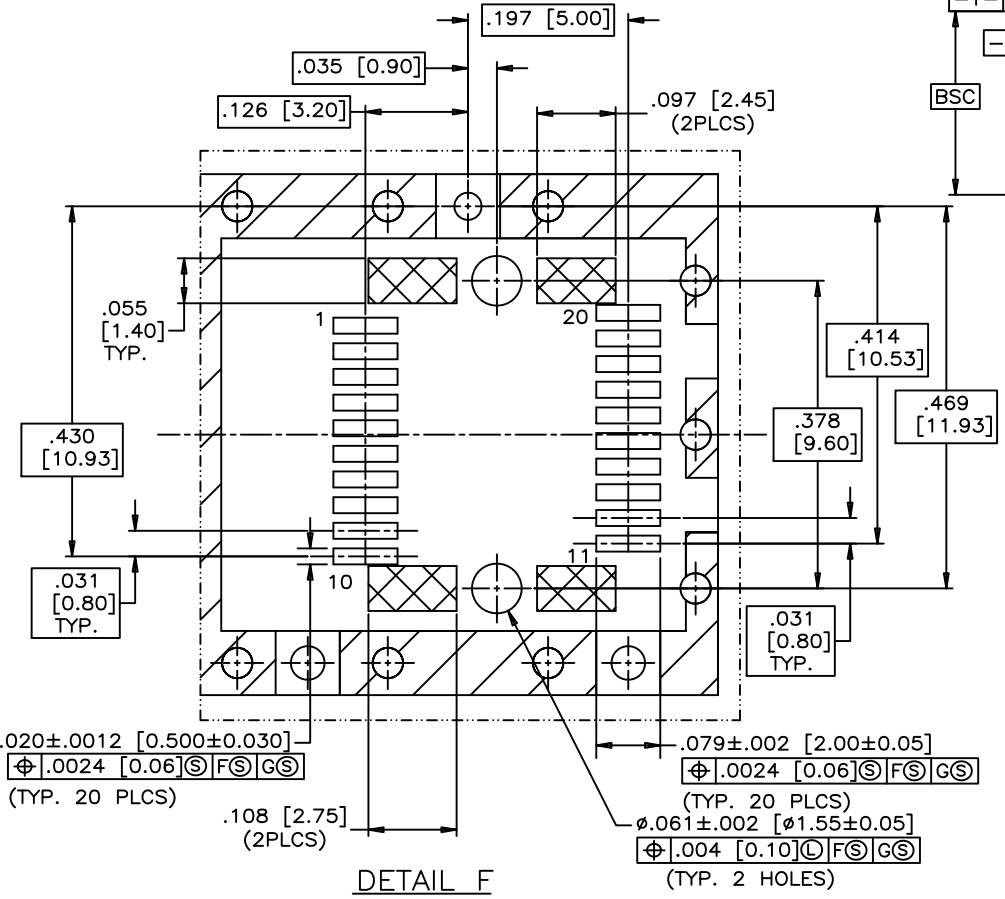
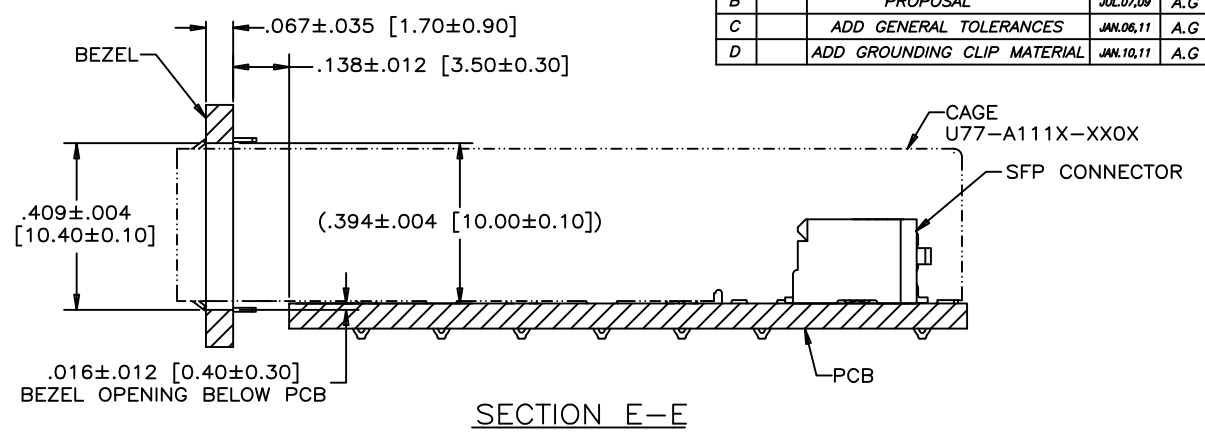
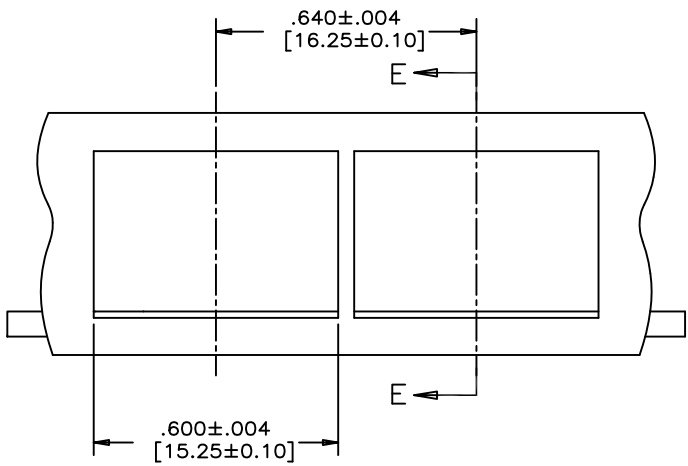
Amphenol Canada Corp.

TITLE
SFP+ 20 POSITION HIGH SPEED CONNECTOR WITH METAL CLIP RECEPTACLE FIXED BOARD, RIGHT ANGLE SMT OPTIONAL PLATING AND LUBRICANT ON MATING

DWG	DRAWING NO.	REV.
A	P-UE76-A20-X01XT	D
SCALE	4/1	WT. _____ SURF. _____ SHEET 1 OF 3

THIS DOCUMENT CONTAINS PROPRIETARY INFORMATION AND SUCH INFORMATION MAY NOT BE DISCLOSED TO OTHERS FOR ANY PURPOSE OR USED FOR MANUFACTURING PURPOSES WITHOUT WRITTEN PERMISSION FROM AMPHENOL CANADA CORP.

REVISIONS			
SYM	ZONE	ECN, ERN NO.	DATE APPRD.
B		PROPOSAL	JUL.07.09 A.G
C		ADD GENERAL TOLERANCES	JAN.06.11 A.G
D		ADD GROUNDING CLIP MATERIAL	JAN.10.11 A.G

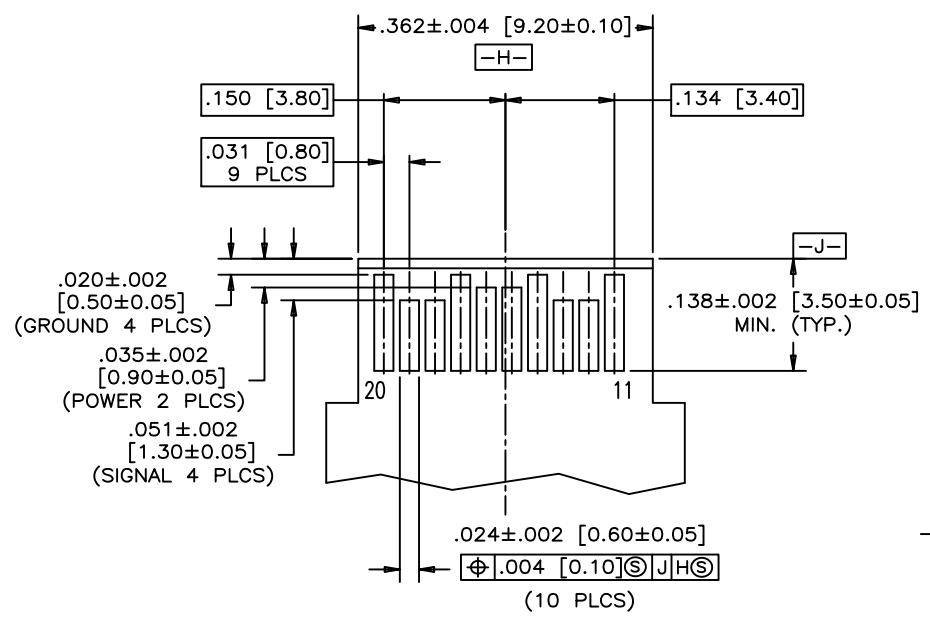


DRAWN		ChigowX	DATE	MAY.15.09
DESIGNED				
CHECKED		J.SI	DATE	MAY.15.09
I. E. APPRD.				
Q. A. APPRD.				
DWG. APPRD.		A.G	DATE	MAY.15.09
ENG. REL. NO.				
REF.				
DIMENSIONS ARE IN		INCHES (mm)		
CODE ID. NO.		03554		

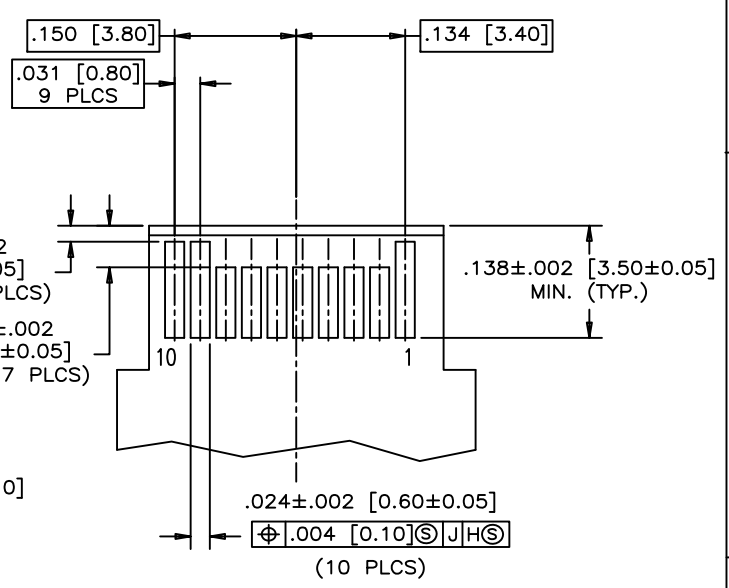
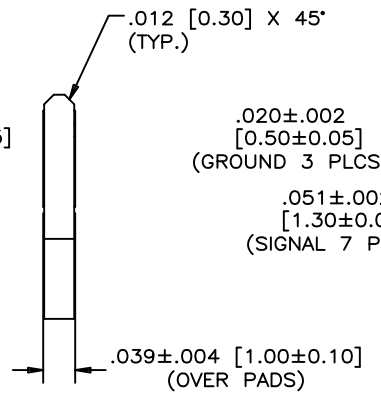
Amphenol Canada Corp.			
TITLE			
SFP+ 20 POSITION HIGH SPEED CONNECTOR WITH METAL CLIP RECEPTACLE FIXED BOARD, RIGHT ANGLE SMT OPTIONAL PLATING AND LUBRICANT ON MATING			
DWG	DRAWING NO.	REV.	
A	P-UE76-A20-X01XT	D	
SCALE	4/1	WT.	SHEET 2 OF 3

THIS DOCUMENT CONTAINS PROPRIETARY INFORMATION AND SUCH INFORMATION MAY NOT BE DISCLOSED TO OTHERS FOR ANY PURPOSE OR USED FOR MANUFACTURING PURPOSES WITHOUT WRITTEN PERMISSION FROM AMPHENOL CANADA CORP.

REVISIONS				
SYM	ZONE	ECN, ERN NO.	DATE	APPRD.
B		PROPOSAL	JUL.07.09	A.G
C		ADD GENERAL TOLERANCES	JAN.06.11	A.G
D		ADD GROUNDING CLIP MATERIAL	JAN.10.11	A.G



TOP VIEW OF BOARD



BOTTOM VIEW OF BOARD

RECOMMENDED LAYOUT DETAIL
MATING TRANSCEIVER PCB

THIS DOCUMENT CONTAINS PROPRIETARY INFORMATION AND SUCH INFORMATION MAY NOT BE DISCLOSED TO OTHERS FOR ANY PURPOSE OR USED FOR MANUFACTURING PURPOSES WITHOUT WRITTEN PERMISSION FROM AMPHENOL CANADA CORP.

DRAWN		ChigowX		DATE		MAY.15.09	
DESIGNED						Amphenol Canada Corp.	
CHECKED		J.SI		DATE		MAY.15.09	
I. E. APPRD.						TITLE	
Q. A. APPRD.						SFP+ 20 POSITION HIGH SPEED CONNECTOR WITH METAL CLIP RECEPTACLE FIXED BOARD, RIGHT ANGLE SMT OPTIONAL PLATING AND LUBRICANT ON MATING	
DWG. APPRD.		A.G		DATE		MAY.15.09	
ENG. REL. NO.						DWG	
REF.						DRAWING NO.	
DIMENSIONS ARE IN		INCHES [mm]		CODE ID. NO.		P-UE76-A20-X01XT	
SCALE		4/1		WT.		SURF.	
SHEET		3		OF		3	