

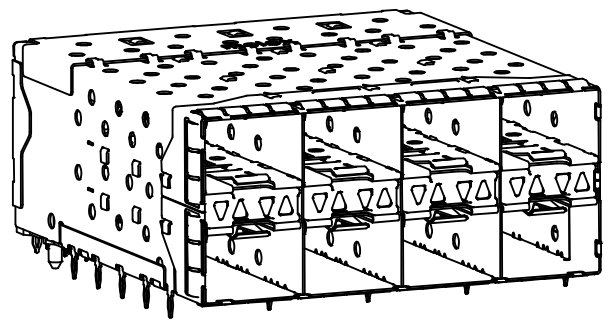
NOTES

- MATERIAL:**
 CAGE: NICKEL SILVER, THICKNESS: 0.25mm
 CONNECTOR HOUSING: GLASS FILLED LIQUID CRYSTAL POLYMER (LCP), UL 94V-0, COLOR: BLACK
 OVERMOLD TERMINAL HOUSING: GLASS FILLED LIQUID CRYSTAL POLYMER (LCP), UL 94V-0, COLOR: BLACK
 TERMINALS: TIN BRASS
 EMI GASKET: CONDUCTIVE ELASTOMER
 LIGHTPIPE HOUSING: ZINC
 LIGHTPIPES: POLYCARBONATE, COLOR: CLEAR
- FINISHES:**
 TERMINALS: CONTACT AREA: 0.76 MICROMETERS MINIMUM HARD GOLD OVER 1.27 MICROMETERS MINIMUM NICKEL.
 COMPLIANT TAIL - MATTE TIN/LEAD OPTION: 0.76 TO 1.52 MICROMETERS 90/10 MATTE TIN-LEAD OVER 0.76 MICROMETERS MINIMUM NICKEL.
 COMPLIANT TAIL - MATTE TIN OPTION: 0.76 TO 1.52 MICROMETERS MATTE TIN OVER 0.76 MICROMETERS MINIMUM NICKEL.
 LIGHTPIPE HOUSING: 80 MICROMETERS MINIMUM NICKEL OVER COPPER
- REFER TO PS-75310-001 PRODUCT SPEC FOR ALL ELECTRICAL, MECHANICAL, AND ENVIRONMENTAL SPECIFICATIONS.
- LIGHTPIPE PAD LAYOUT IS FOR 0805 LOW-PROFILE LED PACKAGE. FOR OTHER RECOMMENDED LAYOUTS REFER TO MOLEX'S REPORT TS-75310-001.
- REFER TO PK-75450-001 FOR ALL PACKAGING SPECIFICATIONS.
- THE SURFACES CONFORM TO THE MOLEX COSMETIC SPEC PS-45499-002. ALL EXTERIOR SURFACES TO BE CLASS "B" SURFACE EXCEPT THE UNDERSIDE (CLASS "C") OF THE CAGE (SIDE TOWARD THE PCB) AND AS OTHERWISE NOTED.
- THE OVERALL CAGE WIDTH AT THE VERTICAL CENTER OF THE FRONT EDGE WILL FALL WITHIN THIS DIMENSION: 57.80 +/- 0.30 MM. THIS PORTION OF THE CAGE WILL FLEX INWARD AS THE CAGE IS BEING INSERTED INTO THE BEZEL OPENING.
- REFER TO AS-76090-001 FOR HIGH SPEED ROUTING RECOMMENDATIONS.
- DATE CODE LOCATION IS SHOWN ABOVE.
 DATE CODE FORMAT: DDDY MX A1
 DDD = DAY OF THE YEAR
 Y = YEAR
 MX = MOLEX
 A = ALPHA CHARACTER - INDICATES MANUFACTURING LINE
 1 = NUMERIC CHARACTER - INDICATES PRODUCTION SHIFT

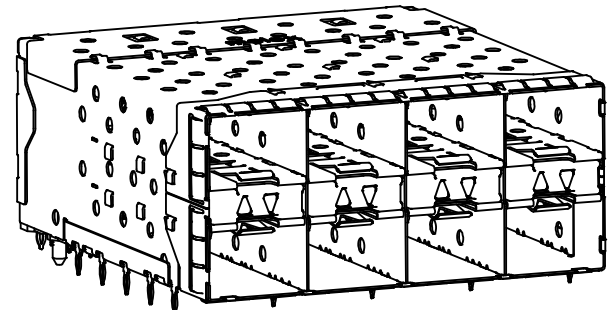
ENHANCED EMI VERSION

| PART NUMBER | DESCRIPTION | VIEW | COMPLIANT TAIL PLATING |
|-------------|---------------|----------|------------------------|
| 760467001 | 4 LIGHT PORTS | SEE PG 2 | MATTE TIN |
| | INNER 2 PORTS | SEE PG 2 | MATTE TIN |
| | OUTER 2 PORTS | SEE PG 2 | MATTE TIN |

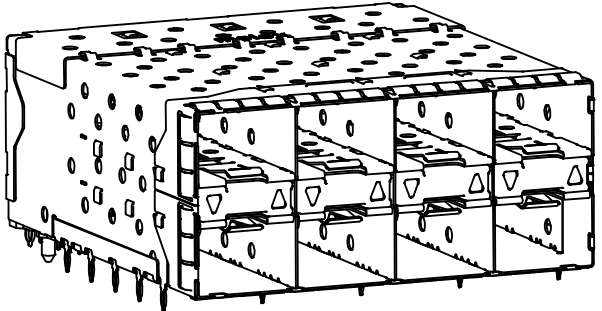
| | | | | | | | | | |
|---|--------------------------------------|---------------------------------------|-------|-----------------------------------|--------------------|---|--------------------------------------|------------------------|--|
| INITIAL RELEASE EC NO: UCP2013-0635 DRWN: TIBARRA 2012/08/09 CHKD: BBARKER 2012/08/15 APPR: SMILLER 2012/08/28 | QUALITY SYMBOLS ▽=0 ▽=0 ▽=0 | GENERAL TOLERANCES (UNLESS SPECIFIED) | | DIMENSION STYLE MM ONLY | | SCALE 3:1 | DESIGN UNITS METRIC | THIRD ANGLE PROJECTION | |
| | | mm | INCH | DRAWN BY TIBARRA | DATE 2012/08/09 | STACKED SFP+ 2X4 ASS'Y W/ METAL EMI GASKET AND LIGHTPIPES, ENHANCED EMI | | | |
| | | 4 PLACES ± --- | ± --- | CHECKED BY BBARKER | DATE 2012/08/15 | | | | |
| | | 3 PLACES ± --- | ± --- | APPROVED BY SMILLER | DATE 2012/08/28 | MATERIAL NO. | DOCUMENT NO. SD-76046-0003 | SHEET NO. 1 OF 5 | |
| DRAFT WHERE APPLICABLE MUST REMAIN WITHIN DIMENSIONS | | ANGULAR ± 5 ° | | SEE TABLE | | THIS DRAWING CONTAINS INFORMATION THAT IS PROPRIETARY TO MOLEX INCORPORATED AND SHOULD NOT BE USED WITHOUT WRITTEN PERMISSION | | | |



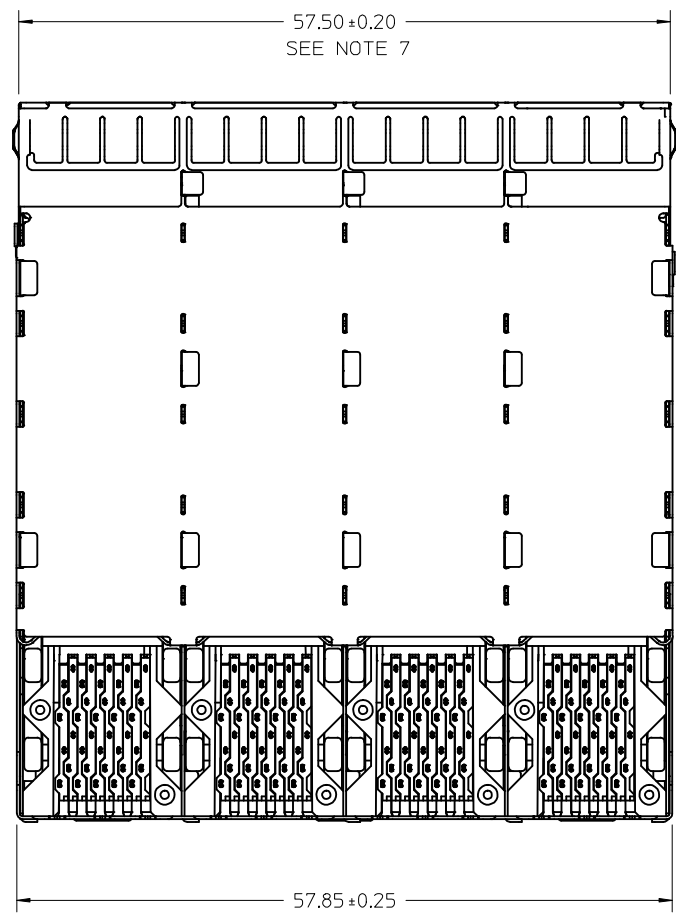
760467001
WITH INNER AND OUTER LIGHTPIPES



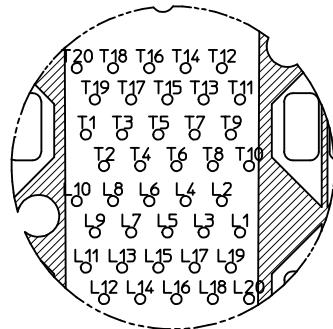
WITH INNER LIGHTPIPES



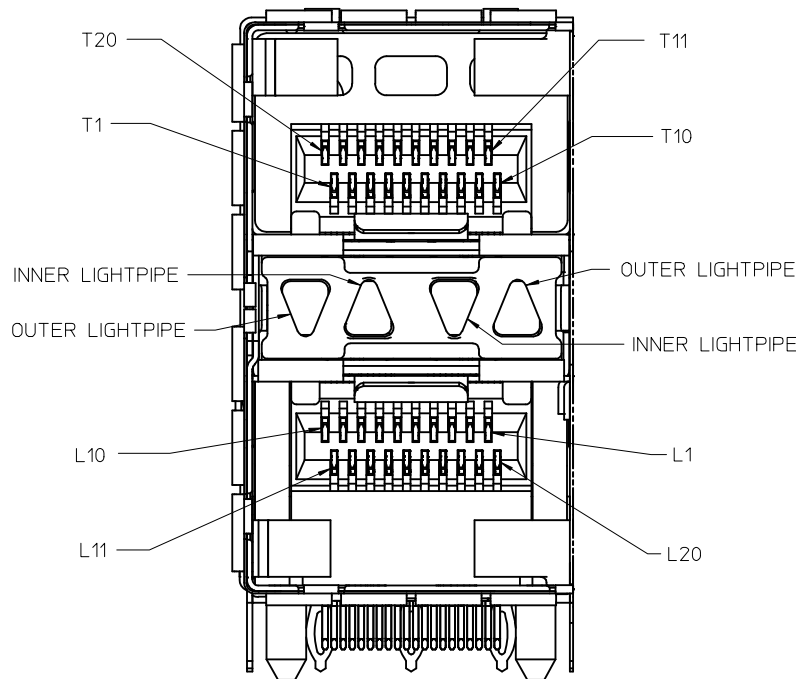
WITH OUTER LIGHTPIPES



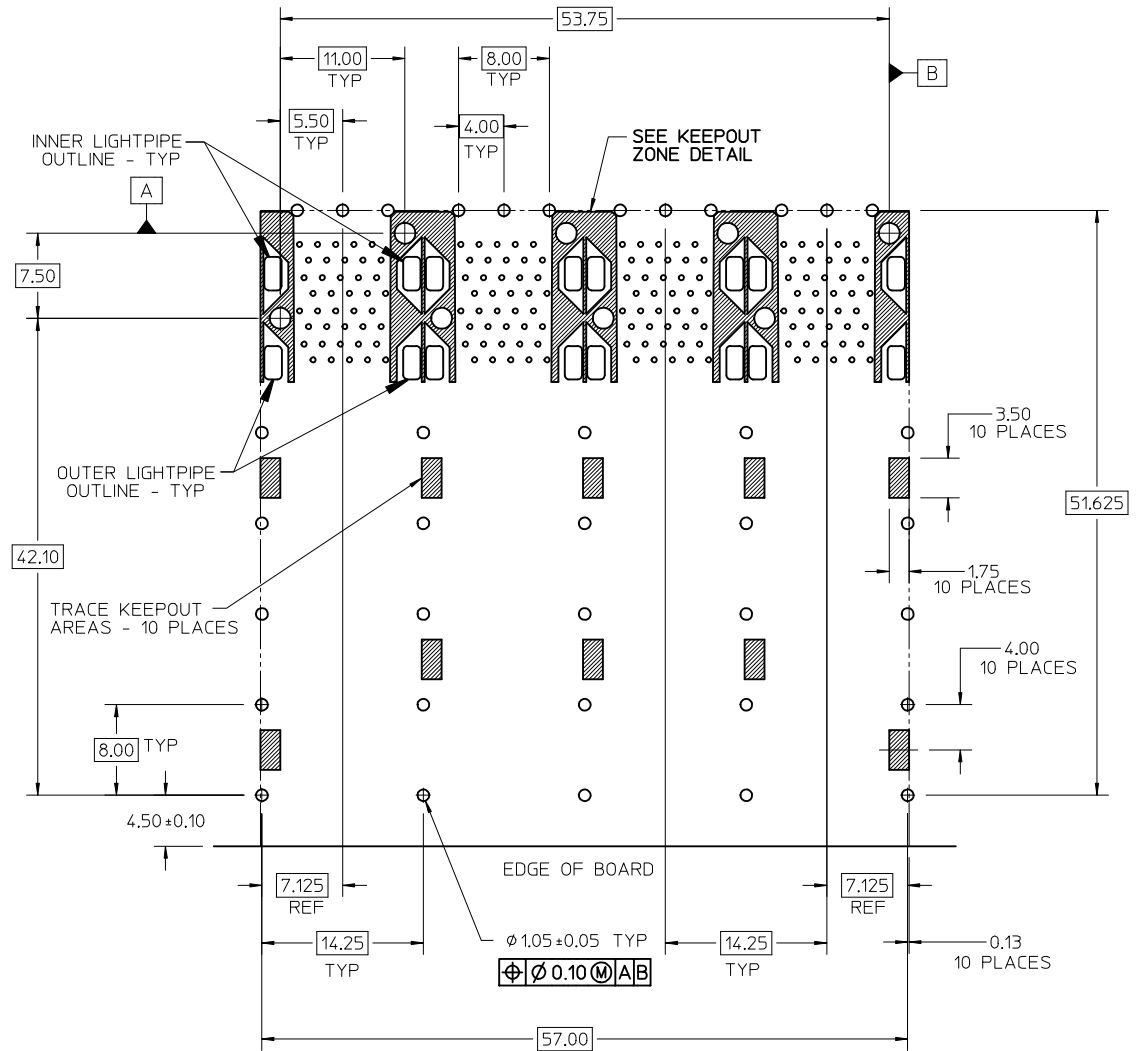
| | | | | | | | | | | | |
|--|--------------------------------------|---------------------------------------|---------------|----------------------------|------------------------|--------------------|---|-------------------------------|--|--|--|
| SEE SHEET 1 EC NO: UCP2013-0635 DRWN: TIBARRA 2012/08/09 CHKD: BBARKER 2012/08/15 APPR: SMILLER 2012/08/28 | QUALITY SYMBOLS ▽=0 ▽=0 ▽=0 | GENERAL TOLERANCES (UNLESS SPECIFIED) | | DIMENSION STYLE MM ONLY | | SCALE 3:1 | DESIGN UNITS METRIC | THIRD ANGLE PROJECTION | | | |
| | | 4 PLACES | ± --- | ± --- | DRAWN BY TIBARRA | DATE 2012/08/09 | TITLE STACKED SFP+ 2X4 ASS'Y W/ METAL EMI GASKET AND LIGHTPIPES, ENHANCED EMI | | | | |
| | | 3 PLACES | ± --- | ± --- | CHECKED BY BBARKER | DATE 2012/08/15 | | | | | |
| | | 2 PLACES | ± 0.13 | ± --- | APPROVED BY SMILLER | | DATE 2012/08/28 | DOCUMENT NO. SD-76046-0003 | | | |
| | | 1 PLACE | ± 0.25 | ± --- | MATERIAL NO. | | | | | | |
| 0 PLACE | ± | ± | ANGULAR ± 5 ° | | SEE TABLE | | THIS DRAWING CONTAINS INFORMATION THAT IS PROPRIETARY TO MOLEX INCORPORATED AND SHOULD NOT BE USED WITHOUT WRITTEN PERMISSION | | | | |



CIRCUIT NUMBERING
COMPONENT SIDE OF BOARD
SCALE 6:1



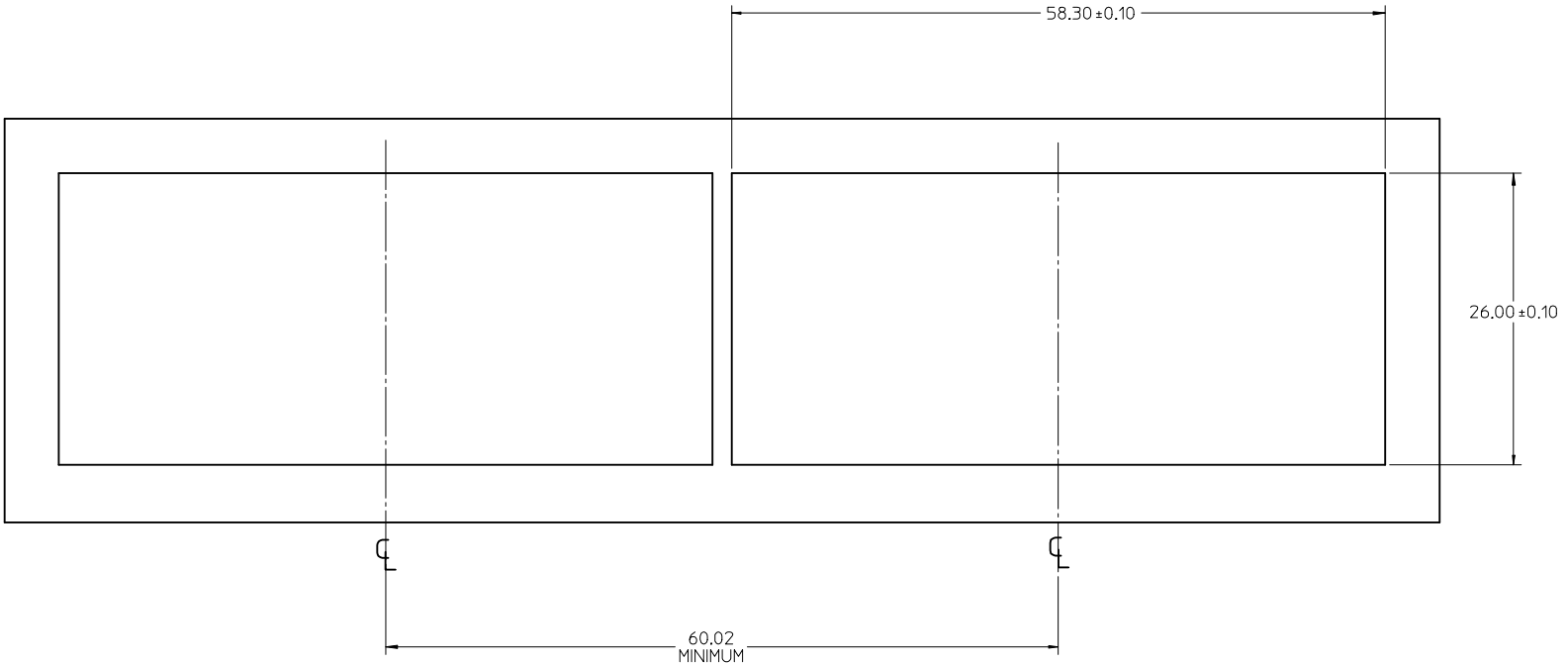
DETAIL A
SCALE 6:1
CIRCUIT NUMBERING
AND LIGHTPIPE
IDENTIFICATION



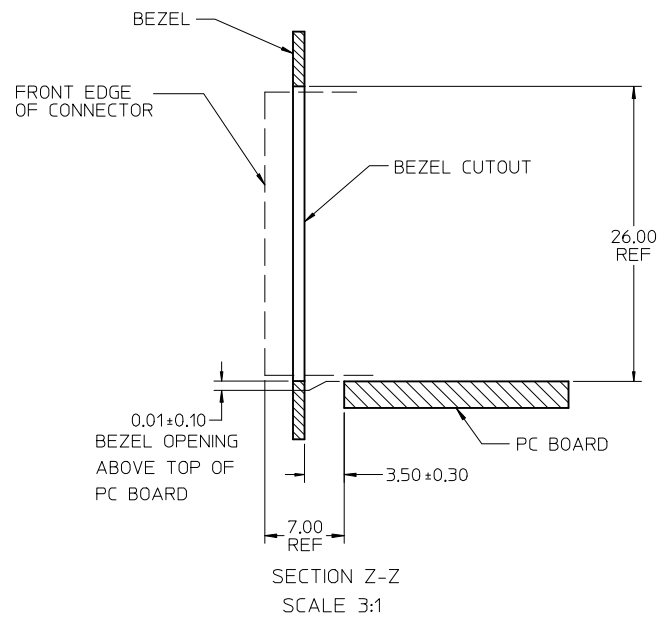
RECOMMENDED PCB LAYOUT - COMPONENT SIDE
RECOMMENDED PCB THICKNESS - 2.36 MM (.093 INCH)
THE ENTIRE AREA OF THE CONNECTOR FOOTPRINT
TO BE CONSIDERED THE KEEPOUT AREA FOR COMPONENTS
(OTHER THAN THE LIGHTPIPE LED'S)
THIS AREA IS INDICATED BY THE DASHED LINE

| | | | | | | | |
|--|-------------|-----------------------|--|--------------------|--|---------------|---|
| SEE SHEET 1 EC NO: UCP2013-0635 DRWN: TIBARRA 2012/08/09 CHKD: BBARKER 2012/08/15 APPR: SMILLER 2012/08/28 | DESCRIPTION | QUALITY SYMBOLS | GENERAL TOLERANCES (UNLESS SPECIFIED) | DIMENSION STYLE | SCALE | DESIGN UNITS | THIRD ANGLE PROJECTION |
| | | ▽=0 | mm INCH | MM ONLY | 3:1 | METRIC | ☉ |
| | | ▽=0 | 4 PLACES ± --- ± --- | DRAWN BY DATE | TIBARRA 2012/08/09 | TITLE | STACKED SFP+ 2X4 ASS'Y W/ METAL EMI GASKET AND LIGHTPIPES, ENHANCED EMI |
| | | ▽=0 | 3 PLACES ± --- ± --- | CHECKED BY DATE | BBARKER 2012/08/15 | molex | |
| | | 2 PLACES ± 0.13 ± --- | APPROVED BY DATE | SMILLER 2012/08/28 | DOCUMENT NO. | SD-76046-0003 | SHEET NO. |
| | | 1 PLACE ± 0.25 ± --- | ANGULAR ± 5 ° | MATERIAL NO. | | | 3 OF 5 |
| | | 0 PLACE ± ± | DRAFT WHERE APPLICABLE MUST REMAIN WITHIN DIMENSIONS | SEE TABLE | | | |
| | | | | SIZE C | THIS DRAWING CONTAINS INFORMATION THAT IS PROPRIETARY TO MOLEX INCORPORATED AND SHOULD NOT BE USED WITHOUT WRITTEN PERMISSION | | |

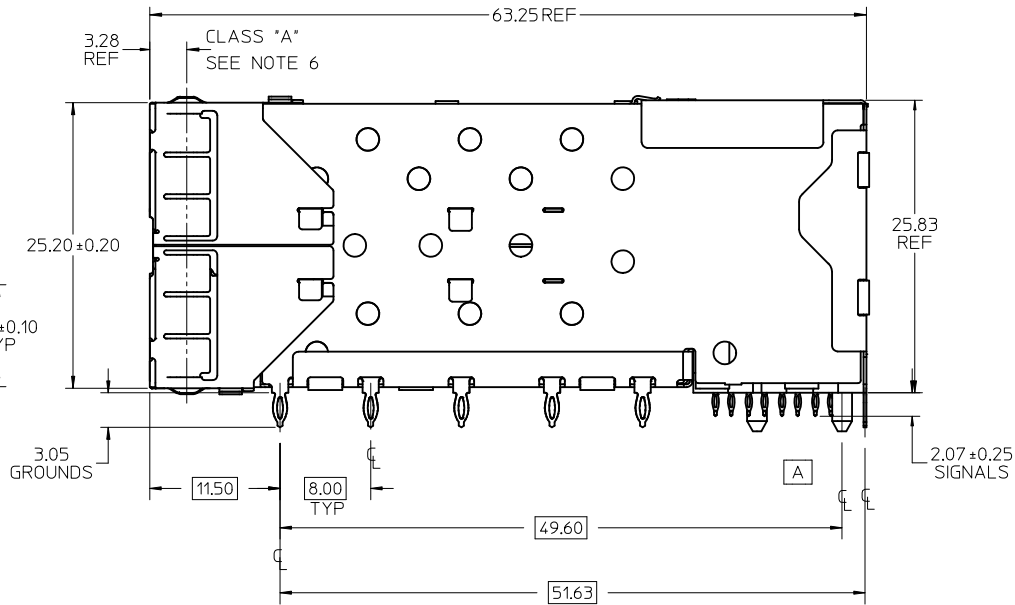
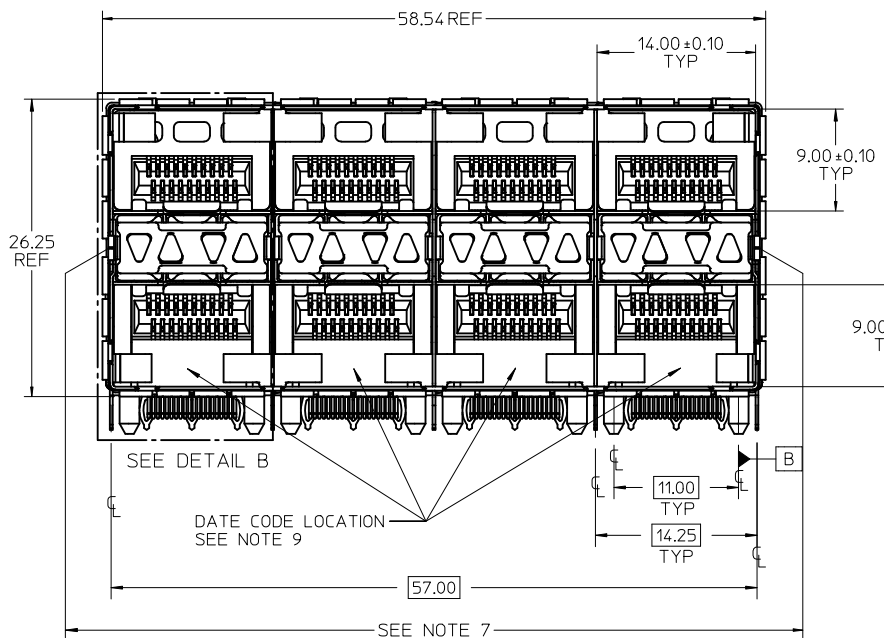
13 12 11 10 9 8 7 6 5 4 3 2 1



BEZEL CUTOUT CENTER SPACING DETAIL
BEZEL THICKNESS 0.8-2.6



| SEE SHEET 1 EC NO: UCP2013-0635 DRWN: TIBARRA 2012/08/09 CHKD: BBARKER 2012/08/15 APPR: SMILLER 2012/08/28 | DESCRIPTION REV: A | QUALITY SYMBOLS | GENERAL TOLERANCES (UNLESS SPECIFIED) | DIMENSION STYLE | SCALE | DESIGN UNITS | THIRD ANGLE PROJECTION | | | | | | | | | | | | | | | | | | |
|---|----------------------------------|--|--|-----------------|-------|--------------|------------------------|-------|-------|----------|-------|-------|----------|--------|-------|---------|--------|-------|---------|---|---|---|---------------|--|---|
| | | $\nabla = 0$ $\nabla = 0$ $\nabla = 0$ | <table border="1"> <tr><th colspan="2">mm</th><th>INCH</th></tr> <tr><td>4 PLACES</td><td>± ---</td><td>± ---</td></tr> <tr><td>3 PLACES</td><td>± ---</td><td>± ---</td></tr> <tr><td>2 PLACES</td><td>± 0.13</td><td>± ---</td></tr> <tr><td>1 PLACE</td><td>± 0.25</td><td>± ---</td></tr> <tr><td>0 PLACE</td><td>±</td><td>±</td></tr> </table> | mm | | INCH | 4 PLACES | ± --- | ± --- | 3 PLACES | ± --- | ± --- | 2 PLACES | ± 0.13 | ± --- | 1 PLACE | ± 0.25 | ± --- | 0 PLACE | ± | ± | MM ONLY DRAWN BY: TIBARRA DATE: 2012/08/09 CHECKED BY: BBARKER DATE: 2012/08/15 APPROVED BY: SMILLER DATE: 2012/08/28 | 3:1 METRIC | | TITLE: STACKED SFP+ 2X4 ASS'Y W/ METAL EMI GASKET AND LIGHTPIPES, ENHANCED EMI |
| | | mm | | INCH | | | | | | | | | | | | | | | | | | | | | |
| | | 4 PLACES | ± --- | ± --- | | | | | | | | | | | | | | | | | | | | | |
| 3 PLACES | ± --- | ± --- | | | | | | | | | | | | | | | | | | | | | | | |
| 2 PLACES | ± 0.13 | ± --- | | | | | | | | | | | | | | | | | | | | | | | |
| 1 PLACE | ± 0.25 | ± --- | | | | | | | | | | | | | | | | | | | | | | | |
| 0 PLACE | ± | ± | | | | | | | | | | | | | | | | | | | | | | | |
| ANGULAR ± 5 ° DRAFT WHERE APPLICABLE MUST REMAIN WITHIN DIMENSIONS | MATERIAL NO. SEE TABLE | DOCUMENT NO. SD-76046-0003 | SHEET NO. 5 OF 5 | | | | | | | | | | | | | | | | | | | | | | |
| THIS DRAWING CONTAINS INFORMATION THAT IS PROPRIETARY TO MOLEX INCORPORATED AND SHOULD NOT BE USED WITHOUT WRITTEN PERMISSION | | | | | | | | | | | | | | | | | | | | | | | | | |

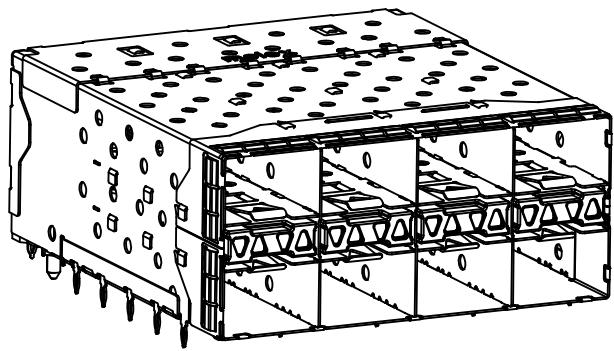


NOTES

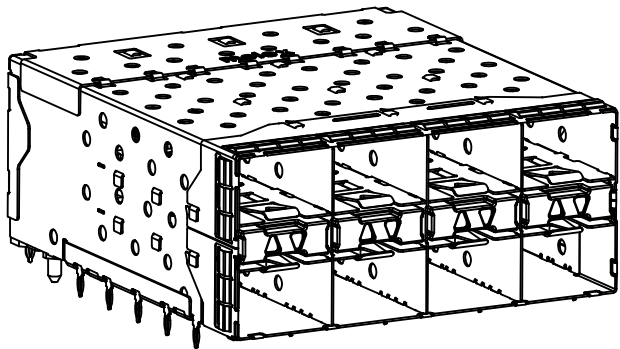
- MATERIAL:**
 CAGE: NICKEL SILVER, THICKNESS: 0.25mm
 CONNECTOR HOUSING: GLASS FILLED LIQUID CRYSTAL POLYMER (LCP), UL 94V-0, COLOR: BLACK
 OVERMOLD TERMINAL HOUSING: GLASS FILLED LIQUID CRYSTAL POLYMER (LCP), UL 94V-0, COLOR: BLACK
 TERMINALS: TIN BRASS
 EMI GASKET: CONDUCTIVE ELASTOMER
 LIGHTPIPE HOUSING: ZINC
 LIGHTPIPES: POLYCARBONATE, COLOR: CLEAR
- FINISHES:**
 TERMINALS: CONTACT AREA: 0.76 MICROMETERS MINIMUM HARD GOLD OVER 1.27 MICROMETERS MINIMUM NICKEL.
 COMPLIANT TAIL - MATTE TIN/LEAD OPTION: 0.76 TO 1.52 MICROMETERS 90/10 MATTE TIN-LEAD OVER 0.76 MICROMETERS MINIMUM NICKEL.
 COMPLIANT TAIL - MATTE TIN OPTION: 0.76 TO 1.52 MICROMETERS MATTE TIN OVER 0.76 MICROMETERS MINIMUM NICKEL.
 LIGHTPIPE HOUSING: 80 MICROMETERS MINIMUM NICKEL OVER COPPER
- REFER TO PS-75310-001 PRODUCT SPEC FOR ALL ELECTRICAL, MECHANICAL, AND ENVIRONMENTAL SPECIFICATIONS.
- LIGHTPIPE PAD LAYOUT IS FOR 0805 LOW-PROFILE LED PACKAGE, FOR OTHER RECOMMENDED LAYOUTS REFER TO MOLEX'S REPORT TS-75310-001.
- REFER TO PK-75450-001 FOR ALL PACKAGING SPECIFICATIONS.
- THE SURFACES CONFORM TO THE MOLEX COSMETIC SPEC PS-45499-002.
 ALL EXTERIOR SURFACES TO BE CLASS "B" SURFACE EXCEPT THE UNDERSIDE (CLASS "C") OF THE CAGE (SIDE TOWARD THE PCB) AND AS OTHERWISE NOTED.
- THE OVERALL CAGE WIDTH AT THE VERTICAL CENTER OF THE FRONT EDGE WILL FALL WITHIN THIS DIMENSION: 57.80+/-0.30 MM. THIS PORTION OF THE CAGE WILL FLEX INWARD AS THE CAGE IS BEING INSERTED INTO THE BEZEL OPENING.
- REFER TO AS-76090-001 FOR HIGH SPEED ROUTING RECOMMENDATIONS.
- DATE CODE LOCATION IS SHOWN ABOVE.
 DATE CODE FORMAT: DDDY MX A1
 DDD = DAY OF THE YEAR
 Y = YEAR
 MX = MOLEX
 A = ALPHA CHARACTER - INDICATES MANUFACTURING LINE
 1 = NUMERIC CHARACTER - INDICATES PRODUCTION SHIFT

| PART NUMBER | DESCRIPTION | VIEW | COMPLIANT TAIL PLATING |
|-------------|---------------|----------|------------------------|
| 760460001 | 4 LIGHT PORTS | SEE PG 2 | MATTE TIN / LEAD |
| 760460002 | INNER 2 PORTS | SEE PG 2 | MATTE TIN / LEAD |
| 760460003 | OUTER 2 PORTS | SEE PG 2 | MATTE TIN / LEAD |
| 760465001 | 4 LIGHT PORTS | SEE PG 2 | MATTE TIN |
| 760465002 | INNER 2 PORTS | SEE PG 2 | MATTE TIN |
| 760465003 | OUTER 2 PORTS | SEE PG 2 | MATTE TIN |

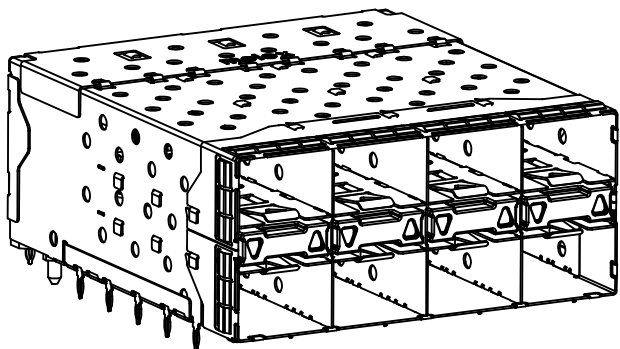
| | | | | | | | | | |
|---|--------------------------------------|---------------------------------------|--|---|--|---------------------|-------------------------------|--|--|
| ADD NOTE 8 & 9 EC NO: UCP2011-2594 DRWN:WOLFE 2011/02/28 CHKD:BBARKER 2011/02/28 APPR:SMILLER 2011/09/20 | QUALITY SYMBOLS ▽=0 ▽=0 ▽=0 | GENERAL TOLERANCES (UNLESS SPECIFIED) | | DIMENSION STYLE MM ONLY | | SCALE 3:1 | DESIGN UNITS METRIC | THIRD ANGLE PROJECTION | |
| | | mm | | INCH | | DRAWN BY DATE | | STACKED SFP+ 2X4 ASS'Y WITH METAL EMI GASKET AND LIGHTPIPES MOLEX INCORPORATED MOLEX SD-76046-001 | |
| | | 4 PLACES ± --- ± --- | | MSANDBERG 1-26-2006 | | | | | |
| | | 3 PLACES ± --- ± --- | | CHECKED BY DATE | | | | | |
| 2 PLACES ± 0.13 ± --- | | JLONG 1-26-2006 | | APPROVED BY DATE | | DOCUMENT NO. | | | |
| 1 PLACE ± 0.25 ± --- | | RNELSON 1-26-2006 | | MATERIAL NO. | | SHEET NO. | | | |
| ANGULAR ± 5 ° | | SEE TABLE | | THIS DRAWING CONTAINS INFORMATION THAT IS PROPRIETARY TO MOLEX INCORPORATED AND SHOULD NOT BE USED WITHOUT WRITTEN PERMISSION | | 1 OF 5 | | | |



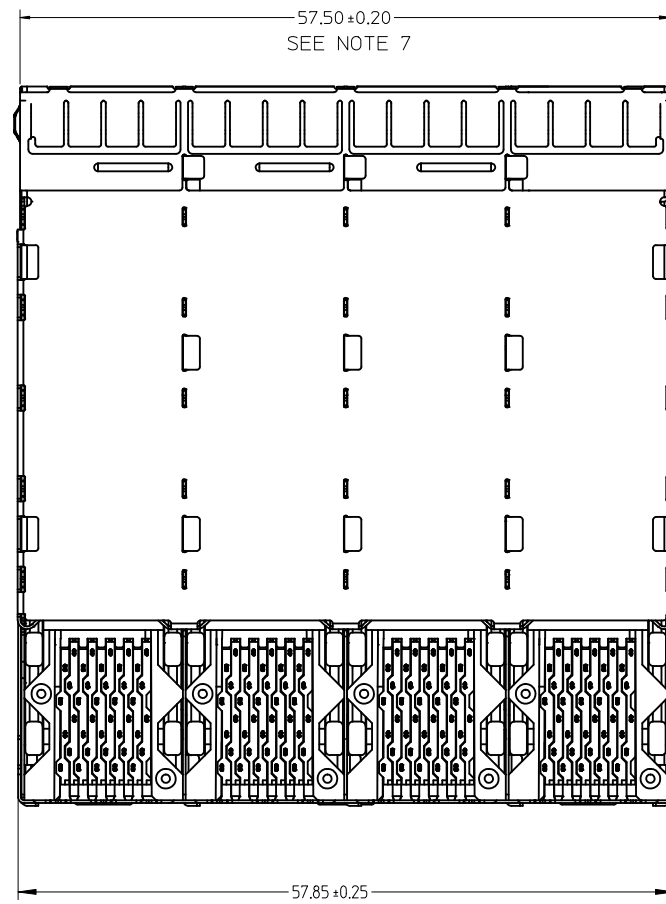
760460001 AND 760465001
WITH INNER AND OUTER LIGHTPIPES



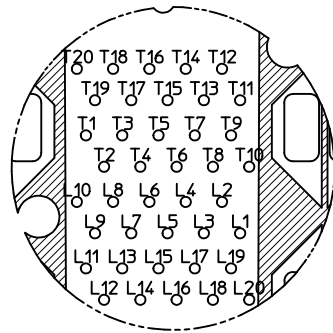
760460002 AND 760465002
WITH INNER LIGHTPIPES



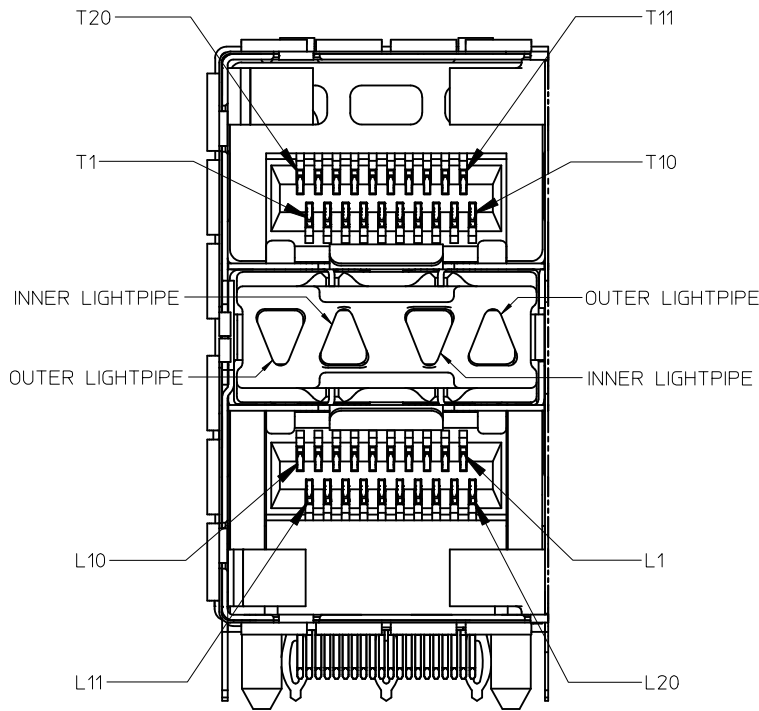
760460003 AND 760465003
WITH OUTER LIGHTPIPES



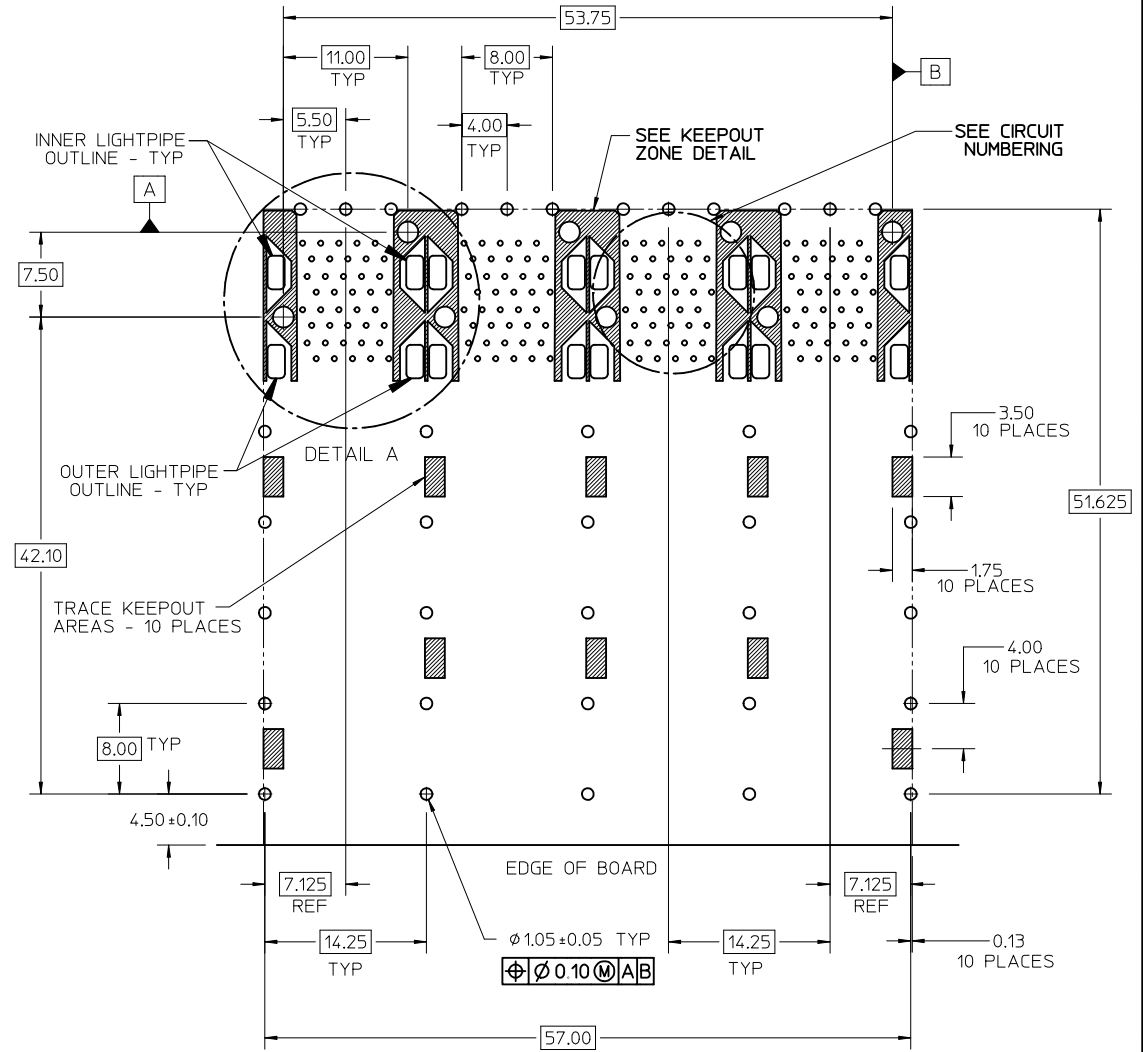
| | | | | | | | | | |
|---|--------------------------------------|---|---------|---|--|---|------------------------|--|--|
| DELETE DETAIL VIEW EC NO: UCP2011-2594 DRWN: MWOLFE 2011/02/28 CHKD: BBARKER 2011/02/28 APPR: SMILLER 2011/09/20 | QUALITY SYMBOLS ∇=0 ∇=0 ∇=0 | GENERAL TOLERANCES (UNLESS SPECIFIED) | | DIMENSION STYLE MM ONLY | SCALE 3:1 | DESIGN UNITS METRIC | THIRD ANGLE PROJECTION | | |
| | | 4 PLACES ± --- ± --- 3 PLACES ± --- ± --- 2 PLACES ± 0.13 ± --- 1 PLACE ± 0.25 ± --- | mm INCH | DRAWN BY DATE MSANDBERG 1-26-2006 | CHECKED BY DATE JLONG 1-26-2006 | TITLE STACKED SFP+ 2X4 ASS'Y WITH METAL EMI GASKET AND LIGHTPIPES | | | |
| | | ANGULAR ± 5 ° | | APPROVED BY DATE RNELSON 1-26-2006 | MATERIAL NO. DOCUMENT NO. SEE TABLE SD-76046-001 | | | | |
| | | DRAFT WHERE APPLICABLE MUST REMAIN WITHIN DIMENSIONS | | SIZE THIS DRAWING CONTAINS INFORMATION THAT IS PROPRIETARY TO MOLEX INCORPORATED AND SHOULD NOT BE USED WITHOUT WRITTEN PERMISSION | | MOLEX INCORPORATED | | | |



CIRCUIT NUMBERING
COMPONENT SIDE OF BOARD
SCALE 6:1



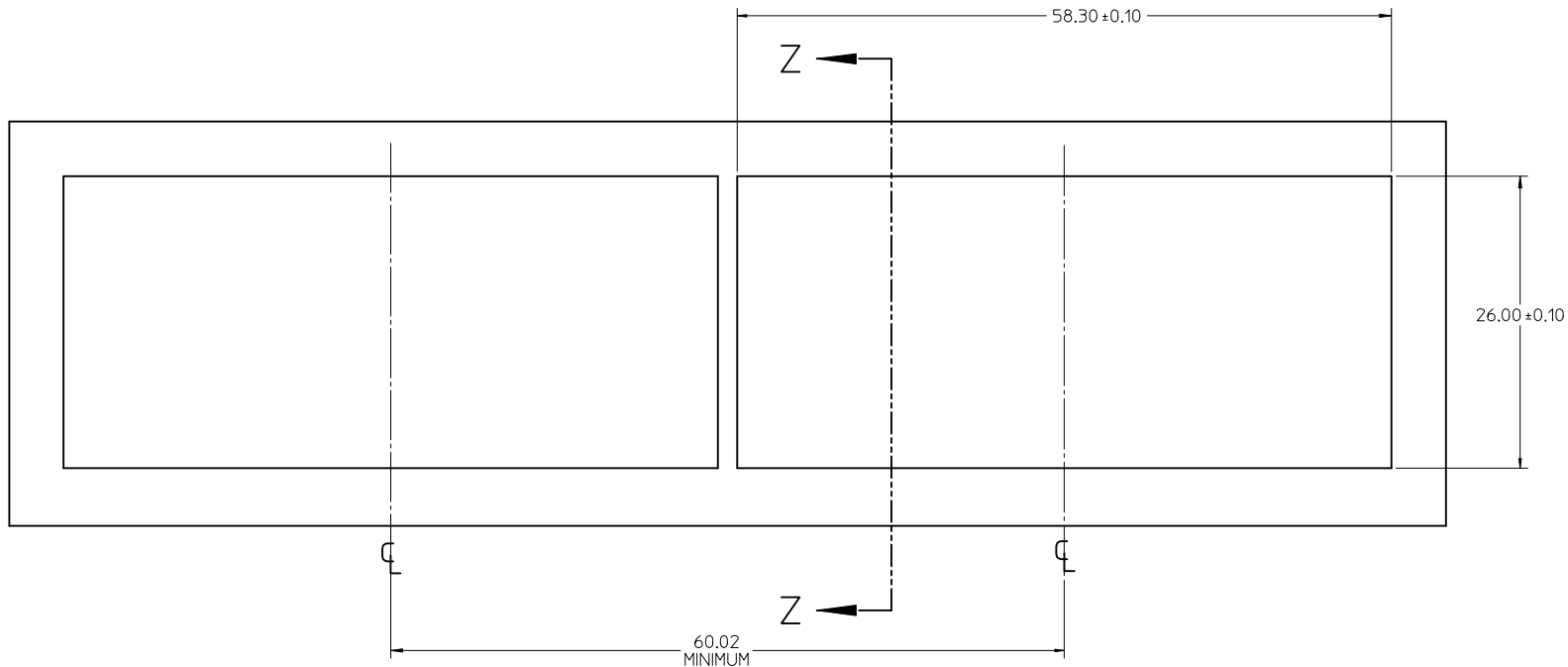
DETAIL B
SCALE 6:1
CIRCUIT NUMBERING
AND LIGHTPIPE
IDENTIFICATION



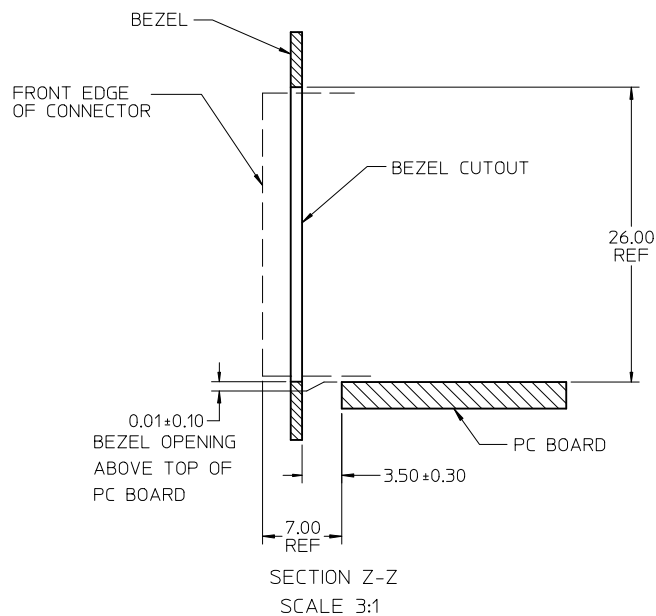
RECOMMENDED PCB LAYOUT - COMPONENT SIDE
RECOMMENDED PCB THICKNESS - 2.36 MM (0.93 INCH)

THE ENTIRE AREA OF THE CONNECTOR FOOTPRINT
TO BE CONSIDERED THE KEEP OUT AREA FOR COMPONENTS
(OTHER THAN THE LIGHTPIPE LED'S)
THIS AREA IS INDICATED BY THE DASHED LINE

| | | | | | | | | | | | |
|-----------------|---------------------|-----------------------|-------------------------|-------------------------|-------------|-----------------|--|---|------------------------|--------------|------------------------|
| ADD DETAIL B | EC NO: UCP2011-2594 | DRWN:WOLFE 2011/02/28 | CHKD:BBARKER 2011/02/28 | APPR:SMILLER 2011/09/20 | DESCRIPTION | QUALITY SYMBOLS | GENERAL TOLERANCES (UNLESS SPECIFIED) | DIMENSION STYLE | SCALE | DESIGN UNITS | THIRD ANGLE PROJECTION |
| | | | | | | ▽=0 | mm INCH | MM ONLY | 3:1 | METRIC | ☉ |
| | | | | | | ▽=0 | 4 PLACES ± --- ± --- | DRAWN BY DATE | TITLE | | |
| | | | | | | ▽=0 | 3 PLACES ± --- ± --- | CHECKED BY DATE | STACKED SFP+ 2X4 ASS'Y | | |
| | | | | | | ▽=0 | 2 PLACES ± 0.13 ± --- | APPROVED BY DATE | WITH METAL EMI GASKET | | |
| | | | | | | | 1 PLACE ± 0.25 ± --- | RNELSON 1-26-2006 | AND LIGHTPIPES | | |
| | | | | | | | ANGULAR ± 5 ° | | MOLEX INCORPORATED | | |
| | | | | | | | DRAFT WHERE APPLICABLE MUST REMAIN WITHIN DIMENSIONS | SEE TABLE | DOCUMENT NO. | SD-76046-001 | SHEET NO. 3 OF 5 |
| | | | | | | | | THIS DRAWING CONTAINS INFORMATION THAT IS PROPRIETARY TO MOLEX INCORPORATED AND SHOULD NOT BE USED WITHOUT WRITTEN PERMISSION | | | |



BEZEL CUTOUT CENTER SPACING DETAIL
BEZEL THICKNESS 0.8-2.6



| | | | | | | | | | |
|---|--------------------------------------|---|----------------------|----------------------------|----------------------|------------------------------|------------------------|--|--|
| DELETE MIDDLE BEZEL DIM EC NO: UCP2011-2594 DRAWN: WOLFE 2011/02/28 CHKD: BARKER 2011/02/28 APPR: MILLER 2011/09/20 | QUALITY SYMBOLS ▽=0 ▽=0 ▽=0 | GENERAL TOLERANCES (UNLESS SPECIFIED) | | DIMENSION STYLE MM ONLY | | SCALE 3:1 | DESIGN UNITS METRIC | THIRD ANGLE PROJECTION | |
| | | 4 PLACES ± --- ± --- | 3 PLACES ± --- ± --- | 2 PLACES ± 0.13 ± --- | 1 PLACE ± 0.25 ± --- | DRAWN BY MSANDBERG | DATE 1-26-2006 | TITLE STACKED SFP+ 2X4 ASS'Y WITH METAL EMI GASKET AND LIGHTPIPES | |
| | | ANGULAR ± 5 ° | | APPROVED BY RNELSON | | DATE 1-26-2006 | MOLEX INCORPORATED | | |
| | | DRAFT WHERE APPLICABLE MUST REMAIN WITHIN DIMENSIONS | | MATERIAL NO. SEE TABLE | | DOCUMENT NO. SD-76046-001 | | SHEET NO. 5 OF 5 | |
| | | THIS DRAWING CONTAINS INFORMATION THAT IS PROPRIETARY TO MOLEX INCORPORATED AND SHOULD NOT BE USED WITHOUT WRITTEN PERMISSION | | | | | | | |