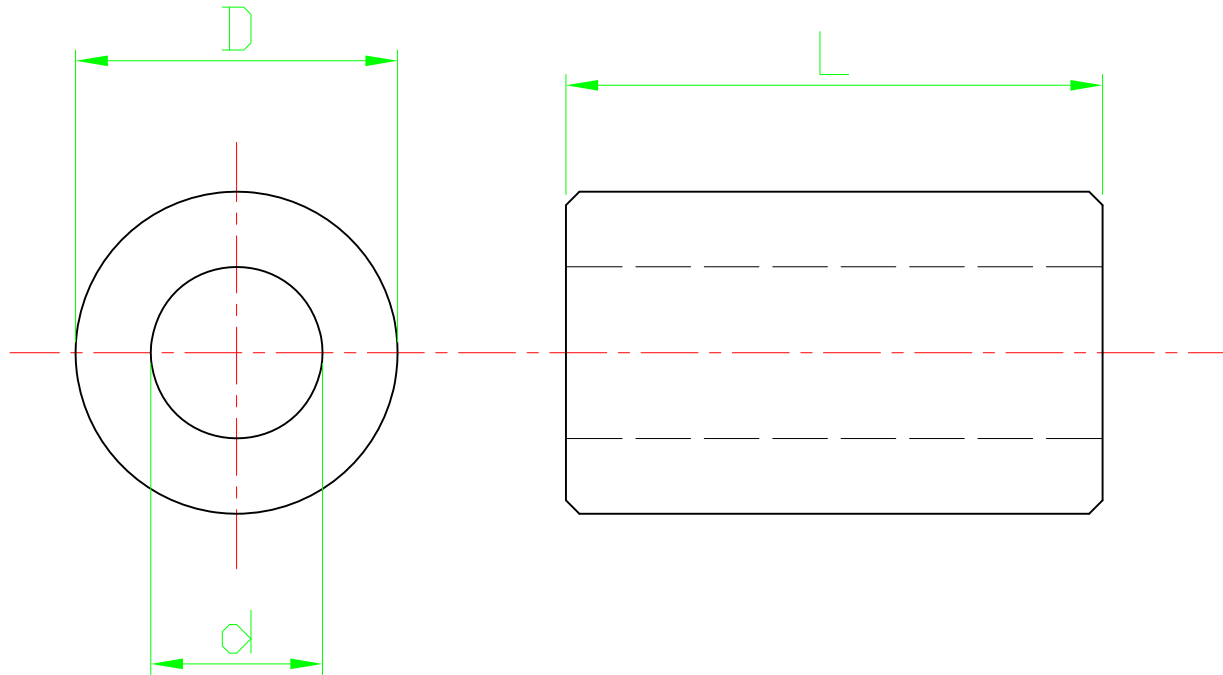


RoHS compliant



For M3-screws  
PU=100 pcs

Option	Dimensions		
	L	D	d
A	5	6	3.2
B	8	6	3.2
C	10	6	3.2
D	12	6	3.2
E	15	6	3.2
G	20	6	3.2

Scale	1:1					Date	Name	Customer-No.
TOLERANCE					Drawn	20.08.2009	Dean	ASSMANN WSW-No. <b>V6254x</b>
X.	±X				Approved	10.03.2010	Andy	
X.X	±X							
X.XX	±X							Drawing-No.
DIM	TOL	②	Modify drawing layout	10.03.2010	Dean			ASS 0918 HS
X.°	±X°	①	Drawn	20.08.2009	Dean			rev02
X.X°	±X°							Replace
Angle	TOL	Id.	Modification	Date	Name			Sheet



ASS 0918 HS

rev02

Replace

Sheet