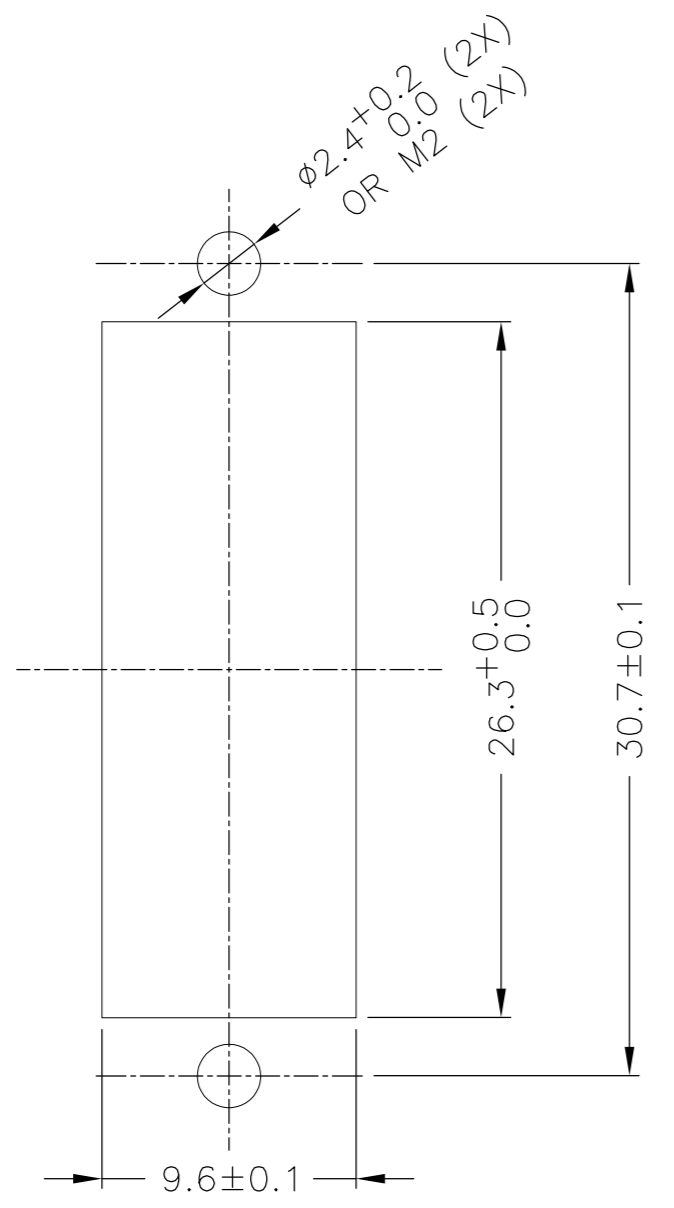
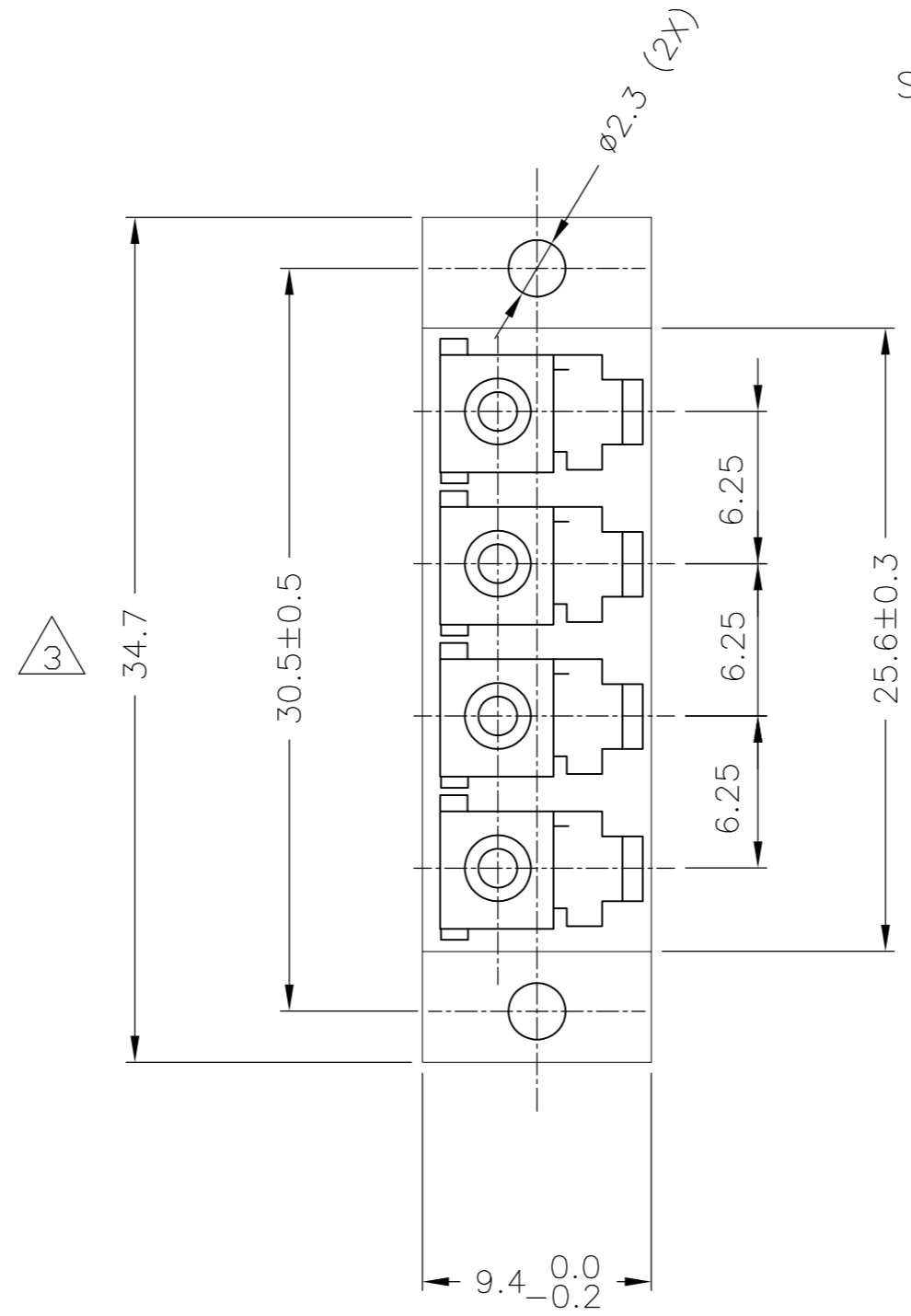


THIS DRAWING IS UNPUBLISHED. RELEASED FOR PUBLICATION
 © COPYRIGHT - By - ALL RIGHTS RESERVED.

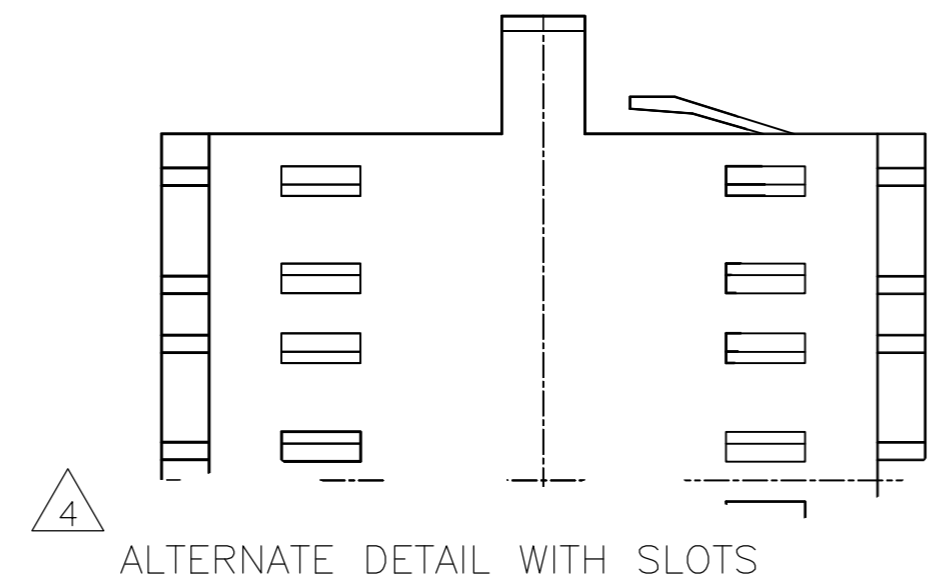
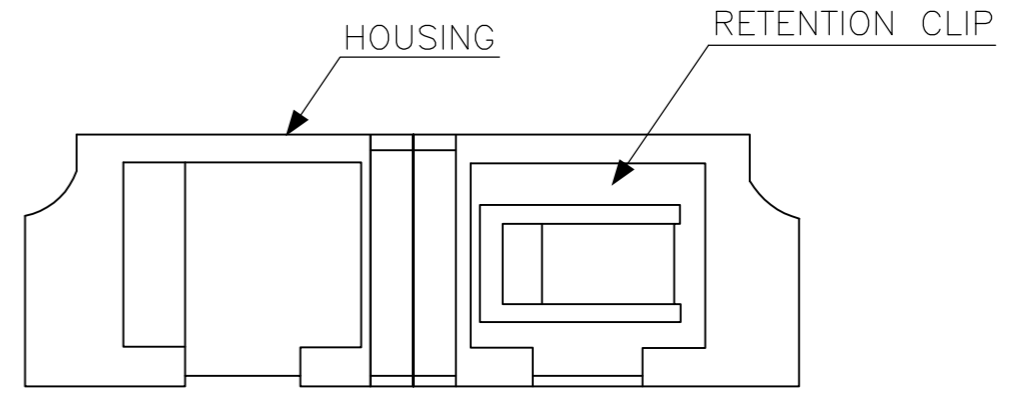
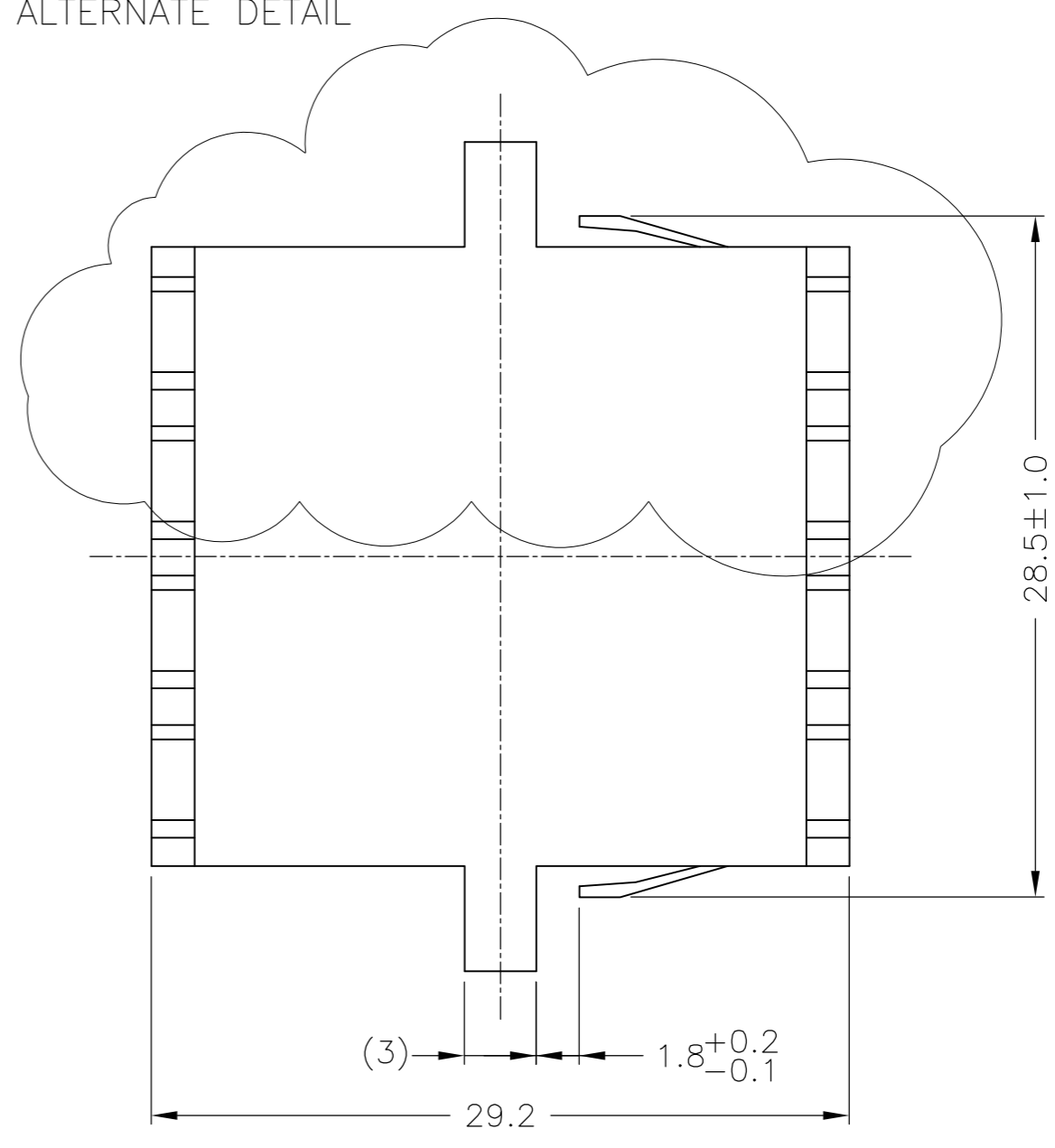
| LOC | | DIST | | REVISIONS | | | |
|-----|-----|-------------|---------------------------|-----------|------|-----|--|
| P | LTR | DESCRIPTION | DATE | DWN | APVD | | |
| H | - | E1 | REVISED PER ECO-11-005294 | 02APR11 | RK | HMR | |



RECOMMENDED PANEL CUT-OUT
 MAX PANEL THICKNESS 1.7
 (INFORMATIVE REFERENCE)



SEE ALTERNATE DETAIL



NOTES:

- 1 MATERIAL:
 HOUSING: THERMOPLASTIC, UL 94-V0
 ALIGNMENT SLEEVES: SEE TABLE
 RETENTION CLIP: SST
- 2 DUST PLUGS ARE SUPPLIED, NOT SHOWN.
- 3 FLANGELESS VERSION HAS AN OVERALL WIDTH OF 28.5 ±0.5mm
- 4 ALTERNATE DETAIL WITH SLOTS

| CERAMIC | AQUA | FLANGELESS | 1-1695790-1 |
|--------------|---------------|-------------|-------------|
| CERAMIC | AQUA | FLANGED | 1-1695790-0 |
| METAL | AQUA | FLANGED | 1695790-9 |
| CERAMIC | BEIGE | FLANGED | 1695790-8 |
| METAL | BEIGE | FLANGELESS | 1695790-7 |
| CERAMIC | GREEN | FLANGED | 1695790-6 |
| METAL | BEIGE | FLANGED | 1695790-5 |
| CERAMIC | BLUE | FLANGED | 1695790-4 |
| CERAMIC | GREEN | FLANGELESS | 1695790-3 |
| CERAMIC | BEIGE | FLANGELESS | 1695790-2 |
| CERAMIC | BLUE | FLANGELESS | 1695790-1 |
| SLEEVE MAT'L | HOUSING COLOR | DESCRIPTION | PART NUMBER |

THIS DRAWING IS A CONTROLLED DOCUMENT. DWN 22 SEP 05
 CHK 30 JUN 06
 APVD 30 JUN 06
 NAME: GIRIYAPPA M, A. HENGELMOLEN, A. HENGELMOLEN

TE Connectivity

FOAC LC QUAD ADAPTER

SIZE: A2 CAGE CODE: 00779 DRAWING NO: 1695790 RESTRICTED TO: -

CUSTOMER DRAWING SCALE: NTS SHEET: 1 OF 1 REV: E1