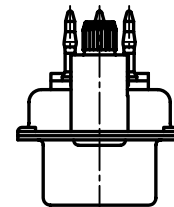
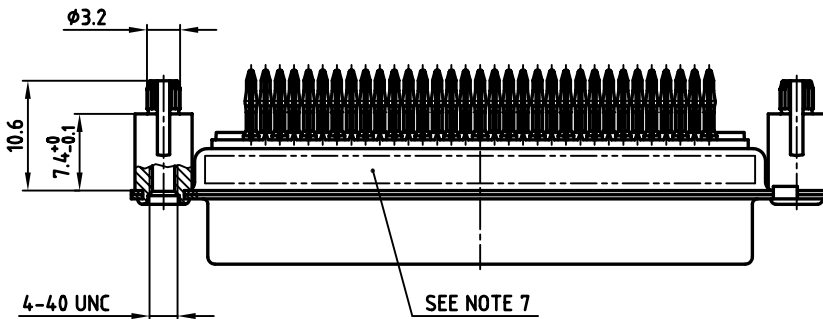
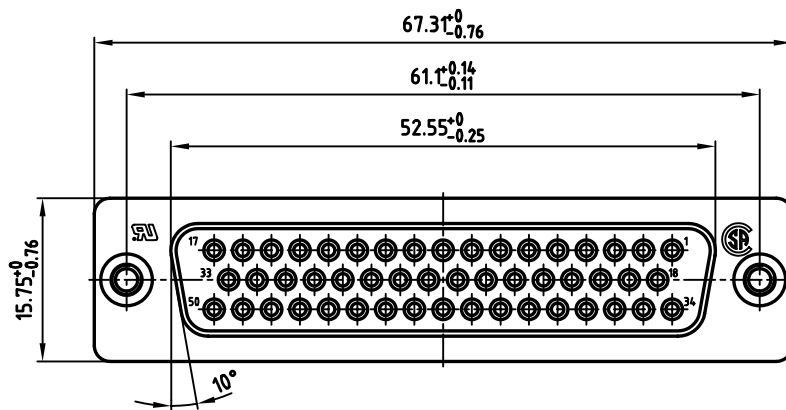
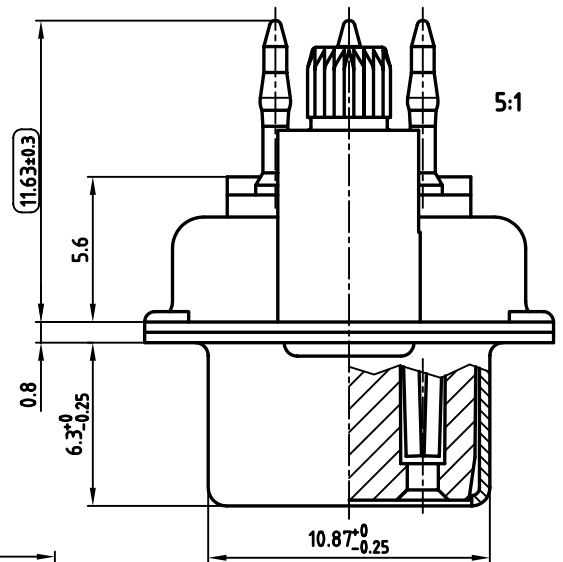


used for: D-SUB



NOTES:

1. METALSHELLS: STEEL; min. 320µ" TIN
2. INSULATORS: PBT GF UL 94 V-0, BLACK
3. PRESS-FIT CONTACTS: COPPER ALLOY
PLATING-MATING SIDE+REAR SIDE:
8µ" HARD GOLD OVER min. 50µ" NICKEL
P.C.B. THICKNESS: min. 1.6mm
4. PUSH IN PIN: COPPER ALLOY;min. 200µ" TIN over 80µ" NICKEL
5. P.C.B. HOLE DRILLINGS ON SHEET 2
6. MAXIMUM TORQUE VALUE FOR THREAD: 6" LBS
7. CONNECTOR IS PART MARKED: DSS5XSFAA54X CONEC ABC
8. = CHECK DIMENSION

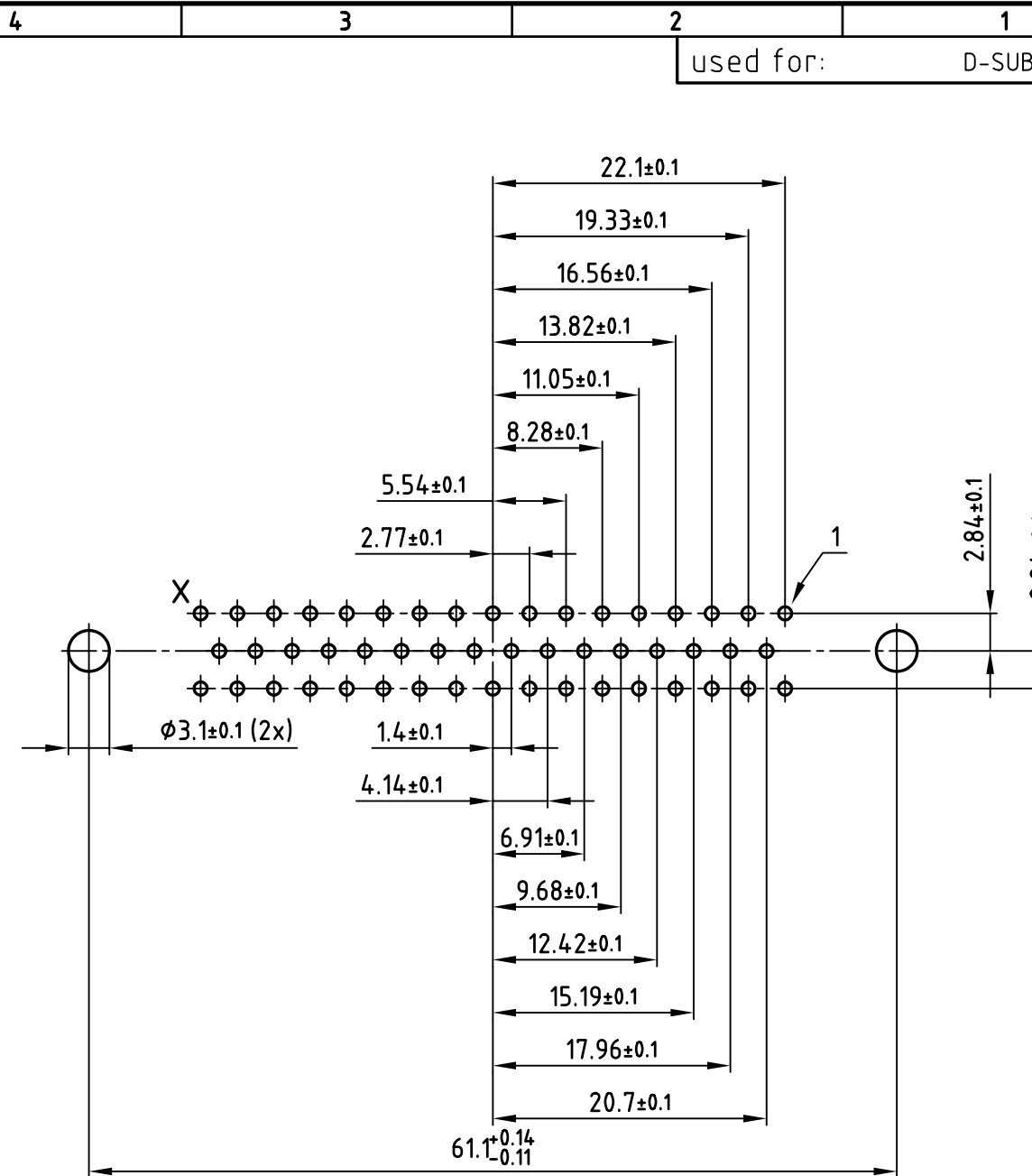
APPROVAL # FREIGABE # DEBLOCAGE # AUTORIZACION # APPROVAL	
CUSTOMER APPROVAL DATE:	
NAME:	TITLE:
COMPANY NAME:	
APPROVAL # FREIGABE # DEBLOCAGE # AUTORIZACION # APPROVAL	

THIS DRAWING MAY NOT BE COPIED OR REPRODUCED IN ANY WAY, AND MAY NOT BE PASSED ON TO A THIRD PARTY, WITHOUT WRITTEN PERMISSION. OWNERSHIP AND COPYRIGHT OF CONEC GmbH DO NOT ALTER CAD DRAWING BY HAND

rev.	description	date	name

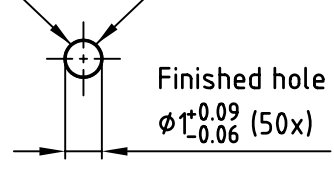
tolerance		
2005	date	
drawn	19.09.	name
appd.	19.09.	Mickenbecker
norm		
d-old		

scale:	2:1 (5:1)	
material:	SEE NOTES	
title:		
D-SUB FEMALE 50pos. PRESSFIT TYPE with push in pin		
dwg no:	AutoCAD 2004	DIN-A
16K1A14.95		3
part no: DSS5XSFAA54X		sh:1/2



used for: D-SUB

Tin thickness 15µm (600µ") maximum X 5:1
 Copper thickness 25µm (1000µ") minimum



APPROVAL # FREIGABE # DEBLOCAGE # AUTORIZACION # APPROVAL

CUSTOMER APPROVAL DATE:

NAME: TITLE:

COMPANY NAME:

APPROVAL # FREIGABE # DEBLOCAGE # AUTORIZACION # APPROVAL

THIS DRAWING MAY NOT BE COPIED OR REPRODUCED IN ANY WAY, AND MAY NOT BE PASSED ON TO A THIRD PARTY WITHOUT WRITTEN PERMISSION.
 OWNERSHIP AND COPYRIGHT OF CONEC GmbH
 DO NOT ALTER CAD DRAWING BY HAND

tolerance		dim. in mm	
2005	date	name	
drawn	19.09.	Lehmenkühler	
appd.	19.09.	Mickenbecker	
norm			
d-old			
rev.	description	date	name



scale:	2:1 (5:1)	
material:	SEE SHEET 1	
title:	P.C.B. HOLE DRILLINGS D-SUB FEMALE 50pos. PRESS-FIT TYPE with push in pin	
dwg no:	AutoCAD 2004	DIN-A
	16K1A1495	4
		sh:2/2
part no:	SEE SHEET 1	