



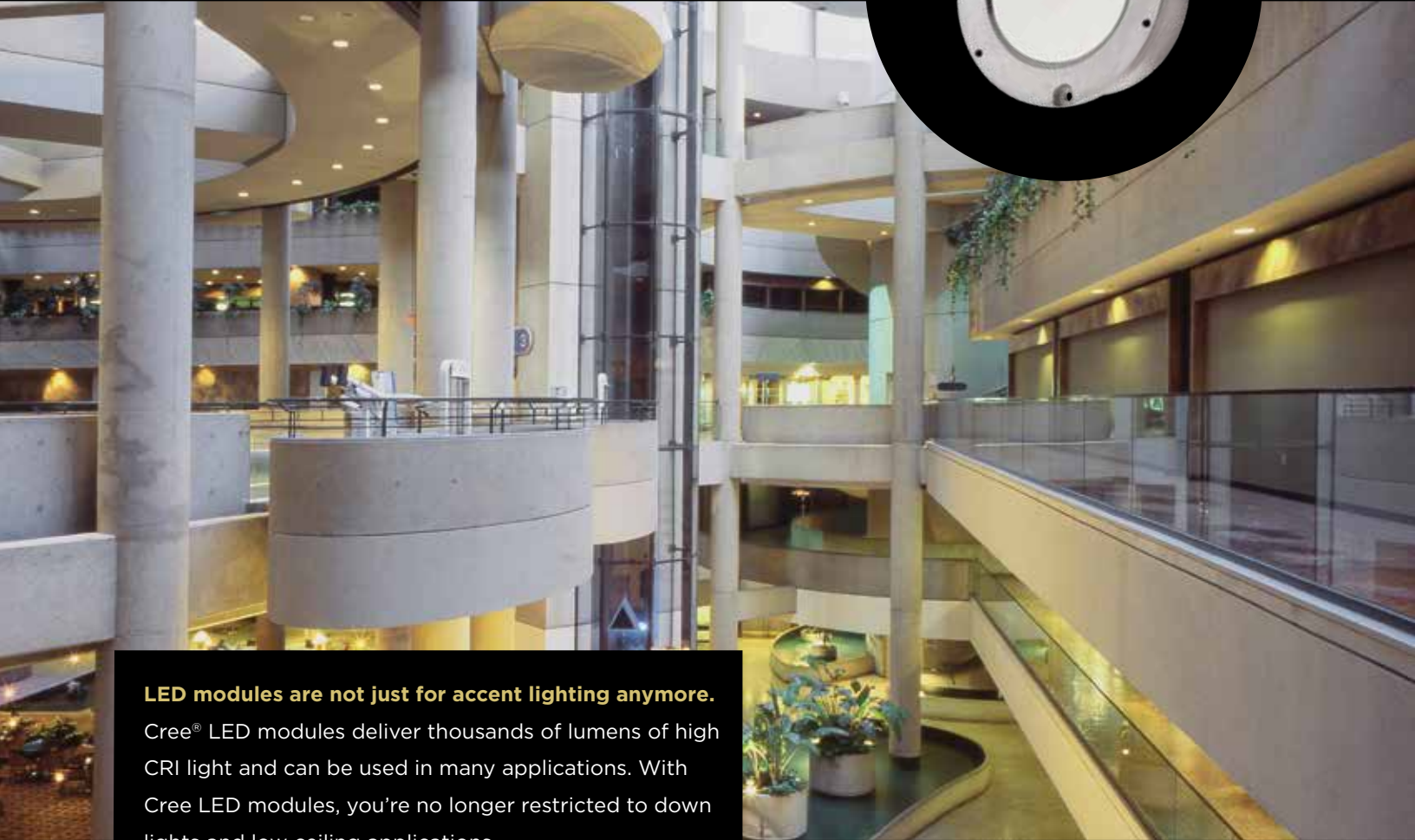
# one.

ONE LED MODULE. MANY APPLICATIONS.

**CREE** 

LED MODULE  
SPECIFIER GUIDE

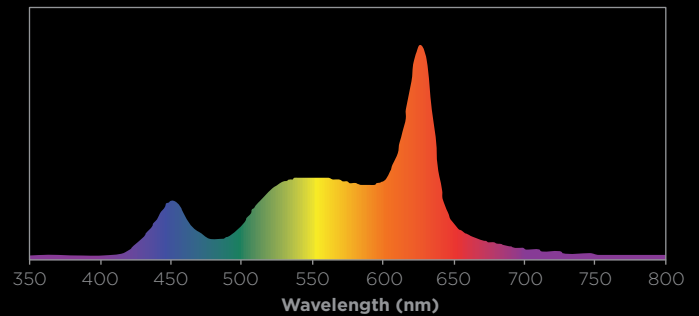
# One light source



**LED modules are not just for accent lighting anymore.**

Cree® LED modules deliver thousands of lumens of high CRI light and can be used in many applications. With Cree LED modules, you're no longer restricted to down lights and low ceiling applications.

Using our lighting-class LEDs, we've optimized a family of high-efficiency LED modules to beautifully light nearly any area, from an intimate nook to a soaring atrium. Cree LED modules provide consistent color and quality of light throughout your entire space to put an end to the color consistency and re-lamping problems that can happen when you mix lighting technologies.



| CCT   | CRI | R1 | R2 | R3 | R4 | R5 | R6 | R7 | R8 | R9 | R10 | R11 | R12 | R13 | R14 |
|-------|-----|----|----|----|----|----|----|----|----|----|-----|-----|-----|-----|-----|
|       |     |    |    |    |    |    |    |    |    |    |     |     |     |     |     |
| 3000K | 92  | 96 | 95 | 81 | 89 | 97 | 94 | 93 | 95 | 93 | 81  | 89  | 76  | 99  | 86  |
| 4000K | 93  | 95 | 93 | 87 | 93 | 91 | 89 | 98 | 95 | 83 | 79  | 90  | 63  | 94  | 91  |

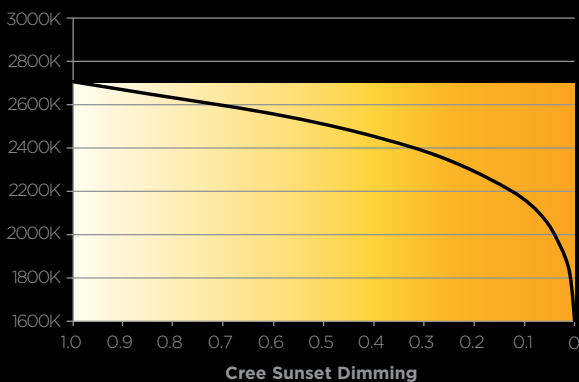
Listed CRI values are representative values for Cree TrueWhite® Technology LED Modules. These values are provided for information only and are not a specification. For more information, please see the product specifications on [cree.com](http://cree.com).

# Two dimming choices



## Set the mood with Cree dimming technology.

Cree LED modules provide a choice of dimming options, while reducing the lighting power load by 80%. They're compatible with TRIAC and other widely used lighting control systems so there's no rewiring needed to give any environment additional ambience.



### **CREE SUNSET DIMMING TECHNOLOGY**

Sunset dimming provides warm, rich light from 2700K down to 1800K along the black body line to create an intimate atmosphere.

### **CREE WHITELIGHT DIMMING TECHNOLOGY**

WhiteLight dimming provides consistent color across the entire dimming range to keep colors natural.

# One design for many applications.

Residential, restaurants and retail; shopping malls and showrooms; hospitals and hospitality, atriums and airports—no matter what your space, Cree LED modules can significantly reduce the Lighting Power Density (LPD) without compromising quality of light. *(See the energy savings table on the next page.)*

Specify Cree LED modules with the lumen output you need to simplify your design process and achieve consistent, full-spectrum lighting for your space.

30-50' CEILINGS

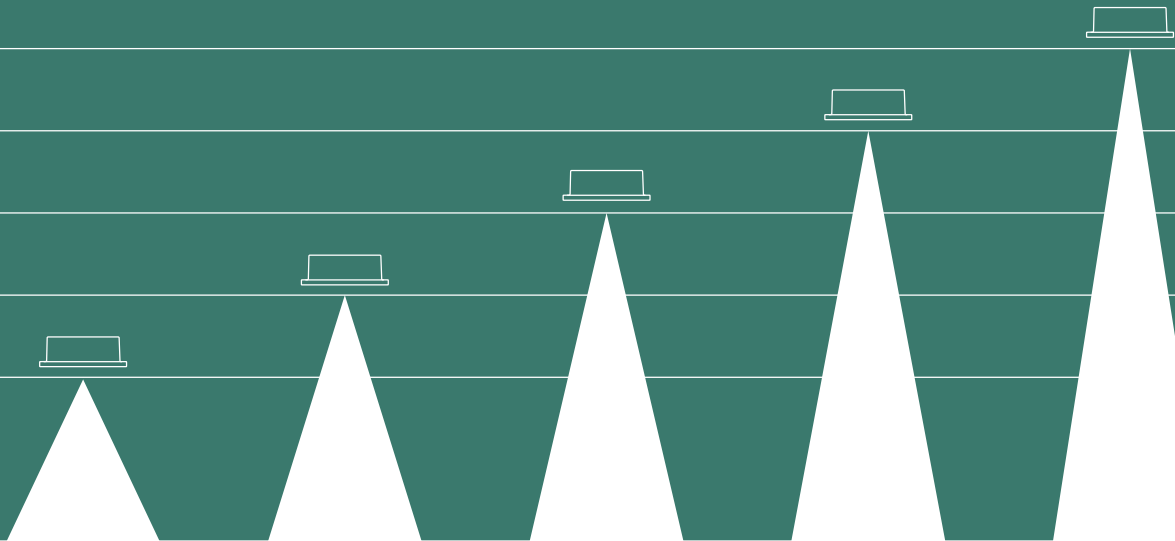
20-40' CEILINGS

15-40' CEILINGS

15-30' CEILINGS

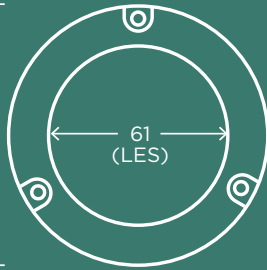
10-20' CEILINGS

8-12' CEILINGS





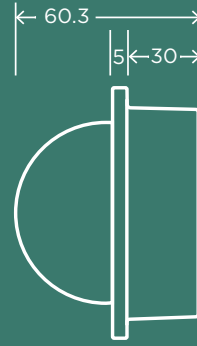
DIMENSIONS (MM)



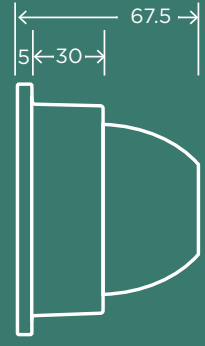
LMH2 & LMR2 (FRONT)



LMH2 FLAT (SIDE)



LMH2 DOME (SIDE)



LMR2 (SIDE)



| LMH2*              | INCANDESCENT | QUARTZ & HALOGEN | CFL*           | CMH*  |
|--------------------|--------------|------------------|----------------|-------|
| 8000 LM**<br>100 W | ---          | 500 W            | ---            | 150 W |
| 6000 LM<br>71 W    | ---          | 400 W            | ---            | 100 W |
| 4000 LM<br>38 W    | ---          | 250 W            | 57 W<br>2x32 W | 70 W  |
| 3000 LM<br>31 W    | ---          | ---              | 42 W<br>2x26 W | 50 W  |
| 2000 LM<br>21 W    | 250 W        | ---              | 32 W           | 39 W  |
| 1250 LM<br>13 W    | <150 W       | ---              | <26 W          | 20 W  |
| 850 LM***<br>9 W   | <150 W       | ---              | <26 W          | 20 W  |

\* Excludes driver/ballast losses  
 \*\* Availability: December 2013  
 \*\*\* LMR2 also available in 650 lm and 750 lm.

Potential energy savings with Cree LED modules

- 82%  
Incandescent, Halogen & Quartz
- 50%  
CMH
- 40%  
CFL

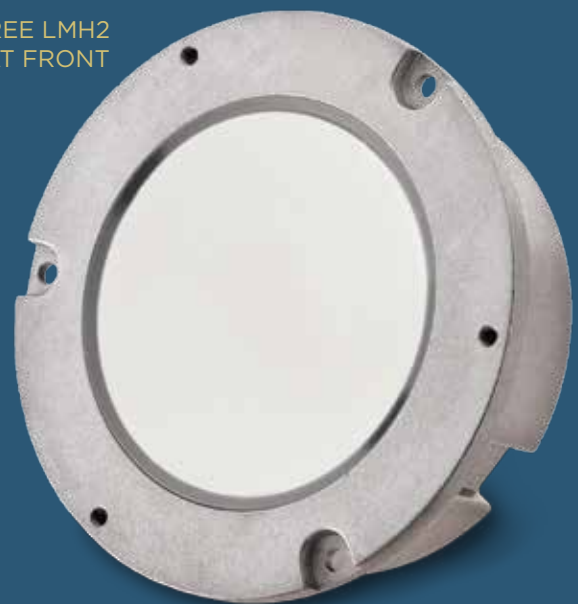


# One partner with proven, industry-leading technology

Cree LED modules are built from the ground up using our lighting-class LEDs to deliver more lumens per watt than any other lighting technology. Our LED modules are built on LED technology that has racked up millions of hours of illumination in the real world. Cree LED modules are built to last and are covered by our five-year warranty, even if used with third-party drivers. Don't just take our word for it—we've tested it.



CREE LMH2  
FLAT FRONT



Cree LED modules are the right light and size for all your lighting applications.

## DRIVER SUPPORT & COMPATIBILITY

Cree is the only LED module supplier to test third-party driver compatibility. That's how we can offer a light source warranty, even if the driver isn't ours.

Cree compatible drivers can add lighting control support including DALI, 0/1-10V, TRIAC and DMX.

## TWO DRIVER OPTIONS

Cree LMH2 LED modules come with a detached driver for flexible installation.

The Cree LMR2 LED module uses an integrated driver for a simple "all-in-one" design.



## SPECIFIABLE ATTRIBUTES

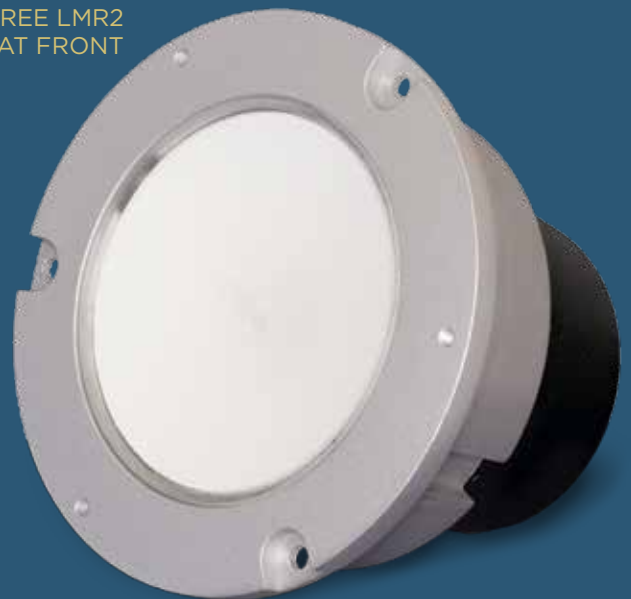
Cree LED modules enable lighting designers to specify the following:

- CCT: 2700K, 3000K, 3500K, or 4000K
- Consistent power and light output across all CCTs
- CRI: 90 minimum
- Color Consistency: 3-step McAdam ellipse
- Appearance: White when off
- Dimming Compatibility: TRIAC, 0/1-10V, DMX, DALI, and/or DALI Touch
- Sunset Dimming: dims down to 1800K, maintaining >80 CRI over entire dimming range
- Test report confirming compatibility between LED light source and driver

CREE LMH2  
DOME FRONT



CREE LMR2  
FLAT FRONT



### BEAUTIFUL ON OR OFF

No flicker, no buzz—just instant-on high CRI light from the industry's highest performing LEDs.

The light source has a clean, white appearance when powered off that doesn't detract from your design.

### COMPACT AND EFFICIENT

Cree LED modules have aluminum housings to provide built-in thermal management matched with a compact design to fit a variety of fixture designs.





LMH2  
Flat & Dome



LMR2

| PRODUCT             | DIMMING    | LUMENS                              | CCT                              | CRI                                  | DRIVER   |
|---------------------|------------|-------------------------------------|----------------------------------|--------------------------------------|--|
| LMH2<br>Flat & Dome | WhiteLight | 850<br>1250<br>2000<br>3000<br>4000 | 4000K<br>3500K<br>3000K<br>2700K | 92                                   | Detached<br>driver for<br>third-party<br>flexibility |
|                     |            | 6000<br>8000*                       | 4000K<br>3500K<br>3000K          |                                      |  |
|                     | Sunset     | 850<br>1250<br>2000<br>3000         | 2700K                            |                                      |  |
| LMR2                | WhiteLight | 650<br>750                          | 4000K<br>3500K<br>3000K<br>2700K | 92<br>(650 lm)<br><br>82<br>(750 lm) | Integrated<br>driver for<br>ease of use              |

\* Availability: December 2013

# The power of **one.**

**One light source. One design. One partner.** By specifying Cree LED modules you'll get beautiful, consistent light throughout your space, backed by a five-year warranty from the industry leader in LED lighting.

**Register for a Cree Sunset dimming demonstration unit at [cree.com/powerofone](http://cree.com/powerofone).**

