

Panel mounting frames - VS-A-S-F-IP67 - 1654581

Please be informed that the data shown in this PDF Document is generated from our Online Catalog. Please find the complete data in the user's documentation. Our General Terms of Use for Downloads are valid (<http://download.phoenixcontact.com>)



RJ45 panel mounting frame, IP67, irradiated for welding applications, for Freenet system, for round panel cutout, with grommet, without mounting screws



Key commercial data

Packing unit	1 PCE
Minimum order quantity	5 PCE
GTIN	 4 017918 970796
Custom tariff number	85389099
Country of origin	GERMANY

Technical data

Mechanical characteristics

Insertion/withdrawal cycles	≥ 1000
Color	black
Ambient temperature (operation)	-40 °C ... 80 °C

Material data

Inflammability class according to UL 94	HB
Housing material	PA
Sealing material	NBR
Seal material	NBR
Degree of protection	IP67

Electrical characteristics

Pollution degree	2
------------------	---

Panel mounting frames - VS-A-S-F-IP67 - 1654581

Classifications

ETIM

ETIM 2.0	EC000764
ETIM 3.0	EC001121
ETIM 4.0	EC001121
ETIM 5.0	EC002310

UNSPSC

UNSPSC 11	31261501
UNSPSC 12.01	31261501
UNSPSC 13.2	31261501
UNSPSC 6.01	31261501
UNSPSC 7.0901	31261501

eCl@ss

eCl@ss 4.0	27140816
eCl@ss 4.1	27260701
eCl@ss 5.0	27260701
eCl@ss 5.1	27260701
eCl@ss 6.0	27260705
eCl@ss 7.0	27440309

Accessories

Accessories

Female insert

RJ45 female insert - VS-08-BU-RJ45-5-F/BU - 1652952



RJ45 socket insert, for the Freenet system, CAT5e, 8-pos., shielded, socket on socket

RJ45 female insert - VS-08-BU-RJ45-5-F/PK - 1652936



RJ45 socket insert, for the Freenet system, CAT5e, 8-pos., shielded, with cable connection (IDC fast connection), for solid wires AWG 24 ... 22

Panel mounting frames - VS-A-S-F-IP67 - 1654581

Accessories

RJ45 female insert - VS-08-BU-RJ45-6-F/PK - 1652949



RJ45 socket insert, for the Freenet system, CAT6, 8-pos., shielded, with cable connection (IDC fast connection), for litz and solid wires AWG 24 ... 22

Protective covers

Protective covers - VS-08-SD-S - 1652871



Protective cover, IP67, tall design, irradiated for welding applications

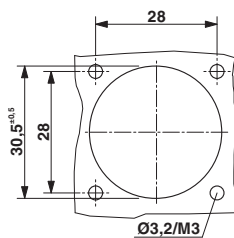
Protective covers - VS-08-SD-F-S - 1653139



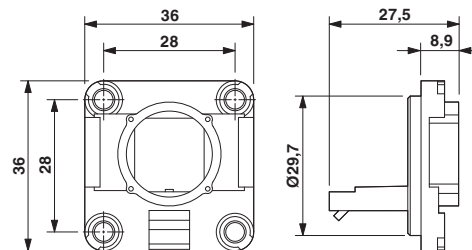
Protective cover, IP67, irradiated for welding applications, flat design, to cover the contact insert in the panel mounting frame

Drawings

Dimensioned drawing



Dimensioned drawing



RJ45 panel mounting frame, IP67

Panel cutout

