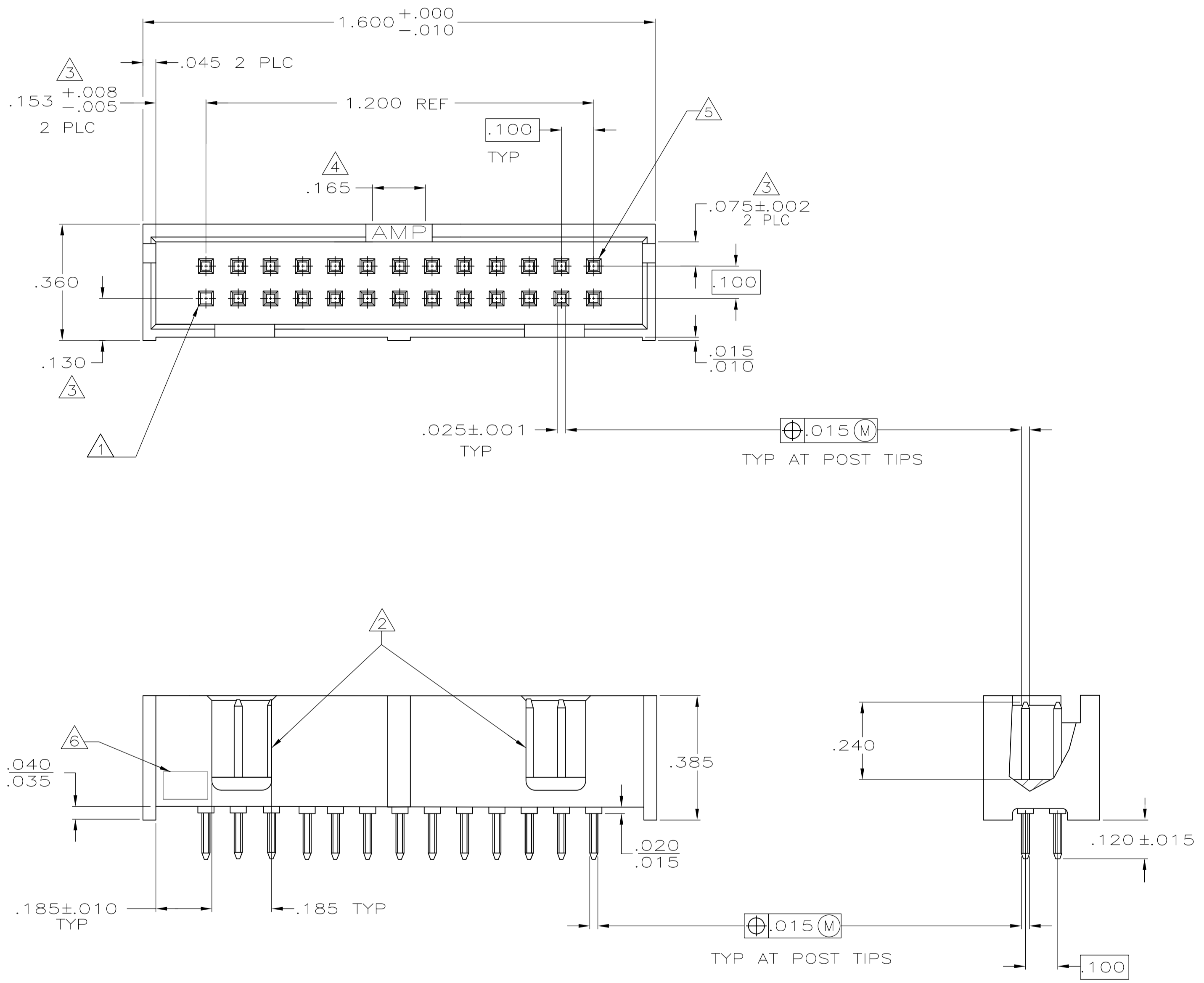
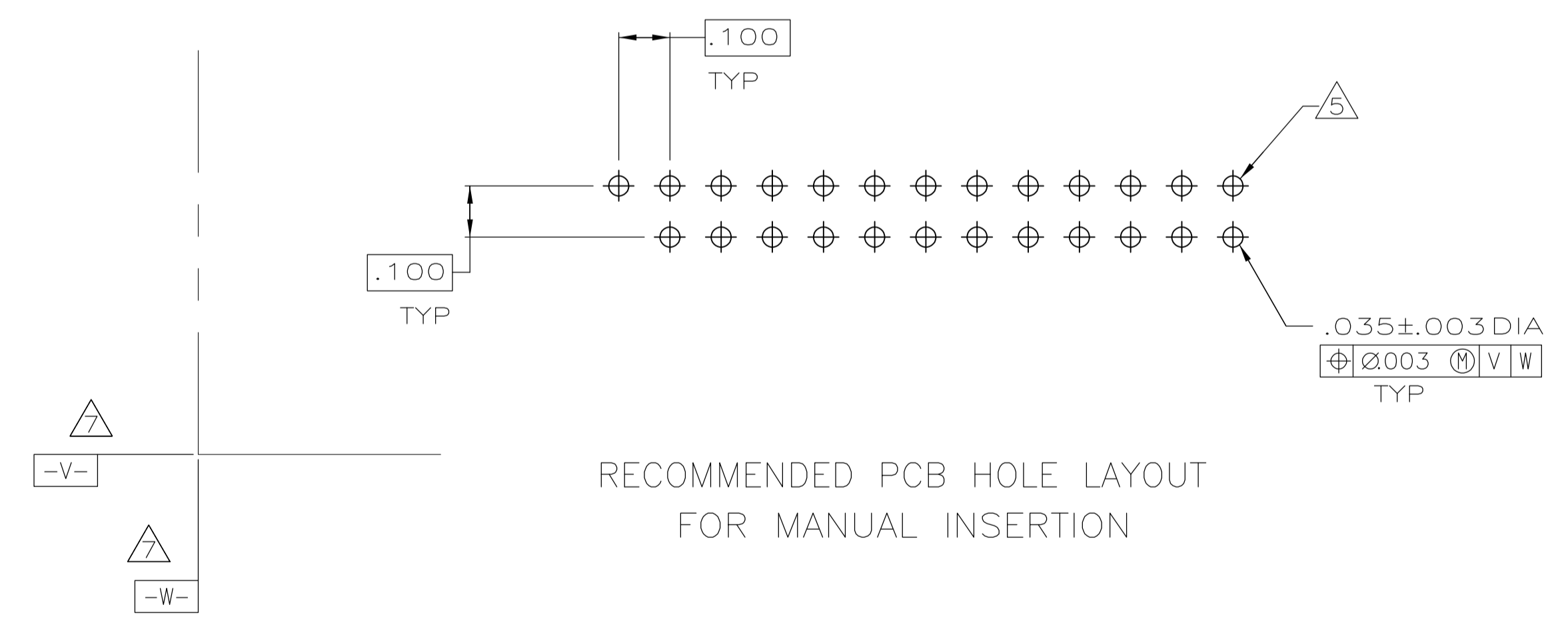


LOC		DIST		REVISIONS			
P	LTR	DESCRIPTION	DATE	DMN	APVD		
D		REVISED PER ECO-11-003735	16MAR2011	CJV	SLB		



- 1 POST OMITTED IN POSITION NO. 26.
- 2 DOUBLE BAR POLARIZATION.
- 3 THE NOTED DIMENSIONS APPLY AT THE INTERSECTION OF THE POST AND HOUSING.
- 4 CENTER POLARIZATION SLOT.
- 5 NUMBER 1 POSITION.
- 6 OPTIONAL AMP IDENTIFICATION NUMBER (DATE CODE). LOCATION APPROXIMATELY WHERE SHOWN.
- 7 DATUMS -V- AND -W- TO BE ESTABLISHED BY CUSTOMER.
- 8 POST: BRASS.
HOUSING: GLASS FILLED NYLON OR PBT, BLACK, UL94V-0, BLACK.
- 9 POSTS: GOLD FLASH OVER PALLADIUM-NICKEL PLATE, .000015 MIN TOTAL ON THE MATING SURFACES, .000100 MIN TIN-LEAD PLATE ON THE SOLDER-TAILS, .000050 MIN NICKEL UNDERPLATE ON THE ENTIRE POST.
-OR-
.000015 MIN GOLD PLATE ON THE MATING SURFACES, .000100 MIN TIN-LEAD PLATE ON THE SOLDER-TAILS, .000050 MIN NICKEL UNDERPLATE ON THE ENTIRE POST.



RECOMMENDED PCB HOLE LAYOUT FOR MANUAL INSERTION

26	1364553-1
NO OF POSN	PART NUMBER

THIS DRAWING IS A CONTROLLED DOCUMENT.		DIN J.C. BAKER 04-AUG-00		Tyco Electronics Corporation Harrisburg, PA 17105-3608	
DIMENSIONS: INCHES		TOLERANCES UNLESS OTHERWISE SPECIFIED:		APVD S.L. BOLASH 04-AUG-00	
0 PLC ± -		1 PLC ± -		NAME	
2 PLC ± .005		3 PLC ± -		PRODUCT SPEC	
4 PLC ± -		ANGLES ± -		108-40018	
MATERIAL		FINISH		APPLICATION SPEC	
WEIGHT		SIZE		CASE CODE	
CUSTOMER DRAWING		DRAWING NO		RESTRICTED TO	
SCALE 4:1		SHEET 1 OF 1		REV D	