

PCM-9363 Intel® Atom™ N455/D525 3.5" SBC, DDR3, 24-bit LVDS, CRT or HDMI, 2 Giga LANs, Mini PCIe, 3 COMs

Startup Manual

Packing List

Before you begin installing your card, please make sure that the following items have been shipped:

1. 1 PCM-9363 SBC
2. 1 Startup Manual
3. 1 Utility CD
4. 1 Mini jumper pack p/n: 9689000002
5. 1 SATA cable p/n: 1700008941
6. 1 Keyboard/Mouse cable p/n: 1703060191
7. 1 Audio cable p/n: 1700018839
8. 1 COM2 cable p/n: 1701140201
9. 2 USB 2 port cables p/n: 1703100121
10. 1 SATA power cable p/n: 1703150102
11. 1 LPT cable p/n: **1700260250**
12. 1 COM port cable p/n: 1700100250

If any of these items are missing or damaged, please contact your distributor or sales representative immediately.

Note 1: For detailed contents of PCM-9363, please refer to information on the enclosed CD-ROM (in PDF format).

Note 2: Acrobat Reader is required to view any PDF file. Acrobat Reader can be downloaded at: www.adobe.com/Products/acrobat/readstep2.html (Acrobat is a trademark of Adobe)

For more information on this and other Advantech products, please visit our website at:

<http://www.advantech.com>

<http://www.advantech.com/eplatform>

For technical support and service, please visit our support website at:

<http://service.advantech.com.tw/support/>

This manual is for the PCM-9363 Series Rev. A1

Part No. 2006936300
Printed in China

1st Edition
December 2010

Specifications

General

- **CPU:** Intel® Atom™ Processor N455 1.66 GHz / D525 1.8 GHz
- **System Chipset:** Intel® Atom™ N455/D525+ICH8M
- **System Memory:** DDR3 800 MHz up to 2 GB for N455, and D525 up to 4 GB
- **BIOS:** AMI 16 Mbit Flash BIOS
- **Watchdog Timer:** 255 level interval timer
- **Expansion Interface:** Mini-PCIe
- **Battery:** Lithium 3 V/220 mAh
- **SATA interface:** Two SATA ports supporting 300 MB/s
- **Keyboard/mouse connector:** Internal pin-header supports KB/mouse use
- **USB:** Six USB 2.0 compliant universal serial bus ports
- **Audio:** High Definition audio (HD), line-in, line-out, mic-in
- **GPIO:** 8-bit general purpose Input/Output

CompactFlash® Card

- Supports one 50-pin socket for CFC type I/II

VGA/LVDS Interface

- **Chipset:** Embedded Gen3.5+ GFX Core
- **Memory Size:** Up to 224 MB of dynamic video memory allocation
- **Resolution:**
 - CRT: Intel Atom N455 up to 1400 x 1050 (SXGA)
Intel Atom D525 up to 2048 x 1536
 - LVDS: Single channel 24-bit LVDS up to WXGA
1366 x 768
- **LVDS LCD:**
 - Support 18 or 24-bit LVDS LCD
- **Dual Display:** CRT+LVDS

Ethernet Interface

- LAN1 Intel® 82567V Giga LAN,
LAN2 Intel® **82583V Giga LAN**
- **Ethernet interface:** IEEE 802.3, IEEE 802.3u, IEEE 802.3x, IEEE 8023y, IEEE802.ab (100 Mbps) protocol compatible

Mechanical and Environmental

- **Dimensions:** 146 x 102 mm (5.7" x 4")
Mechanical Drawings are on pages 5 and 6.
- **Power Supply Type:** AT/ATX
- **Power Requirement:** Single 12 V input

Caution

The computer is provided with a battery-powered real-time clock circuit. There is a danger of explosion if battery is incorrectly replaced. Replace only with same or equivalent type recommended by the manufacturer. Discard used batteries according to manufacturer's instructions.

Specifications

- **Power Consumption:**

- Typical in XP mode:

N455/DDR3 1 GB : 0.74 A, 12 V

D525/DDR3 1 GB : 0.86 A, 12 V

- Max in HCT:

N455/DDR3 1GB : 0.86 A, 12 V

D525/DDR3 1GB : 1.18 A, 12 V

- **Operating Temperature:** 0 ~ 60° C (32 ~ 140° F)
- **Weight:** 0.85 kg (reference weight of total package)

Jumpers and Connectors

The board has a number of jumpers that allow you to configure your system to suit your application. The table below lists the function of each of the jumpers and connectors.

Jumpers	
Label	Function
J2	COM2 Setting
J3	AT / ATX Power SEL
J4	Clear CMOS
J5	Panel Voltage SEL

Jumpers and Connectors

Connectors

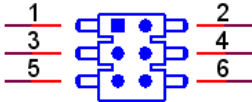
Label	Function
CN1	Audio
CN2	SATA
CN3	SATA
CN4	GPIO
CN5	HDD & PWR LED
CN6	12 V Power Input
CN8	COM3
CN10	PS2
CN11	SMBus
CN12	COM2
CN13	Inverter Power Output
CN14	Internal USB
CN15	Internal USB
CN16	18 or 24-bit LVDS Panel
CN17	Single LAN (Optional to replace dual LAN)
CN18	LAN1
CN19	LAN2
CN20	Power Switch (Low Active)
CN21	LPT
CN22	HDMI (Optional)
CN23	Reset
CN24	External USB
CN25	External USB
CN26	COM1
CN27	VGA
CN28	Mini PCIe lock
CN29	Mini PCIe slot
CN30	DDR3 SODIMM
CN31	BIOS Socket
CN32	CF
CN36	SATA Power

Jumpers and Connectors

Jumpers Settings

J2	COM2 Setting
Part Number	1653003260
Footprint	HD_3x2P_79
Description	PIN HEADER 3*2P 180D(M) 2.0 mm SMD SQUARE PIN
Setting	Function
(1-2)*	RS232
(3-4)	RS485
(5-6)	RS422

*: default



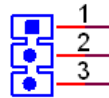
J3	AT / ATX Power SEL
Part Number	1653002101
Footprint	HD_2x1P_79_D
Description	PIN HEADER 2*1P 180D(M)SQUARE 2.0 mm DIP W/O Pb
Setting	Function
(1-2)*	AT Power SEL
EMPTY	ATX Power

*: default



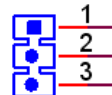
J4	Clear CMOS
Part Number	1653003101
Footprint	HD_3x1P_79_D
Description	PIN HEADER 3*1P 180D(M) 2.0 mm DIP SQUARE W/O Pb
Setting	Function
(1-2)*	Normal
(2-3)	Clear CMOS

*: default



J5	PAN VOL SEL
Part Number	1653003101
Footprint	HD_3x1P_79_D
Description	PIN HEADER 3*1P 180D(M) 2.0 mm DIP SQUARE W/O Pb
Setting	Function
(1-2)	+5V
(2-3)*	+3V

*: default



PCM-9363 Jumpers and Connectors

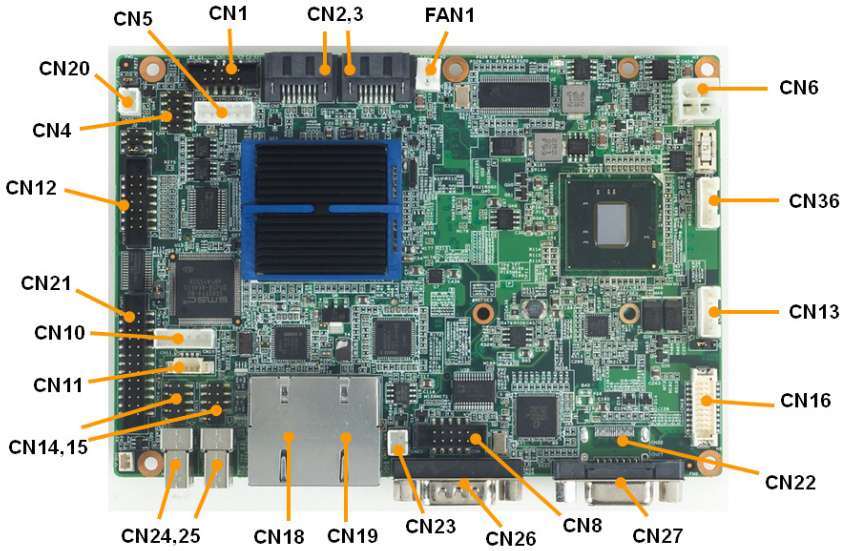


Figure 1: PCM-9363 Jumpers and Connectors (Component Side)

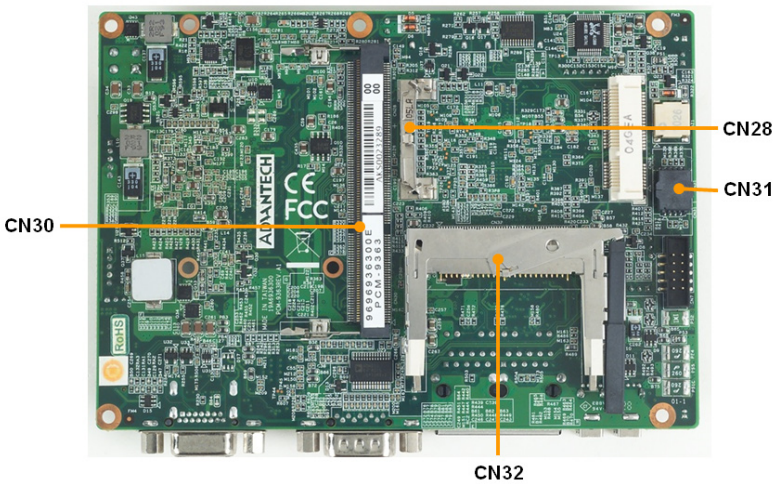


Figure 2: PCM-9363 Jumpers and Connectors (Solder Side)

PCM-9363 Mechanical Drawing

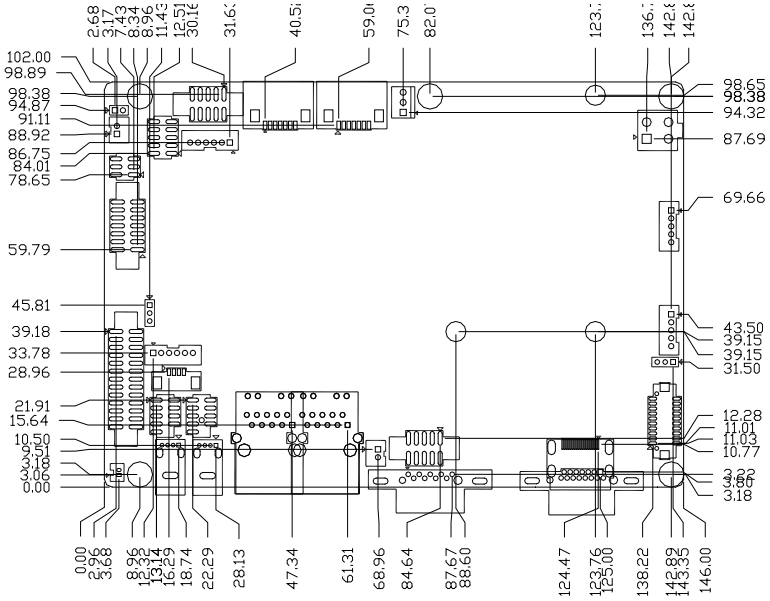


Figure 3: PCM-9363 Mechanical Drawing (Component Side)

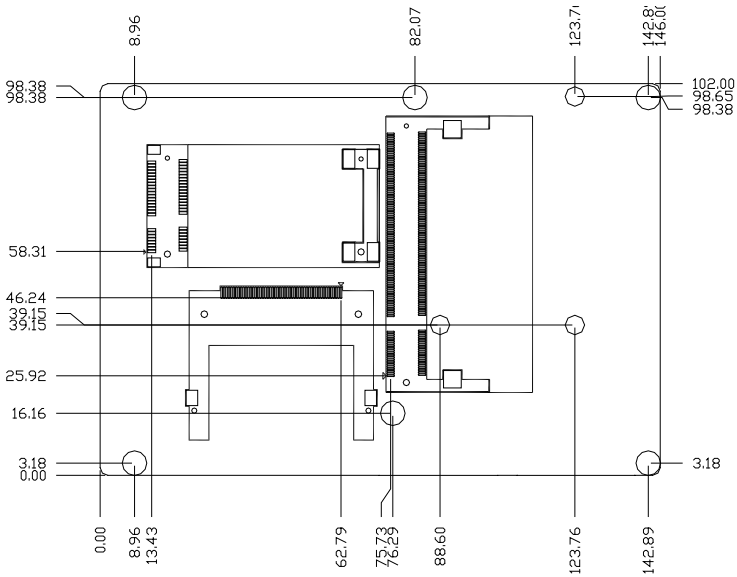


Figure 4: PCM-9363 Mechanical Drawing (Solder Side)

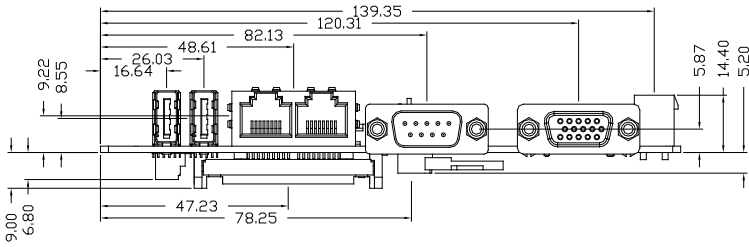


Figure 5: PCM-9363 Mechanical Drawing (Side View)

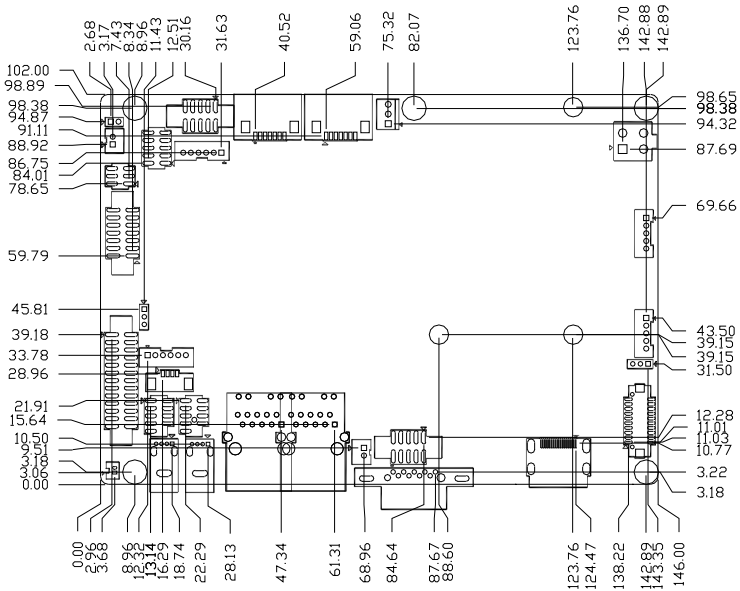


Figure 6: PCM-9363 HDMI Mechanical Drawing (Top View)