

PART NUMBER	"A" (HOLE DIAMETER)	"B" (PANEL THICKNESS)	"C"	"D" REF.	"E"	FIGURE
USR-1131	.197 (5.0)	.059-.236 (1.5-6.0)	.472 (12.0)	.433 (11.0)	.153 (3.9)	1.
USR-1132	.236 (6.0)		.630 (16.0)			2.
USR-1133	.315 (8.0)	.118-.394 (3.0-10.0)	.787 (20.0)	.551 (14.0)	.157 (4.0)	3.

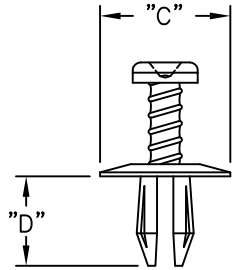
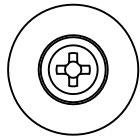


FIG.1.

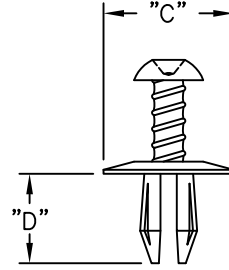
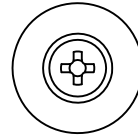


FIG.2.

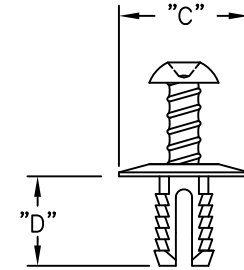
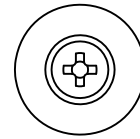
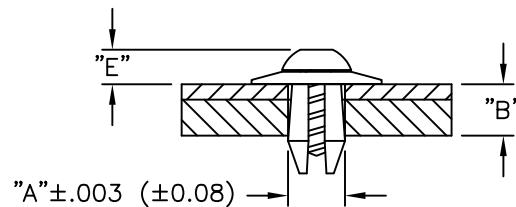


FIG.3.



TYPICAL ASSEMBLY

NOTES:

- MATERIAL: NYLON 6/6 (RMS-115).
- COLOR: BLACK.

TITLE: UNSCREWING SNAP RIVETS			DWG IN IN.(MM)		FINAL		PART #		PRINT TYPE	
E	USR-1131 PANEL THCK CHANGED,CO 200648	SK 04.01.11	TOLERANCES UNLESS NOTED .XX=±.020 .XXX=±.015 FRAC=1/32 ANG=±1°	FILE #	USR	DWN:	S.M.	APP:	USR-SERIES	CA
D	USR-1132 PANEL THCK CHANGED,CO 200530	SK 05.10.10		MAT'L:	SEE NOTES	DT:	10/30/00	DT:		
C	TABLE CORRECTED	SM 01.18.02		RE:	RICHCO INC.	RICHCO INC. PO BOX 804238,CHICAGO,60680 (773) 539-4060				
B	ADDED RMS-115 AND CHANGED FILE NO.	S.M 03.29.01								
A	COMPLETELY RE-DRAWN	SM 11.01.00								
REV	DESCRIPTION	ENGR DATE								