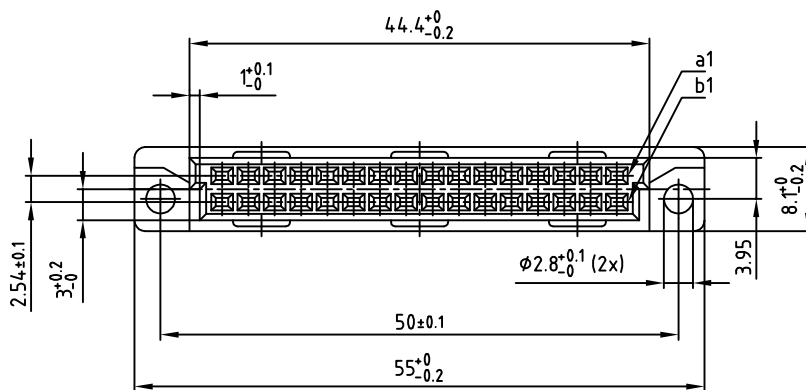
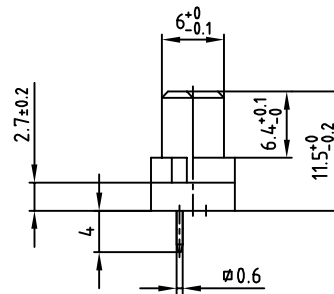
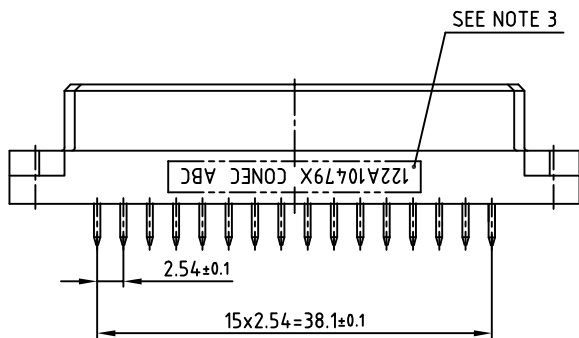


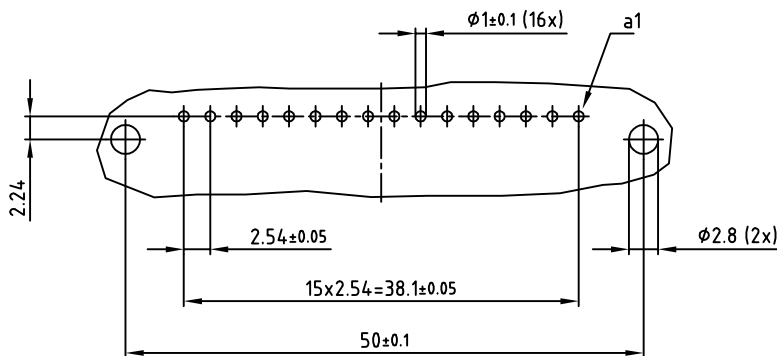
used for: DIN EN 60603-2 TYPE "B 1/2"



NOTES:

1. INSULATORS: PBT UL 94 V-0; GREY
2. CONTACTS: COPPER ALLOY
PLATING: GOLD OVER NICKEL
50 MATING CYCLES
3. CONNECTOR IS PART MARKED: 122A10479X CONEC ABC

Directive 2002/95 EC
„RoHS“
Compliant



P.C.B. HOLE DRILLINGS

APPROVAL # FREIGABE # DEBLOCAGE # AUTORIZACION # APPROVAL	
CUSTOMER APPROVAL DATE:	
NAME:	TITLE:
COMPANY NAME:	
APPROVAL # FREIGABE # DEBLOCAGE # AUTORIZACION # APPROVAL	

THIS DRAWING MAY NOT BE COPIED OR REPRODUCED IN ANY WAY, AND MAY NOT BE PASSED ON TO A THIRD PARTY, WITHOUT WRITTEN PERMISSION. OWNERSHIP AND COPYRIGHT OF CONEC Gmbh DO NOT ALTER CAD DRAWING BY HAND

rev.	description	date	name
a	Origin		

tolerance		
⌀	⊕	dim. in mm
2010	date	name
drawn	05.11.	Henneboel
appd.	05.11.	Mickenbecker
norm	DIN EN 60603-2	
d-old		
CONEC ®		

scale:	2:1	
material:	SEE NOTES	
title:	FEMALE CONNECTOR TYPE "B 1/2"	
	16pos. SOLDER PIN 4mm	
dwg no:	AutoCAD 2006	DIN-A
	12K1A701	3
part no:	122A10479X	
		sh: 1/1