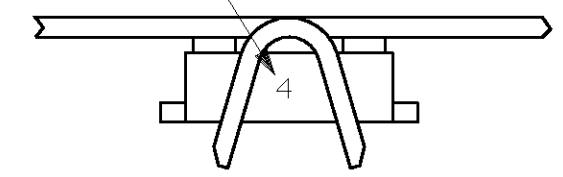


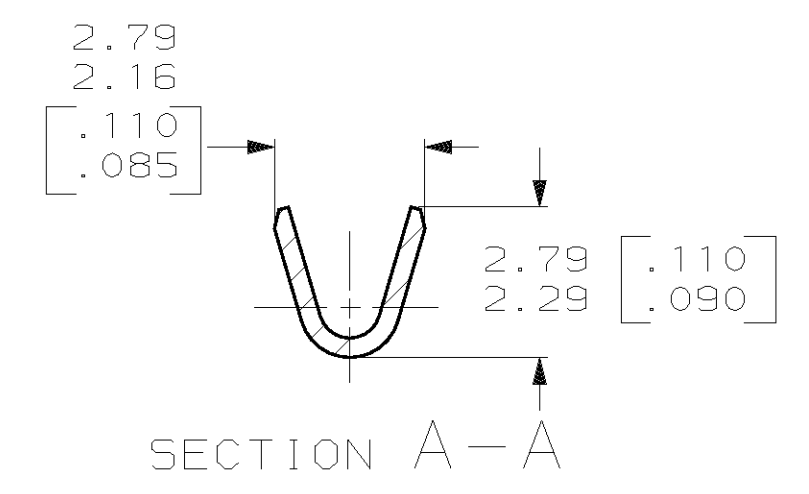
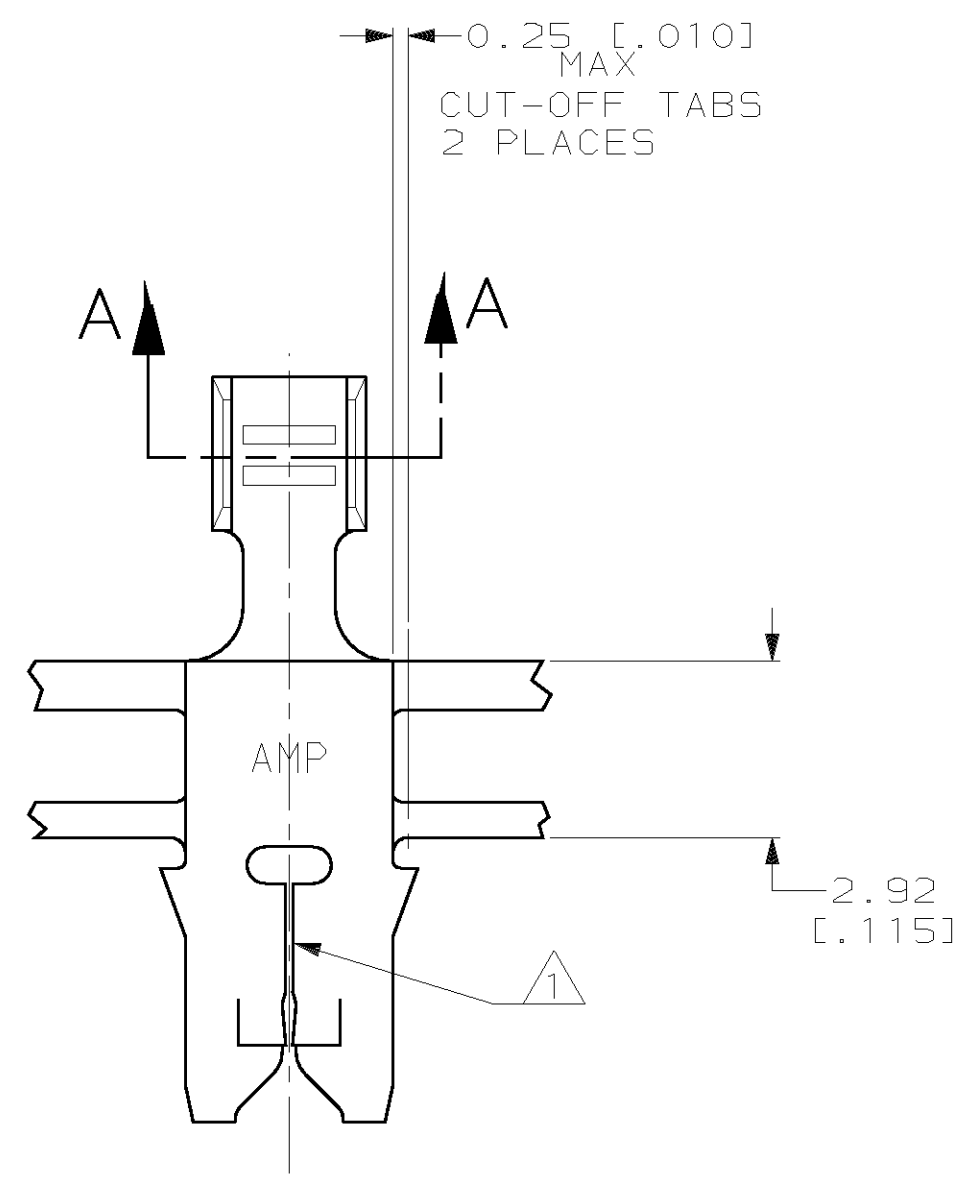
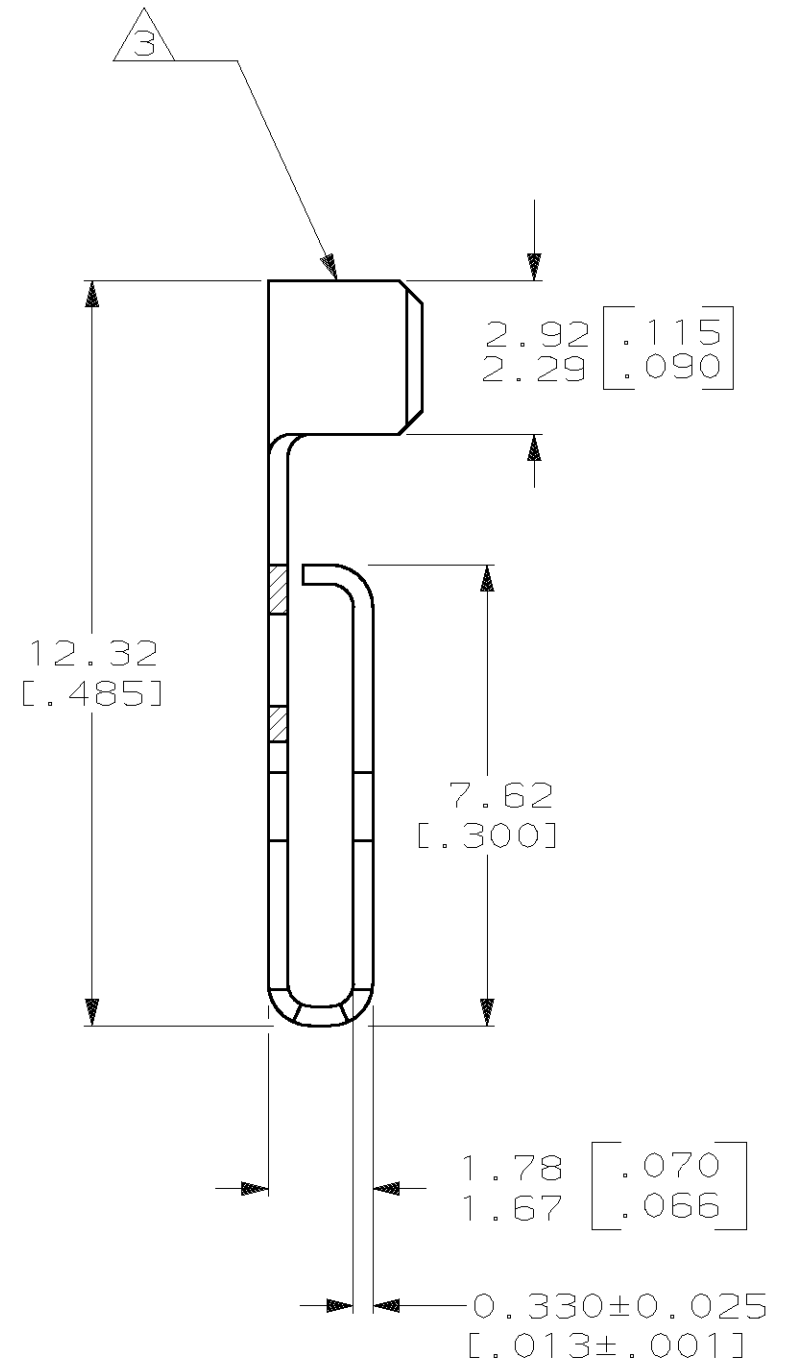
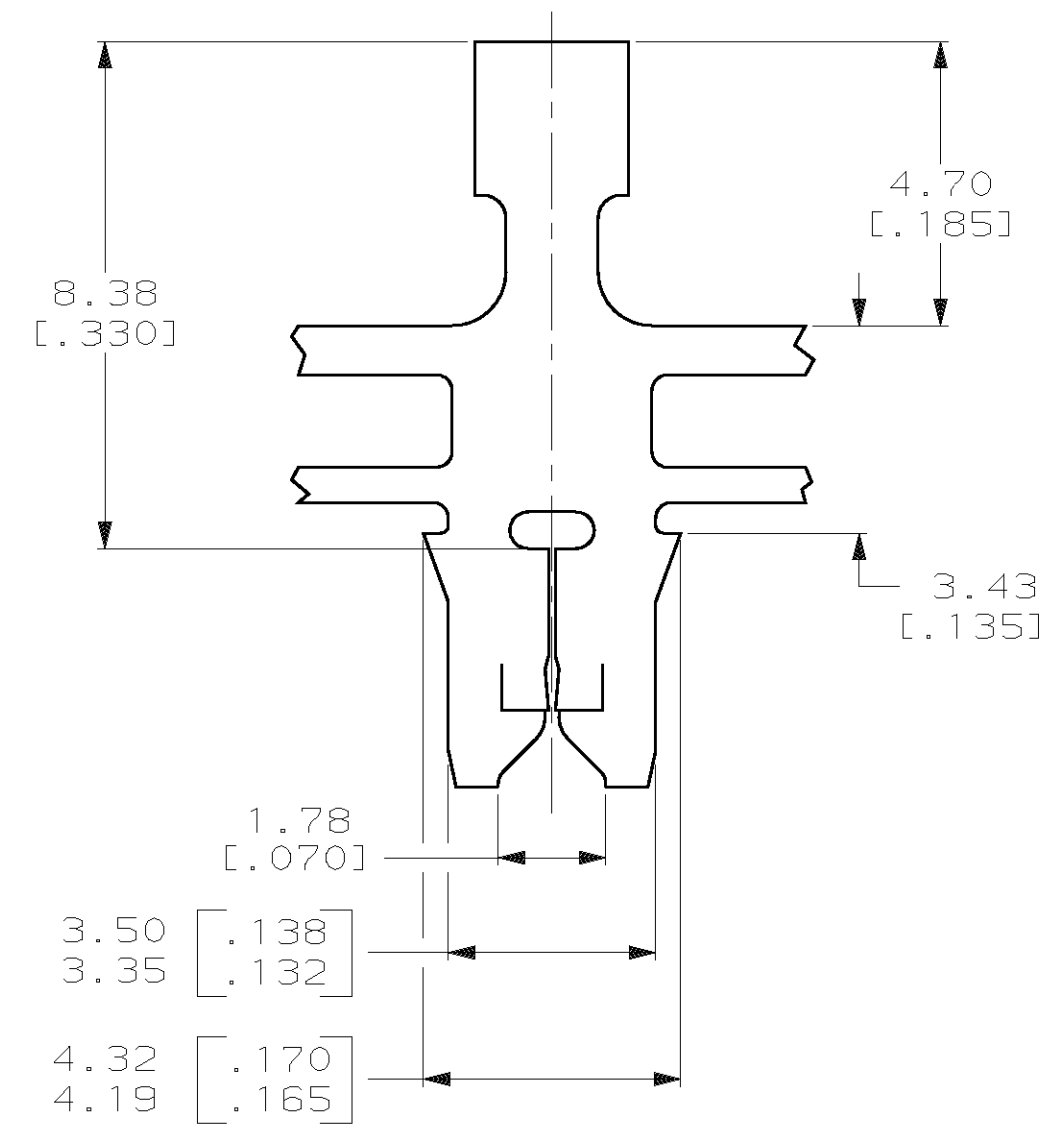
THIS DRAWING IS UNPUBLISHED. RELEASED FOR PUBLICATION .19
 (C) COPYRIGHT 19 BY AMP INCORPORATED. ALL RIGHTS RESERVED.

LOC		DIST		REVISIONS			
P	LTR	DESCRIPTION		DATE	DWN	APVD	
AF	50	E		REVISED PER EC 063A-0046-99	14JUL99	SW	KR

IDENTIFICATION NUMBER 4 FOR MAGNET WIRE RANGE



- 1 SLOT TERMINATES 0.18-0.23mm [#33-#31] AWG COPPER MAGNET WIRE EITHER SINGLE OR DOUBLE OF THE SAME SIZE.
- 2 CONTINUOUS STRIP ON REELS WITH TERMINALS LOCATED ON 8.38±0.08 [.330±.003] CENTERS.
- 3 WIRE BARREL TO ACCEPTS #22-#18 AWG STRANDED LEAD WIRE.



63235-1
PART NUMBER

THIS DRAWING IS A CONTROLLED DOCUMENT.		DWN MICHAEL S. FEHER 17SEP96	AMP AMP Incorporated Harrisburg, PA 17105-3608
DIMENSIONS: mm [INCHES]		CHK RICHARD GRZYBOWSKI 25SEP96	
TOLERANCES UNLESS OTHERWISE SPECIFIED:		APVD NELSON E. NEFF 25SEP96	NAME
0 PLC ±-		PRODUCT SPEC	108-2012
1 PLC ±-		APPLICATION SPEC	114-2046
2 PLC ±0.25 [.010]		WEIGHT	-
3 PLC ±-		CUSTOMER DRAWING	SCALE 8:1
4 PLC ±-		MATERIAL 4M BRASS	SHEET 1 OF 1
FINISH 0.002032 [.000080] MIN TIN		DRAWING NO C-63235	REV E