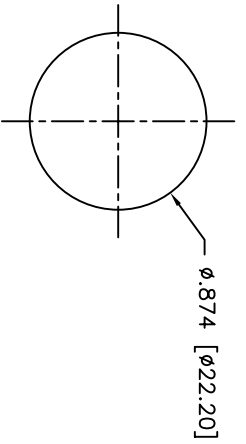
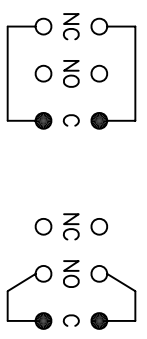
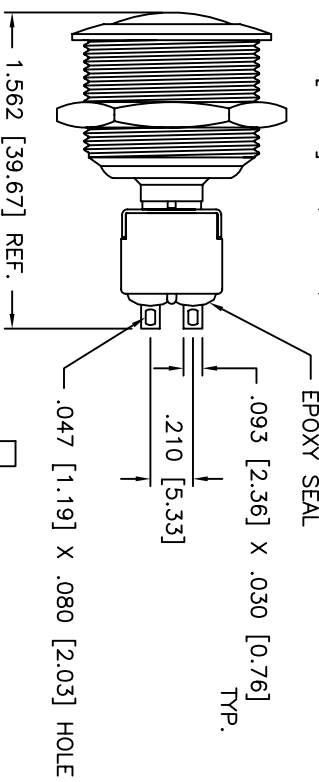
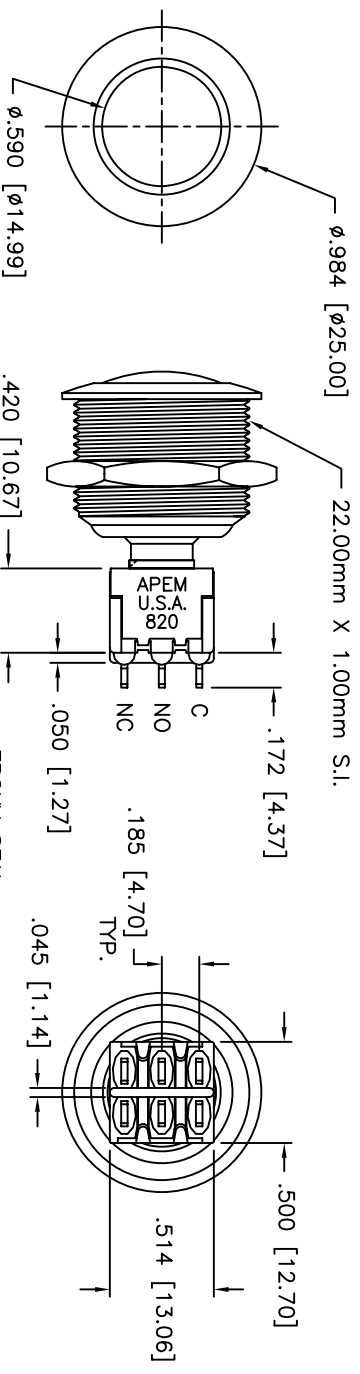


DATE	SYM	REVISION RECORD	DWN.	CK.



PANEL CUT-OUT

APEM CONFIDENTIAL
 THIS DOCUMENT CONTAINS INFORMATION WHICH IS THE EXCLUSIVE PROPERTY OF APEM COMPONENTS, INC. DISTRIBUTION, REPRODUCTION OR USE BY OTHERS IS NOT PERMITTED WITHOUT THE EXPRESS WRITTEN CONSENT OF APEM COMPONENTS, INC.

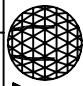
DESCRIPTION: DOUBLE POLE DOUBLE THROW
 MOMENTARY SNAP-ACTING PUSH-BUTTON
 ANTI-VANDAL SWITCH

SPECIFICATIONS:

CONTACT RATING: 6A @ 125VAC, 3A @ 250VAC,
 or 7A @ 30VDC

ELECTRICAL LIFE: 60,000 CYCLES MIN.
 INITIAL CONTACT RESISTANCE: 20 MOHMS MAX.
 at 3VDC, 0.1A

INSULATION RESISTANCE: > 200,000 MOHMS
 BETWEEN TERMINALS AND CASE GROUND
 DIELECTRIC STRENGTH: > 1,000VAC FOR 1 MIN.
 BETWEEN TERMINALS AND CASE GROUND
 OPERATING TEMPERATURE RANGE: -30°C to +80°C

TOLERANCES (EXCEPT AS NOTED)	DECIMAL ± .012 [0.30]	FRACTIONAL ± -	ANGULAR ± -
 APEM WAKEFIELD, MA.			
DATE	05/03/99	DRAWING NUMBER	B1521
REV	—	TITLE	AV02820KMZQ
SCALE	1.5:1	DRAWN	PJD
APPROVED		QA INSPECT	△
		DESIGNATES CRITICAL DIMENSION	