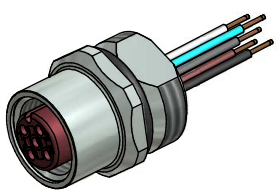


Contact assignment:

- 1) brown
- 2) white
- 3) blue
- 4) black
- 5) grey



Technical specification:

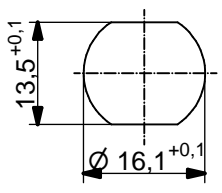
Rated voltage: IEC 61076-2-101	60 V
Current rating: IEC 61076-2-101	4 A at 40°C
Insulation resistance: IEC 60512	>=100 MΩ
Pollution degree: IEC 60664-1	3/2
Degree of protection: IEC 60529	IP 67, in mated condition
Temperature range: IEC 60664-1	+100°C - 30.000h +125°C - 8.000h +150°C - 2.000h
Mating cycles: IEC 60512-9a	>=100

Materials:

Contact:	CuZn, CuBe
Contact plating:	Nickel, gold plated
Contact carrier:	PBT GF, UL 94
Sealing:	FPM
Socket housing:	CuZn, nickel plated
Grouting:	Polyurethane-resin, UL 94

Installation specification:

recommended torque:	1-1,2 Nm
Conec installation tool:	Torque wrench: 36-000200 Insert across flats 17: 36-000230



Minimum wall thickness 1,5mm,
alternativ panel cut-out d=16,1

Part no:	Description:	Pos	Länge L:	Wire:
43-01046	SAL - HT - 12 - FK5.1 - 0,5	5	0,5m	Copolymer, UL AWG 24
43-xxxxx	SAL - HT - 12 - FK5.1 - ...	5	x	

DO NOT ALTER CAD DRAWING BY HAND Directive 2002/95/EC RoHS compliant	Index: b 19.08.10 fro Ä3696 specification of wires changed, Data sheet revised	 dim. in mm	title: Female socket M12x1 with wires, frontmounting, HT								
	tolerance of wire: L ≤ 0,5m: L + 20mm L > 0,5m: L + 4%				<table border="1" style="width: 100%; border-collapse: collapse;"> <thead> <tr> <th></th> <th>date</th> <th>name</th> </tr> </thead> <tbody> <tr> <td>drawn</td> <td>04.04.07</td> <td>Franz</td> </tr> <tr> <td>appd.</td> <td>04.04.07</td> <td>Mankopf</td> </tr> </tbody> </table>		date	name	drawn	04.04.07	Franz
		date	name								
	drawn	04.04.07	Franz								
appd.	04.04.07	Mankopf									
THIS DRAWING MAY NOT BE COPIED OR REPRODUCED IN ANY WAY, AND MAY NOT BE PASSED ON TO A THIRD PARTY WITHOUT WRITTEN PERMISSION. OWNERSHIP AND COPYRIGHT OF CONEC GmbH			dwg no: 43K1A270								
			part no:								