

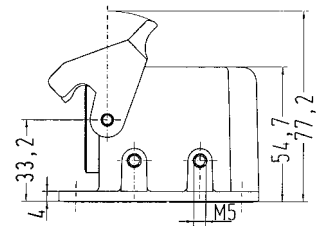
single locking lever



Identification	Part number	Drawing Dimensions in mm
----------------	-------------	-----------------------------

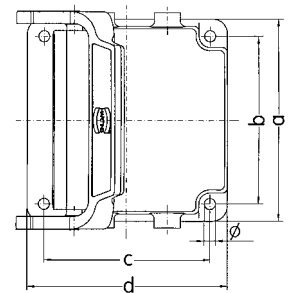
Han-Drive®,  
Housings for motor termination,  
unpainted,  
Han-Easy Lock®

09 30 410 0901  
09 30 410 0909  
09 30 410 0921



Han-Drive®,  
Housings for motor termination,  
unpainted,  
with protection cover,  
Han-Easy Lock®

09 30 410 0951  
09 30 410 0960  
09 30 410 0970  
09 30 410 0971  
09 30 410 0974  
09 30 410 0983



Han-Drive®,  
Housings for motor termination,  
powder-coated RAL 7037,  
Han-Easy Lock®

09 30 010 0901  
09 30 010 0902

Han-Drive®,  
Housings for motor termination,  
powder-coated RAL 7037,  
with protection cover,  
Han-Easy Lock®

09 30 010 0961

	a	b	c	d	Ø
09 30 010 0901	82	68	68	82	4.5
09 30 010 0902	98			98	
09 30 010 0961	82	70	70	82	
09 30 410 0901	82	68	68	82	4.5
09 30 410 0909	98			98	
09 30 410 0921	85	73	73	85	
09 30 410 0951	82	68	68	82	4.5
09 30 410 0960	98	70	70	98	4.3
09 30 410 0970	92	77	77	92	4.3
09 30 410 0971	85	73	73	85	5.5
09 30 410 0974	92	70	70	92	4.3
09 30 410 0983	92	80	80	92	5.1
09 62 810 0901	82	68	68	82	4.5
09 62 810 0974	92	70	70	92	4.1