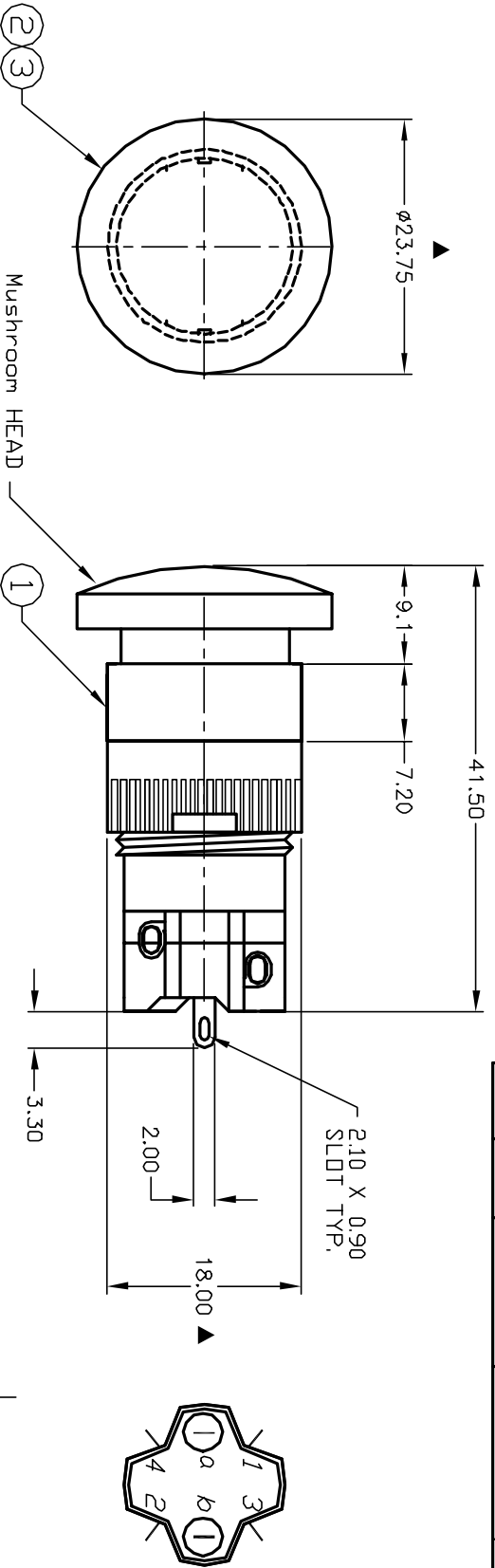
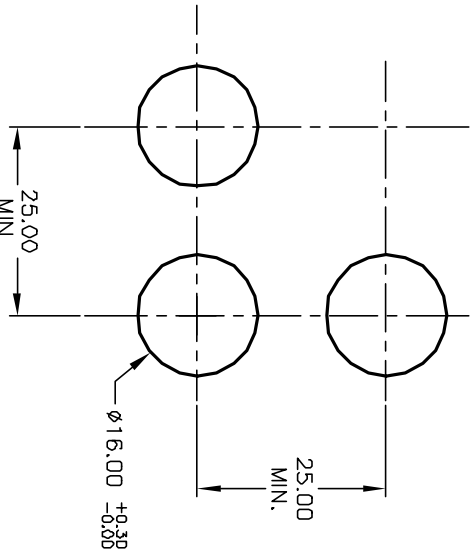


ITEM	QTY.	PART NO.	PART DESCRIPTION
1	1	F040006	D16 EE R1 1
2	1	F050420	50-004-20 (RED LED BULB)
3	1	F051202	50-012-02 (TRANSPARENT RED LENS)



1 0 1 0 2
 3 0 0 4
 a-(L)-b (+)

SPST
 CONTACT CONFIGURATION



- NOTES:
1. ALL DIMENSIONS IN MM
 2. GENERAL TOLERANCE: X.X=±0.4
X.XX=±0.25
 3. RATINGS: 5A @250V AC
8A @125V AC
UL, VDE, CSA, Semko, Nemko, Demko, Fimko Approved
 5. LAMP VOLTAGE: 110V AC (NEON BULB)
 6. CONTACT MATERIAL:
COPPER ALLOY w/Silver Plating
 7. ▲ DENOTES CRITICAL PARAMETER.

REV.	ECN No.	DESCRIPTION	DATE	CHKD	AR	TITLE	SCALE	DATE	DR	DWG	REV
A	13223	RELEASED FOR PRODUCTION	6/17/03	AR		D16EER1JREDRED	1.5:1	6/17/03	AR	XF0556P	A

THE INFORMATION CONTAINED IN THIS DOCUMENT IS PROPRIETARY TO E-SWITCH AND IS NOT TO BE COPIED OR TRANSFERRED