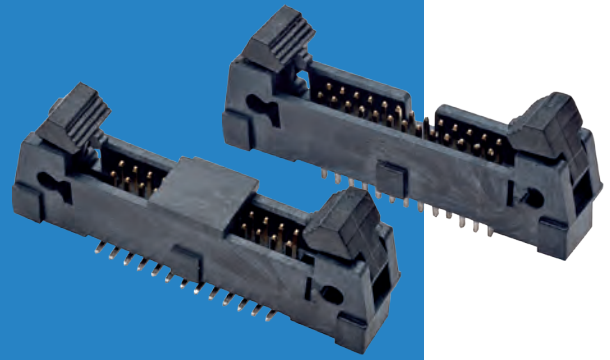


Archer Connectors – M50 IDC

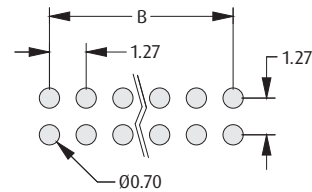
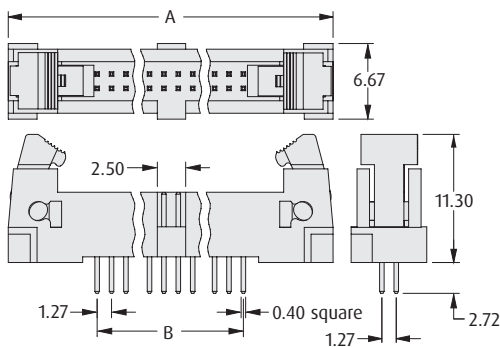
Male Vertical Latching Connectors

- Suitable for use with female cable connectors shown on previous page.
- Surface mount option has locking pegs for location and retention.
- Shrouded for robust pin protection.
- Polarised to prevent mis-mating.
- Secure, positive latch & ejection system.
- Tape and Reel packaging option includes Pick and Place cap for automated assembly.



1.27mm (.050") PITCH

PC TAIL

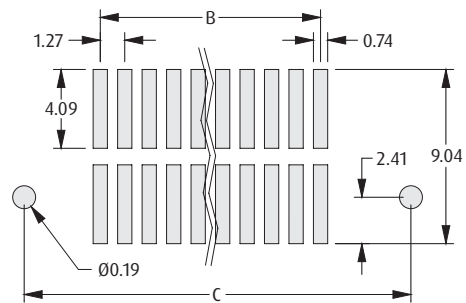
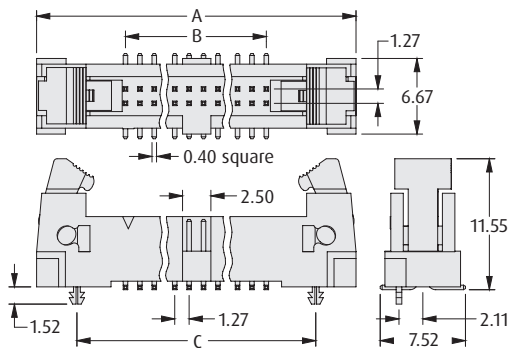


Recommended PC Board Pattern

CALCULATION

| | |
|----------|----------------------------------------------------|
| A | $B + 15.75$ |
| B | $1.27 \times (\text{No. of contacts per row} - 1)$ |
| C | $B + 8.64$ |

SURFACE MOUNT



Recommended PC Board Pattern

HOW TO ORDER

M50 - 3 X 5 XX 42 X

SERIES CODE

TYPE

| | |
|----------|---------------|
| 5 | PC Tail |
| 6 | Surface Mount |

NO. OF CONTACTS PER ROW

05, 06, 07, 08, 10, 13, 17, 20, 25

PACKAGING

| | |
|--------------|-------------------------|
| R | Tape & Reeled (M50-365) |
| Blank | Loose (M50-355) |

FINISH

42 Gold + Tin

All dimensions in mm.