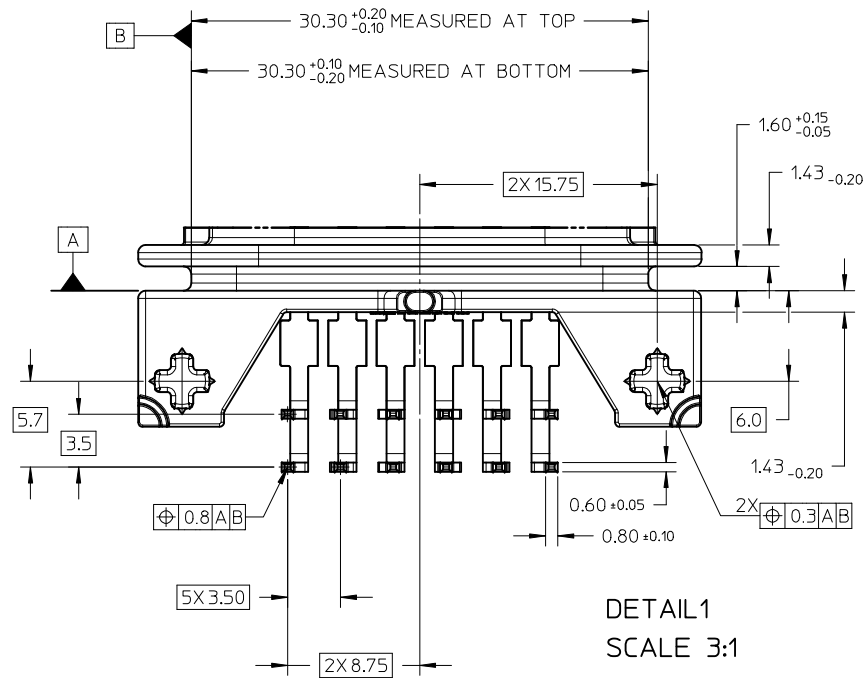
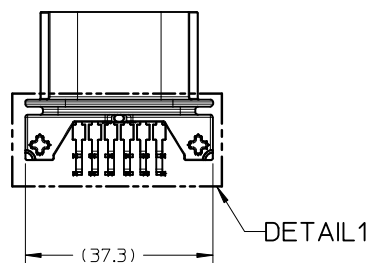
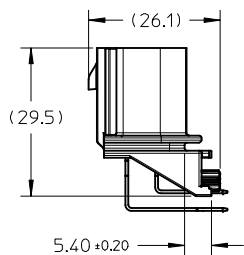
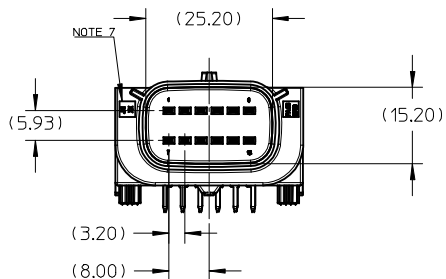


NOTES:

1. MATERIAL
 - A) HEADER HOUSING: HB RATED 30% GLASS FILLED NYLON
 - B) HEADER TERMINAL: BRASS
2. PLATING
 - POST-PLATED TIN 1 MICRON MINIMUM
3. HEADER TERMINALS WILL NOT HAVE BARE EDGES
4. PRODUCT WILL COMPLY WITH PS-36783-001
5. HEADER MATES WITH SERIES 36792
6. PCB THICKNESS CONSIDERED 1.6MM
7. CAVITY NUMBER WILL BE IDENTIFIED ON HEADER, LOCATION IS AS SHOWN
8. MANUFACTURING DATE CODE WILL BE IDENTIFIED ON BAR CODE LABEL SHIPPED AGAINST EACH ORDER. PARTS WILL BE TRACED AGAINST THIS
9. TRUE POSITION MEASUREMENTS FOR SOLDER TAIL WILL BE PROVIDED DURING INITIAL PPAP SUBMISSION. ONGOING THIS WILL BE CHECKED WITH GAUGE
10. ALL DIMENSIONS SHOWN ARE APPLICABLE AS RECEIVED INTO CUSTOMER PLACE. MOLEX OWNS RESPONSIBILITY FOR HEADER AS SHIPPED FROM MOLEX. ASSEMBLY OF HEADER ON TO CONTROL UNIT ALONG WITH ITS FUNCTIONALITY COMES UNDER CUSTOMER SCOPE.
11. COMPLY WITH PACKING SPECIFICATION PK-36783-001
12. PRODUCT TOOLING STATUS - PRODUCTION TOOLING AVAILABLE FOR 12 CIRCUIT ONLY (SEE TABLE A).

SEE SHEET 5 EC NO: I2014-0218 DRWN: HTHYAGARA J 2014/06/25 CHKD: APPR: KPRASAD 2014/07/07	QUALITY SYMBOLS $F_A=0$ $F_G=0$ $F_P=0$	GENERAL TOLERANCES (UNLESS SPECIFIED)		DIMENSION STYLE MM ONLY		SCALE 1:1	DESIGN UNITS METRIC	THIRD ANGLE PROJECTION	
			mm	INCH	DRAWN BY STHM01	DATE 2012/07/17	TITLE MX120G DUAL ROW 3.2/3.5 HEADER ASSY SEALED SYSTEM molex DOCUMENT NO. SD-36783-004 SHEET NO. 1 OF 5		
		4 PLACES	± ---	± ---	CHECKED BY KPRASAD	DATE 2012/07/19			
		3 PLACES	± ---	± ---	APPROVED BY KPRASAD	DATE 2013/09/13			
2 PLACES	± ---	± ---	MATERIAL NO. SEE TABLE A & B						
			1 PLACE	± ---	± ---				
			0 PLACE	± ---	± ---				
			ANGULAR ± --- °						
			DRAFT WHERE APPLICABLE MUST REMAIN WITHIN DIMENSIONS		SIZE A3		THIS DRAWING CONTAINS INFORMATION THAT IS PROPRIETARY TO MOLEX INCORPORATED AND SHOULD NOT BE USED WITHOUT WRITTEN PERMISSION		

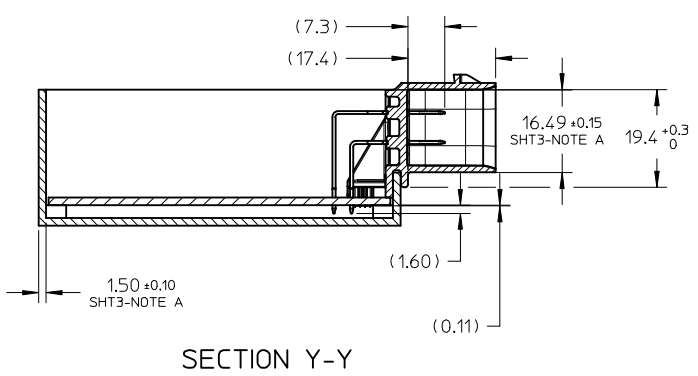
12CKT HEADER DIMENSIONS DETAILS- SEE BELOW IN SHEET 2 OF 4



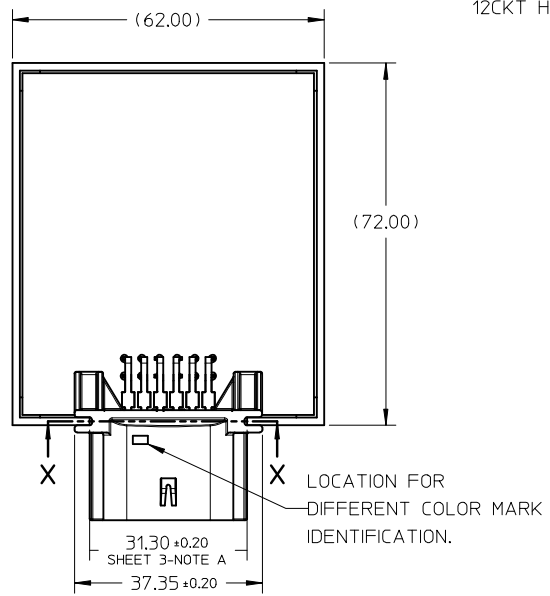
DETAIL 1
SCALE 3:1

SEE SHEET 5 EC NO: I2014-0218 DRWN: HITHYAGARAJ 2014/06/25 CHKD: APPR: KPRASAD 2014/07/07	QUALITY SYMBOLS	GENERAL TOLERANCES (UNLESS SPECIFIED)		DIMENSION STYLE MM ONLY		SCALE 1:1	DESIGN UNITS METRIC	THIRD ANGLE PROJECTION
	$\nabla = 0$	4 PLACES	mm	INCH	DRAWN BY	DATE	TITLE	
	$\nabla = 0$	3 PLACES	± ---	± ---	STHM01	2012/07/17	MX120G DUAL ROW 3.2/3.5 HEADER ASSY SEALED SYSTEM	
	$\nabla = 0$	2 PLACES	± ---	± ---	CHECKED BY	DATE	molex DOCUMENT NO. SD-36783-004 SHEET NO. 2 OF 5	
	1 PLACE	± ---	± ---	KPRASAD	2012/07/19			
	0 PLACE	± ---	± ---	APPROVED BY	DATE			
			ANGULAR ± --- °		KPRASAD	2013/09/13		
		DRAFT WHERE APPLICABLE MUST REMAIN WITHIN DIMENSIONS		MATERIAL NO.		SEE TABLE A & B		
				SIZE	THIS DRAWING CONTAINS INFORMATION THAT IS PROPRIETARY TO MOLEX INCORPORATED AND SHOULD NOT BE USED WITHOUT WRITTEN PERMISSION			
				A3				

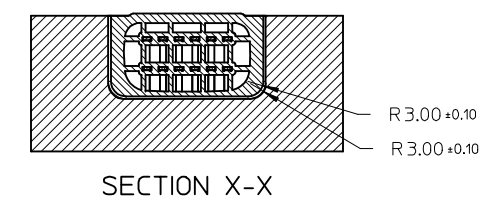
12CKT HEADER DIMENSIONS DETAILS- SEE BELOW IN SHEET 3 OF 4



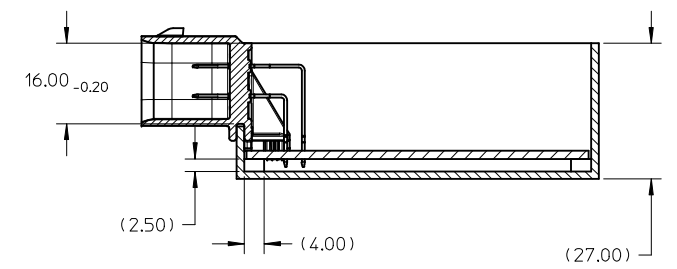
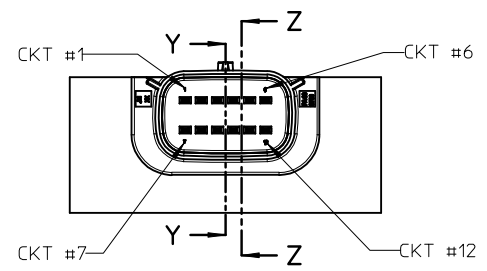
SECTION Y-Y



LOCATION FOR DIFFERENT COLOR MARK IDENTIFICATION.



SECTION X-X



SECTION Z-Z

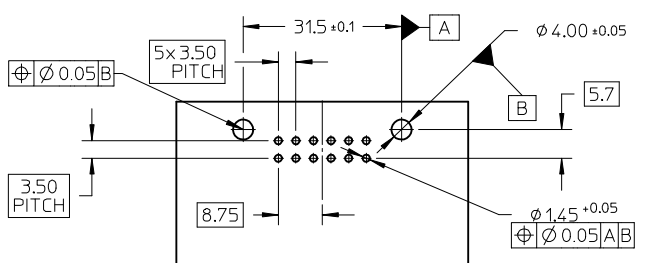
NOTE A
 - ALL THESE DIMENSIONS ARE BOX DIMENSIONS TOL. OF THESE ARE CONSIDERED AS GENERAL TOL. AS MENTIONED AGAINST THE DIMENSIONS.

SEE SHEET 5 EC NO: 12014-0218 DRWN: HTHYAGARAJ 2014/06/25 CHKD: APPR: KPRASAD 2014/07/07	QUALITY SYMBOLS	GENERAL TOLERANCES (UNLESS SPECIFIED)		DIMENSION STYLE MM ONLY		SCALE 1:1	DESIGN UNITS METRIC	THIRD ANGLE PROJECTION
	$\nabla_{\sqrt{3}}=0$	mm	INCH	DRAWN BY STHM01	DATE 2012/07/17	TITLE MX120G DUAL ROW 3.2/3.5 HEADER ASSY SEALED SYSTEM molex MATERIAL NO. SD-36783-004 DOCUMENT NO. SHEET NO. 3 OF 5		
	$\nabla_{\sqrt{2}}=0$	4 PLACES ± --- ± ---	3 PLACES ± --- ± ---	CHECKED BY KPRASAD	DATE 2012/07/19			
	$\nabla_{\sqrt{1}}=0$	2 PLACES ± --- ± ---	1 PLACE ± --- ± ---	APPROVED BY	DATE			
	$\nabla_{\sqrt{0}}=0$	0 PLACE ± --- ± ---	ANGULAR ± --- °		KPRASAD			
DRAFT WHERE APPLICABLE MUST REMAIN WITHIN DIMENSIONS		SEE TABLE A & B		SIZE A3				

TABLE A

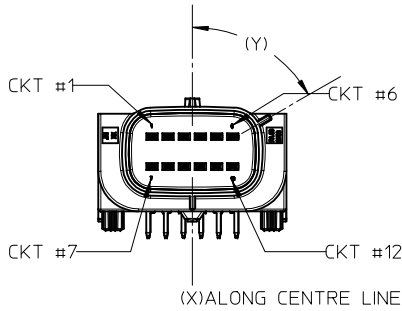
PART #	CIRCUIT SIZE	HEADER HOUSING COLOUR	COLOR MARK IDENTIFICATION	KEYING DIMENSION		STATUS	HEADER HOUSING QTY	HEADER TERMINAL QTY
				(X)	(Y)			
367830401	4	BLACK	-	40°	40°	NOT TOOLED	1	4
367830402	4		BROWN	40°	40°			
367830403	4		RED	40°	40°			
367830404	4		GREEN	40°	40°			
367830405	4		GREY	40°	40°			
367830406	4		BLUE	40°	40°			
367830407	4		YELLOW	40°	40°			
367830408	4		WHITE	40°	40°			
367830601	6		BLACK	-	40°			
367830602	6	BROWN		40°	40°			
367830603	6	RED		40°	40°			
367830604	6	GREEN		40°	40°			
367830605	6	GREY		40°	40°			
367830606	6	BLUE		40°	40°			
367830607	6	YELLOW		40°	40°			
367830608	6	WHITE		40°	40°			
367830801	8	BLACK		-	60°	60°	NOT TOOLED	1
367830802	8		BROWN	60°	60°			
367830803	8		RED	60°	60°			
367830804	8		GREEN	60°	60°			
367830805	8		GREY	60°	60°			
367830806	8		BLUE	60°	60°			
367830807	8		YELLOW	60°	60°			
367830808	8		WHITE	60°	60°			

PART #	CIRCUIT SIZE	HEADER HOUSING COLOUR	COLOR MARK IDENTIFICATION	KEYING DIMENSION		STATUS	HEADER HOUSING QTY	HEADER TERMINAL QTY				
				(X)	(Y)							
367831001	10	BLACK	-	60°	60°	NOT TOOLED	1	10				
367831002	10		BROWN	60°	60°							
367831003	10		RED	60°	60°							
367831004	10		GREEN	60°	60°							
367831005	10		GREY	60°	60°							
367831006	10		BLUE	60°	60°							
367831007	10		YELLOW	60°	60°							
367831008	10		WHITE	60°	60°							
367831201	12		BLACK	-	60°				60°	TOOLED	1	12
367831202	12			BROWN	60°				60°			
367831203	12	RED		60°	60°							
367831204	12	GREEN		60°	60°							
367831205	12	GREY		60°	60°							
367831206	12	BLUE		60°	60°							
367831207	12	YELLOW		60°	60°							
367831208	12	WHITE		60°	60°							
367831209	12	ORANGE		60°	60°							
367831210	12	VIOLET		60°	60°							
367831211	12	PINK		60°	60°							

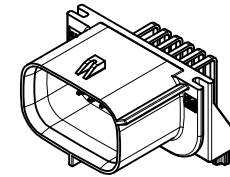


PCB LAYOUT
(12 CKT HEADER ONLY)

SEE SHEET 5 IEC NO: I2014-0218 DRWN: HTHYAGARAJ 2014/06/25 CHKD: APPR: KPRASAD 2014/07/07 REV	QUALITY SYMBOLS	GENERAL TOLERANCES (UNLESS SPECIFIED)		DIMENSION STYLE MM ONLY		SCALE 1:1	DESIGN UNITS METRIC	THIRD ANGLE PROJECTION	
	$\nabla_F = 0$ $\nabla_E = 0$ $\nabla_D = 0$	4 PLACES ± --- ± --- 3 PLACES ± --- ± --- 2 PLACES ± --- ± --- 1 PLACE ± --- ± --- 0 PLACE ± --- ± ---	mm INCH	DRAWN BY STHM01	DATE 2012/07/17	TITLE MX120G DUAL ROW 3.2/3.5 HEADER ASSY SEALED SYSTEM			
		ANGULAR ± --- °	DRAFT WHERE APPLICABLE MUST REMAIN WITHIN DIMENSIONS		CHECKED BY KPRASAD	DATE 2012/07/19	molex DOCUMENT NO. SD-36783-004		
					APPROVED BY KPRASAD	DATE 2013/09/13	SHEET NO. 4 OF 5		THIS DRAWING CONTAINS INFORMATION THAT IS PROPRIETARY TO MOLEX INCORPORATED AND SHOULD NOT BE USED WITHOUT WRITTEN PERMISSION



12 CKT - VIEW ONLY FOR P/N 367831213 (SEE NOTE B)



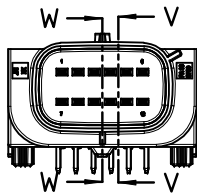
ISOMETRIC VIEW
P/N 367831213

TABLE B

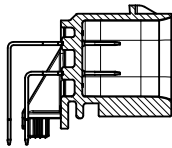
PART #	CIRCUIT SIZE	HEADER HOUSING COLOUR	COLOR MARK IDENTIFICATION	KEYING DIMENSION		STATUS	HEADER HOUSING QTY	HEADER TERMINAL QTY
				(X)	(Y)			
367831212	12			60°	60°			
367831213	12	GREY COLOUR	-	0° (ALONG CENTRE LINE)	60°	NOT TOOLED	1	12

NOTE B:

1. P/N 367831213 IS SAME AS P/N 367831201 WITH DIFFERENT KEY CODING (X)-0° ALONG CENTRE LINE , (Y)-60° AND WITH GREY COLOUR HOUSING.
2. FOR P/N 367831213 KEY CODE (X)-0° ALONG CENTRE LINE IS ALIGNED TO THE BOTTOM SIDE.
3. ALL OTHER DIMENSIONS FOR P/N 367831213 WILL REMAIN SAME AS PER P/N 367831201.



SECTION W-W



SECTION V-V

GREY COLOUR HOUSING ADDED EC NO: 12014-0218 DRWN: HTHYAGARAJ 2014/06/25 CHKD: APPR: KPRASAD 2014/07/07	REV DESCRIPTION	QUALITY SYMBOLS	GENERAL TOLERANCES (UNLESS SPECIFIED)		DIMENSION STYLE MM ONLY		SCALE 1:1	DESIGN UNITS METRIC	THIRD ANGLE PROJECTION	
		$\nabla_A = 0$ $\nabla_C = 0$ $\nabla_P = 0$	mm	INCH	DRAWN BY STHM01	DATE 2012/07/17	TITLE MX120G DUAL ROW 3.2/3.5 HEADER ASSY SEALED SYSTEM			
		4 PLACES	± ---	± ---	CHECKED BY KPRASAD	DATE 2012/07/19				
		3 PLACES	± ---	± ---	APPROVED BY KPRASAD	DATE 2013/09/13				
			ANGULAR ± --- °		MATERIAL NO.	DOCUMENT NO.		SHEET NO.		
			DRAFT WHERE APPLICABLE MUST REMAIN WITHIN DIMENSIONS		SEE TABLE A & B		SD-36783-004		5 OF 5	
			THIS DRAWING CONTAINS INFORMATION THAT IS PROPRIETARY TO MOLEX INCORPORATED AND SHOULD NOT BE USED WITHOUT WRITTEN PERMISSION							