

CONFIDENTIAL. THE INFORMATION CONTAINED IN THIS DOCUMENT IS THE PROPERTY OF COOPER INDUSTRIES, INC. IT IS NOT FOR PUBLIC DISCLOSURE. POSSESSION OF THE INFORMATION DOES NOT CONVEY ANY RIGHT TO LOAN, SELL OR DISCLOSE THE INFORMATION. UNAUTHORIZED REPRODUCTION OR USE OF THE INFORMATION IS PROHIBITED. THIS DOCUMENT IS TO BE RETURNED TO COOPER INDUSTRIES, INC. UPON COMPLETION OF THE PURPOSE FOR WHICH IT IS LOANED OR UPON REQUEST.

COPYRIGHT Cooper Industries, Inc. This is an unpublished work. The disclosure of this work is limited to select personnel. Further dissemination or disclosure to the public is PROHIBITED. This unpublished work is protected by Federal Copyright law and all rights thereunder are reserved by Cooper Industries, Inc.

SCALE
1x

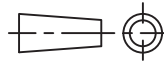
UNLESS OTHERWISE SPECIFIED TOLERANCES TO BE:
METRIC ±.13mm
INCHES ±.005"
ANGULAR ±2°

DATE
9-26-05


NO.
FWA-70BAS11

TITLE
REMOTE INDICATOR ASSEMBLY

THIRD ANGLE PROJECTION



INDICATES CRITICAL DIMENSION OR FEATURE



SUP. NO.
.

DATED
.

DWG. BAM

CK.

REV. --

INCHES (OR U.S. UNITS) IS THE PRIMARY UNIT OF MEASURE

METRIC (mm)
[INCHES]

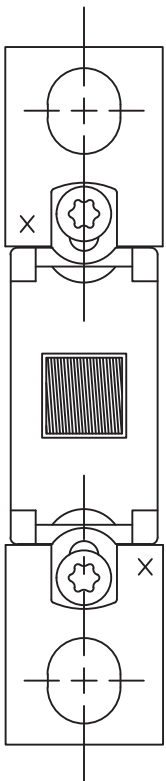
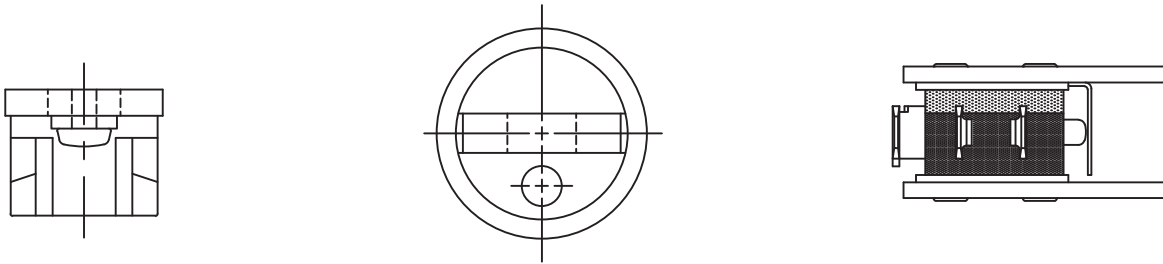
PAGE 1 OF 2

J05406

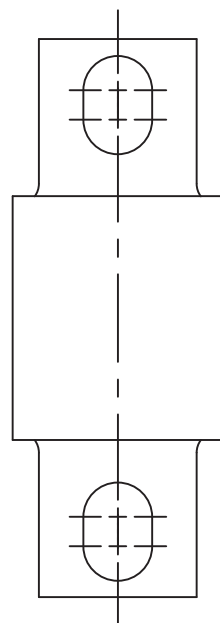
COOPER Bussmann
St. Louis, MO 63178

C/F NO. 66760

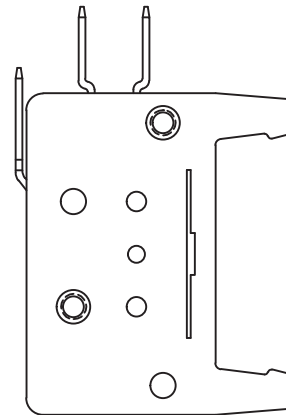
DISTRIBUTION 56 J



RFI MOUNTING ASSEMBLY #1A6160-01



FWA-70BAS11



INDICATOR ASSEMBLY #170H3027

PACKAGING SPECIFICATION #1P1877