


SIGN	DATE	DESCRIPTION	APPROVER
△			

THIS IS CAD DRAWING, DO NOT REVISE MANUALLY!!!

Material:

- Item ① Insulator(housing): Thermoplastic (UL94V-0)
- Item ② Contact pin: Brass

Electrical: cULus

- Voltage rating: 300V
- Current rating: 10A
- Withstanding Voltage: 1.6KV
- Operating temperature: -40°C to +115°C
- Soldering temperature: 250°C±10°C/5 Sec
- Safety Approval: 

RoHS Compliant

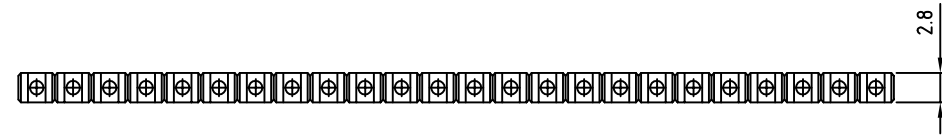
PART NUMBER:

OSTOPXX2200

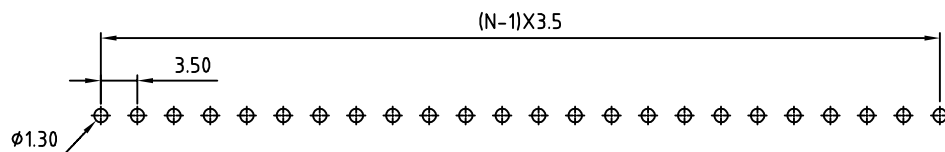
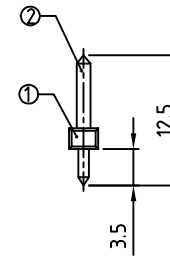
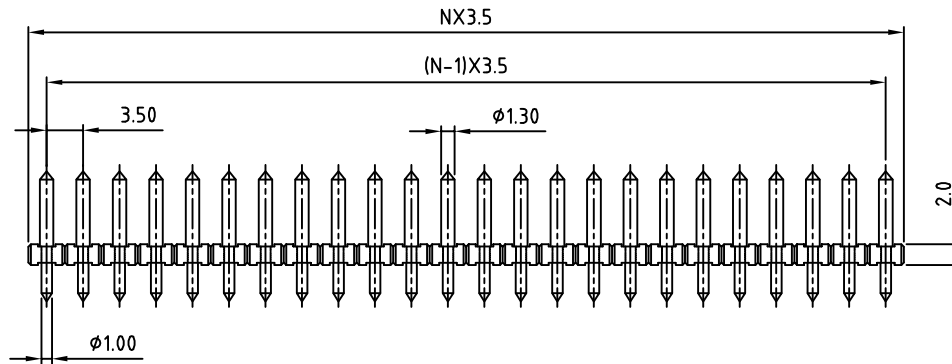
No. of Poles
 02: 2 Poles
 ⋮
 24: 24 Poles

Pin plating

0: Tin (STANDARD)
 1: Gold plating 10u" (MOQ)
 2: Gold flash (MOQ)



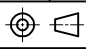
N : Number of poles



P.C.B. LAYOUT

THESE DRAWINGS AND SPECIFICATIONS ARE THE PROPERTY OF ON-SHORE TECHNOLOGY, INC. AND SHALL NOT BE REPRODUCED, COPIED OR USED IN ANY MANNER WITHOUT THE PRIOR WRITTEN CONSENT OF ON-SHORE TECHNOLOGY, INC.



TITLE		OSTOP-3.5mm series				
PART NO.		OSTOPXX2200		DWG NO.		OSTOPXX2200.DWG
APPROVED		CHECKED	DESIGNED	DRAWN	CUST NO.	
			Jacke 2009.01.05	Jacke 2009.01.05		
						Tolerance
				UNIT: mm		X. ±0.50
				SCALE: NONE		X.X ±0.30
				SHEET: 01/01		X.XX ±0.10
				REV.: A		X° ±1°