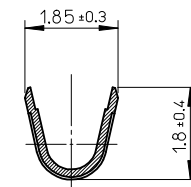
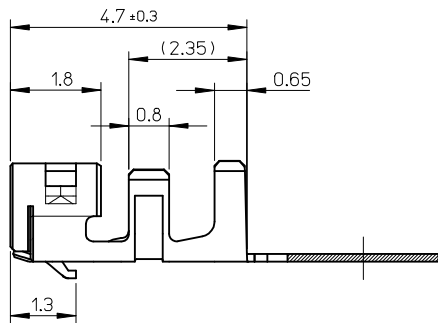
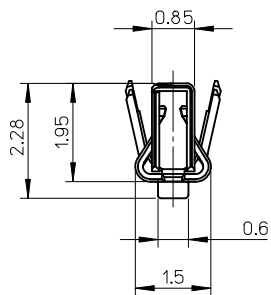
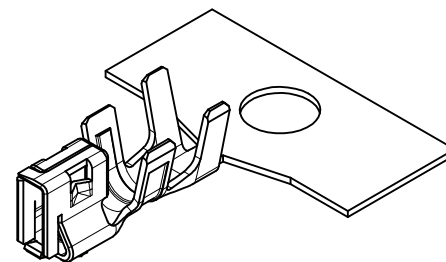
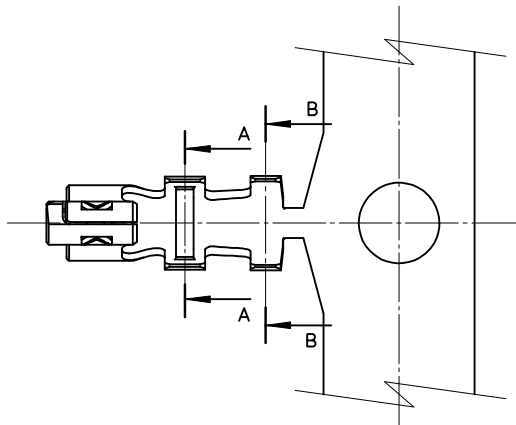
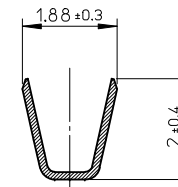


NOTES

1. Applicable housing: 502351-\*\*00
2. Material: Phosphor bronze, pre-tinned, t=0.152



SECTION A-A



SECTION B-B

WIRE RANGE AWG: #22~#26
INSULATION RANGE Ø1.4 MAX.

REVISED EC NO: JTR2013-0056 DRWN: YAMAKI 2013/03/19 CHKD: HKOMATSU 2013/03/19 APPR: MAYAMOTO 2013/03/21 REV: 0	DESCRIPTION GENERAL TOLERANCES (UNLESS SPECIFIED) 10 UNDER ±0.2 10 OVER 30 UNDER ±0.25 30 OVER ±0.3 ANGULAR ±3 ° DRAFT WHERE APPLICABLE MUST REMAIN WITHIN DIMENSIONS	DIMENSION STYLE MM ONLY	SCALE 10:1	DESIGN UNITS METRIC	THIRD ANGLE PROJECTION	
		DRAWN BY YAMAKI	DATE 2013/03/19	TITLE 2.0 WIRE TO BOARD CONN. CRIMP RECEPTACLE (DuraClik)		
		CHECKED BY HKOMATSU	DATE 2013/03/19	MATERIAL No. 560085-0101 CHAIN FORM		
		APPROVED BY MAYAMOTO	DATE 2013/03/21	SEE CHART		
		MATERIAL NO. SEE CHART	DOCUMENT NO. SD-560085-001	SHEET NO. 1 OF 1		
THIS DRAWING CONTAINS INFORMATION THAT IS PROPRIETARY TO MOLEX INCORPORATED AND SHOULD NOT BE USED WITHOUT WRITTEN PERMISSION						