

ADAM-6060

ADAM-6066

ADAM-6015

6-ch Digital Input/Relay Module

6-ch Digital Input/Power Relay Module

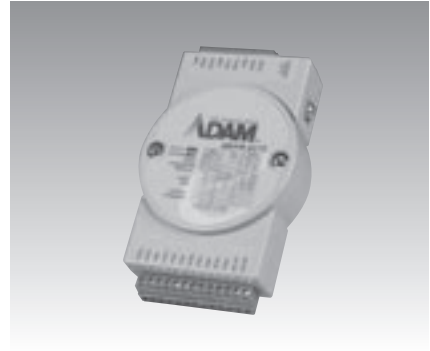
7-ch RTD Input Module



ADAM-6060



ADAM-6066



ADAM-6015



Specifications

General

- **Power Consumption** 2 W @ 24 Vdc
- **Watchdog Timer** Yes, programmable (Comm.)

Digital Input

- **Channels** 6 DI
- **Dry Contact** Logic level 0: close to GND
Logic level 1: open
- **Wet Contact** Logic level 0: +3 V max
Logic level 1: 10 ~ 30 V_{DC}

Relay Output (Form A)

- **Channels** 6 Relay
- **Contact Rating** AC: 120 V @ 0.5 A
- **DC** 30 V @ 1 A
- **Breakdown Voltage** 500 V_{AC} (50/60 Hz)
- **Relay On Time** 7 ms
- **Relay Off Time** 3 ms
- **Total Switching Time** 10 ms
- **Insulation Resistance** 1 G. min. at 500 V_{DC} Protection

Ordering Information

- **ADAM-6060** 6-ch Digital Input/Relay Module

Common Specifications

General

- **Certifications** CE, FCC class A
- **Connectors** 1 x RJ-45 (LAN)
Plug-in screw terminal block (I/O, and power)
- **LAN** 10/100Base-T
- **LED Indicators** Power and communication
- **Power Input** Unregulated 10 ~ 30 V_{DC}

Digital Input

- Support 3 kHz Counter Input
- Support 3 kHz Frequency Input
- Support Invert DI Status

Specifications

General

- **Power Consumption** 2.5 W @ 24 Vdc
- **Watchdog Timer** Yes, programmable (Comm.)

Digital Input

- **Channels** 6 DI
- **Dry Contact** Logic level 0: close to GND
Logic level 1: open
- **Wet Contact** Logic level 0: +3 V max
Logic level 1: 10 ~ 30 V_{DC}

Relay Output (Form A)

- **Channels** 6 Relay
- **Contact Rating** AC: 250 V @ 5 A
- **DC** 30 V @ 5 A
- **Breakdown Voltage** 500 V_{AC} (50/60 Hz)
- **Relay On Time** 7 ms
- **Relay Off Time** 3 ms
- **Total Switching Time** 10 ms
- **Insulation Resistance** 1G. min. at 500 V_{DC} Protection

Ordering Information

- **ADAM-6066** 6-ch Digital Input/Power Relay Module

Digital Output

- Support Pulse Output
- Support High-to-Low Delay Output
- Support Low-to-High Delay Output

Protection

- **Power Reversal** Protection
- **Isolation Voltage** 2,000 V_{DC}

Environment

- **Humidity (Operating)** 20 ~ 95% RH (non-condensing)
- **Humidity (Storage)** 0 ~ 95% RH (non-condensing)
- **Operating Temperature** -10 ~ 70° C
- **Storage Temperature** -20 ~ 80° C

Specifications

General

- **Power Consumption** 2 W @ 24 Vdc
- **Watchdog Timer** Yes, programmable (comm.)

Analog Input

- **Accuracy** ± 0.05 % or better
- **Channels** 7 differential
- **CMR @ 50/60 Hz** 150 dB
- **Input Connections** 2 or 3 wire
- **Input Type** Pt, Balco and Ni RTD
- **Input Impedance** 10 k.
- **NMR @ 50/60 Hz** 100 dB
- **Resolution 16 bits**
- **RTD Types and Temperature Ranges**
 - PT-100 RTD
 - Pt-50° C to 150° C
 - Pt 0° C to 100° C
 - Pt 0° C to 200° C
 - Pt 0° C to 400° C
 - Pt-200° C to 200° C
 - EC RTD 100 ohms.= 0.00385)
 - JIS RTD 100 ohms.= 0.00392)
 - Pt 1000 RTD: Pt -40 ~ 160° C
 - Balco 500 RTD: -30 ~ 120° C
 - Ni 518: -80 ~ 100° C
 - Ni 518: 0 ~ 100° C
- **Sampling Rate** 10 samples / sec.
- **Span Drift** ± 25 ppm/° C
- **Zero Drift** ± 3 μV/° C

Protection

- **Individual Wire Burn-out Detection**

Ordering Information

- **ADAM-6015** 7-ch RTD Input Module