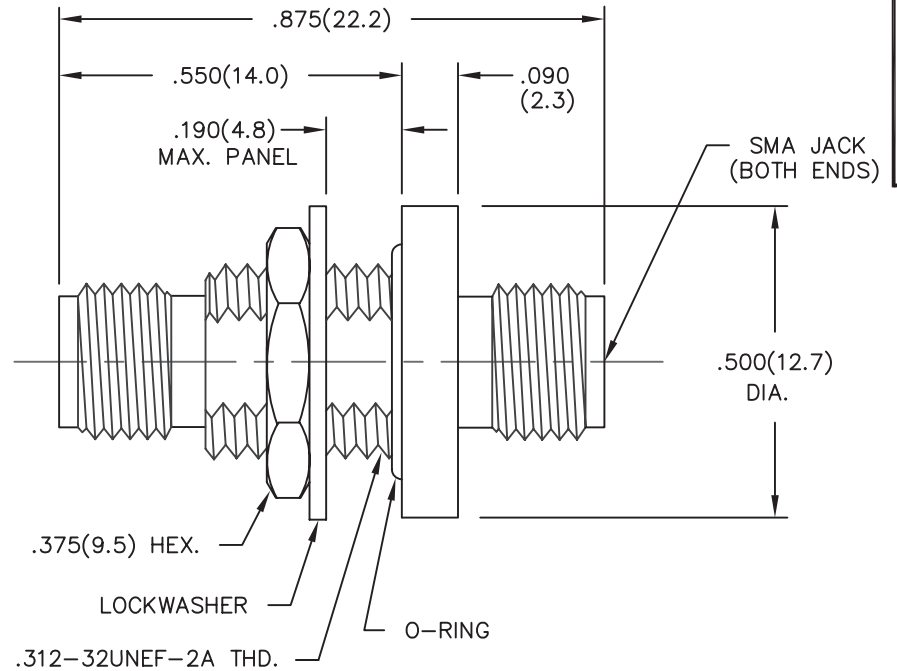
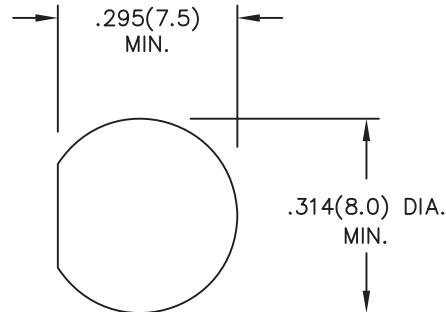


MODEL NUMBER  
ADT-2824-FF-SMA-02

NOTES:

- 1.0 MATERIALS:
  - 1.1 HOUSING, NUT & LOCKWASHER: STAINLESS STEEL PER ASTM-A582, TYPE 303.
  - 1.2 CENTER CONTACT: BERYLLIUM COPPER ROD ALLOY C172, PER ASTM-B196.
  - 1.3 DIELECTRIC: PTFE FLUOROCARBON PER ASTM-D1457.
- 2.0 PLATING:
  - 2.1 HOUSING, NUT & LOCKWASHER: PASSIVATED PER MIL-F-14072 & QQ-P-35
  - 2.2 CENTER CONTACT: GOLD PER MIL-G-45204, TYPE II, CLASS 2.
- 3.0 MECHANICAL:
  - 3.1 INTERFACE PER MIL-STD-348 IN ACCORDANCE WITH MIL-A-55339/28
  - 3.1 CENTER CONTACT CAPTURED IN ACCORDANCE WITH MIL-A-55339/28
- 4.0 ELECTRICAL:
  - 4.1 FREQUENCY RANGE: DC-18.0 GHz
  - 4.2 VSWR MAXIMUM: 1.10 +.01f(GHz)
  - 4.3 WILL MEET OR EXCEED THE ELECTRICAL SPECIFICATIONS OF MIL-A-55339/28.
- 5.0 DIMENSIONS IN PARENTHESIS ARE IN MILLIMETERS.




|      |             |         |
|------|-------------|---------|
| REV. | DESCRIPTION | DATE    |
| -    | RELEASED    | 9/22/94 |
| A    | ECN 17503   | 4/24/00 |

NOTICE: The information contained in this drawing is proprietary and must not be used without the permission of Cinch Connectivity Solutions.

UNLESS OTHERWISE NOTED DIMENSIONS ARE IN INCHES AND TOLERANCES ARE:

3 PLACE DECIMALS ±.005  
 2 PLACE DECIMALS ±.02  
 FRACTIONS ±1/64  
 PARALLELITY: T.I.R.  
 FLATNESS: T.I.R.  
 CONCENTRICITY: T.I.R.  
 ANGLES AND PERPENDICULARITY: ±1'

|   |              |  |                                |
|---|--------------|--|--------------------------------|
| CAGE CODE<br><b>34078</b>   |              | <b>MIDWEST MICROWAVE</b>                                     |                                |
|  |              | TITLE<br>ADAPTER - SMA JACK TO JACK BULKHEAD OUTLINE DRAWING |                                |
|   |              | DRAWN/DATE<br>A.BEATTY<br>9/19/94                            | ENG./DATE<br>A.OSGA<br>9/21/94 |
| DRAWING NUMBER<br>ADT-2824-FF-SMA-02-01   |              | REV.<br>A  |                                |
| CHECKED/DATE<br>M.HOLLMAN<br>9/21/94  |              | APPROVED/DATE<br>C.RIGGE<br>4/7/00                           |                                |
| SCALE: 5=1  | SHEET 1 of 1 |  |                                |