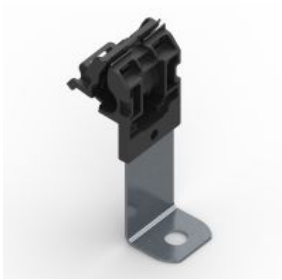


151-01438



Article Number: 151-01438

Description: Ratchet P-Clamp, .24"-.54" Bundle Dia, 90° Long, .41" Hole Dia, PA66HIRHSUV/ST/ZN, Black, 200/ctn

| Base Data                           |                                                                                                                                                                                                                                                                                                                                                                                                                                                                                                                                                                                                                                                                             |
|-------------------------------------|-----------------------------------------------------------------------------------------------------------------------------------------------------------------------------------------------------------------------------------------------------------------------------------------------------------------------------------------------------------------------------------------------------------------------------------------------------------------------------------------------------------------------------------------------------------------------------------------------------------------------------------------------------------------------------|
| Local Order Number                  | 151-01438                                                                                                                                                                                                                                                                                                                                                                                                                                                                                                                                                                                                                                                                   |
| Type                                | RCA90LM10                                                                                                                                                                                                                                                                                                                                                                                                                                                                                                                                                                                                                                                                   |
| Color                               | Black (BK)                                                                                                                                                                                                                                                                                                                                                                                                                                                                                                                                                                                                                                                                  |
| Features and benefits               | <ul style="list-style-type: none"> <li>• One-piece ratchet closure design allows for easy installation during pre- or final assembly.</li> <li>• Four sizes and multiple configurations handle a wide range of diameters and applications, reducing part inventory.</li> <li>• Clamp interior is designed to guide and center bundle to reduce pinching.</li> <li>• Easy release feature allows for quick adjustments and maintenance.</li> <li>• Impact modified, heat and UV stabilized PA66 provides long-term durability, indoors and out.</li> <li>• Steel mounting plate tolerates high torque mounting and is treated to resist chemicals and salt spray.</li> </ul> |
| Quantity Per                        | carton                                                                                                                                                                                                                                                                                                                                                                                                                                                                                                                                                                                                                                                                      |
| Product Description                 | The Ratchet P-Clamp family offers versatility when managing wires, cables and hoses. The robust design and durable materials make it ideal for heavy duty applications, both indoors and out. The one-piece adjustable clamp can be closed by hand to the desired diameter. The release feature provides easy and nondestructive removal of cables simply by using a flat-head screwdriver. This nondestructive release allows the clamp to be reused without removing or replacing any bolts or screws. The Ratchet P-Clamp is offered in four sizes and multiple mounting configurations.                                                                                 |
| Short Description                   | Ratchet P-Clamp, .24"-.54" Bundle Dia, 90° Long, .41" Hole Dia, PA66HIRHSUV/ST/ZN, Black, 200/ctn                                                                                                                                                                                                                                                                                                                                                                                                                                                                                                                                                                           |
| Product Dimensions                  |                                                                                                                                                                                                                                                                                                                                                                                                                                                                                                                                                                                                                                                                             |
| Minimum Tensile Strength (Imperial) | 100.0lbs                                                                                                                                                                                                                                                                                                                                                                                                                                                                                                                                                                                                                                                                    |
| Minimum Tensile Strength (Metric)   | 445.0N                                                                                                                                                                                                                                                                                                                                                                                                                                                                                                                                                                                                                                                                      |
| Length L (Imperial)                 | 5.11"                                                                                                                                                                                                                                                                                                                                                                                                                                                                                                                                                                                                                                                                       |
| Length L (Metric)                   | 129.9mm                                                                                                                                                                                                                                                                                                                                                                                                                                                                                                                                                                                                                                                                     |
| Length L2 (Imperial)                | 3.81"                                                                                                                                                                                                                                                                                                                                                                                                                                                                                                                                                                                                                                                                       |
| Fixation Method                     | Screw Mounting                                                                                                                                                                                                                                                                                                                                                                                                                                                                                                                                                                                                                                                              |
| Length L2 (Metric)                  | 96.8mm                                                                                                                                                                                                                                                                                                                                                                                                                                                                                                                                                                                                                                                                      |
| Variant                             | 90° Long                                                                                                                                                                                                                                                                                                                                                                                                                                                                                                                                                                                                                                                                    |
| Width W (Imperial)                  | 1.37"                                                                                                                                                                                                                                                                                                                                                                                                                                                                                                                                                                                                                                                                       |

151-01438



|                             |                                     |                                   |
|-----------------------------|-------------------------------------|-----------------------------------|
| Product Dimensions          | Width W (Metric)                    | 34.9mm                            |
|                             | Cable Tie Width Max. (Imperial)     | 0.52"                             |
|                             | Cable Tie Width Max. (Metric)       | 13.2mm                            |
|                             | Width W2 (Imperial)                 | 1.181"                            |
|                             | Width W2 (Metric)                   | 30.0mm                            |
|                             | Bundle Diameter Min. (Imperial)     | 0.24"                             |
|                             | Bundle Diameter Min. (Metric)       | 6.2mm                             |
|                             | Bundle Diameter Max. (Imperial)     | 0.54"                             |
|                             | Bundle Diameter Max. (Metric)       | 13.7mm                            |
|                             | Mounting Hole Diameter D (Imperial) | 0.405"                            |
|                             | Mounting Hole Diameter D (Metric)   | M10                               |
|                             | Mounting Hole Centers (Imperial)    | 0.98"                             |
|                             | Stud Size (Metric)                  | M10                               |
| Material and Specifications |                                     |                                   |
|                             | Material                            | Steel (ST)                        |
|                             | Material Shortcut                   | ZN                                |
|                             | Flammability                        | UL 94 HB                          |
|                             | Operating Temperature               | -40°F to +257°F (-40°C to +125°C) |
|                             | ROHS Compliant                      | Yes                               |
|                             | Stamping Material                   | Steel (ST)                        |
| Logistic and Packaging      |                                     |                                   |
|                             | Package Quantity (Imperial)         | 200                               |
|                             | Package Quantity (Metric)           | 200                               |
|                             | Customs Number(Schedule B)          | 3926909987                        |