

Flush-type connector - SACC-E-M12FST-4CON-M16/0,5 - 1424138

Please be informed that the data shown in this PDF Document is generated from our Online Catalog. Please find the complete data in the user's documentation. Our General Terms of Use for Downloads are valid (<http://download.phoenixcontact.com>)



Sensor/actuator flush-type plug, 4-pos., front/screw mounting with M16 thread, with 0.5 m PP litz wire, 4 x 1.5 mm²



Key commercial data

Packing unit	1 1
Custom tariff number	85366990
Country of origin	Germany

Technical data

Dimensions

Length of cable	0.5 m
-----------------	-------

Ambient conditions

Ambient temperature (operation)	-25 °C ... 85 °C
Degree of protection	IP67

General

Rated current at 40°C	12 A
Rated voltage	60 V
Number of positions	4
Contact resistance	≤ 3 mΩ
Insulation resistance	≥ 100 MΩ
Coding	T power
Standards/regulations	M12 connector
Signal type/category	Universal
Status display	No
Surge voltage category	III
Pollution degree	3

Flush-type connector - SACC-E-M12FST-4CON-M16/0,5 - 1424138

Technical data

General

Connection method	Individual wires
Torque	(M12 connector)
Mounting type	Front mounting M16 x 1.5 With flat nut

Material

Contact material	CuZn
Contact surface material	Au
Contact carrier material	PA6
Material, knurls	CuZn alloy, nickel-plated
Sealing material	FKM

Cable

Cable type	PP litz wire
AWG signal line	16
Wire colors	Black, brown, blue, white, gray
Conductor material	Bare Cu litz wires
Ambient temperature (operation)	-40 °C ... 90 °C (cable, fixed installation)

Classifications

eCl@ss

eCl@ss 4.0	27140815
eCl@ss 4.1	27140815
eCl@ss 5.0	27143423
eCl@ss 5.1	27143423
eCl@ss 6.0	27143423
eCl@ss 7.0	27449001
eCl@ss 8.0	27449001

ETIM

ETIM 3.0	EC002061
ETIM 4.0	EC002062
ETIM 5.0	EC002062

UNSPSC

UNSPSC 6.01	31251501
UNSPSC 7.0901	31251501
UNSPSC 11	31251501
UNSPSC 12.01	31251501

Flush-type connector - SACC-E-M12FST-4CON-M16/0,5 - 1424138

Classifications

UNSPSC

UNSPSC 13.2	31251501
-------------	----------

Accessories

Accessories

Flat nut

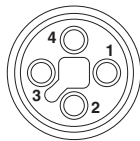
Flat nut - SACC-E-MU-M16 - 1504097



Flat nut with M16 thread

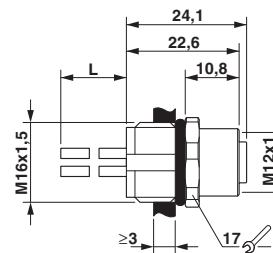
Drawings

Schematic diagram



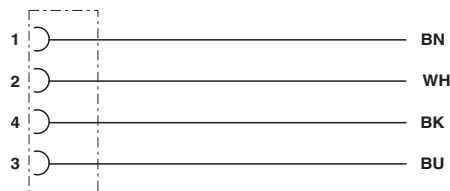
Connector pin assignment of M12 socket, 4-pos., T-coded, view of socket side

Dimensioned drawing



M12 flush-type socket

Circuit diagram



Contact assignment of the M12 socket

