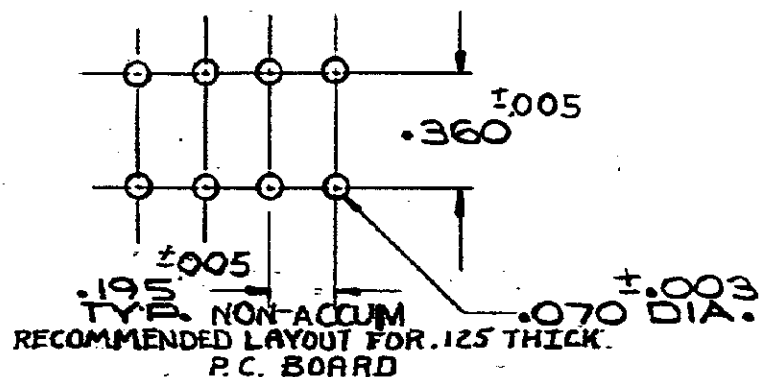
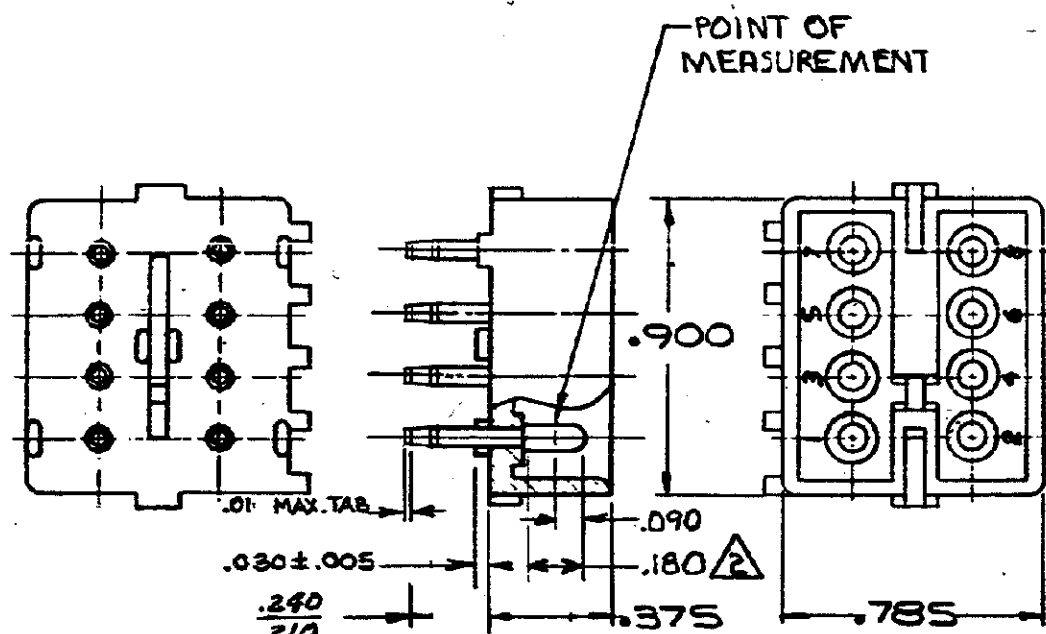


S



1. PARTS COMPLY WITH AMP SOLDERABILITY

SPEC. NO. 109-11-3

2 CONTACT IS PLATED OVERALL WITH .000050 NICKEL, THEN .000030-GOLD OVER CONTACT LENGTH INDICATED AND MATTE TIN ON SOLDER TAIL END.

3 OBSOLETE PARTS: OBSOLETE CIS STREAMLINING- PER D.RENAUD/D.SINISI

3 OBSOLETE

ASSEMBLY NO.	HGS. MATL. - COLOR	FIN MATL. - FINISH
350426-2	NYLON - NATURAL	COPPER ALLOY - GOLD
350426-11	NYLON - NATURAL	COPPER ALLOY - PRE-TIN

DIMENSIONS IN INCHES. DO NOT SCALE PRINT.

PRINT DIST 59

L2	REV PER ECO-10-000445	KK	AEG	09JAN
LTR	REVISION RECORD	DR	CHK	DATE

REQUIRED PER ASSEMBLY NUMBER 350426	DWG SIZE NUMBER NAME REMARKS ITEM NO.	© 1978 BY AMP INCORPORATED. ALL RIGHTS RESERVED. AMP PRODUCTS COVERED BY PATENTS AND/OR PATENTS PENDING.	CUSTOMER COPY REFERENCE ONLY
	DATE 6-27-73 BY 9. Colman	MATERIAL AND FINISH SEE TABLE	AMP INCORPORATED BARRINGTON, ILL.
	DATE 6-28-73 BY E. Bremer	WIRE - RANGE - INSULATION TOLERANCE EXCEPT AS NOTED SCALE LOC CM B NO 350426	CLASS TYPE
	DATE 6-28-73 BY E. Bremer	NAME B CIRCUIT MATE-N-LOK P.C. BOARD PIN HEADER	REV L2