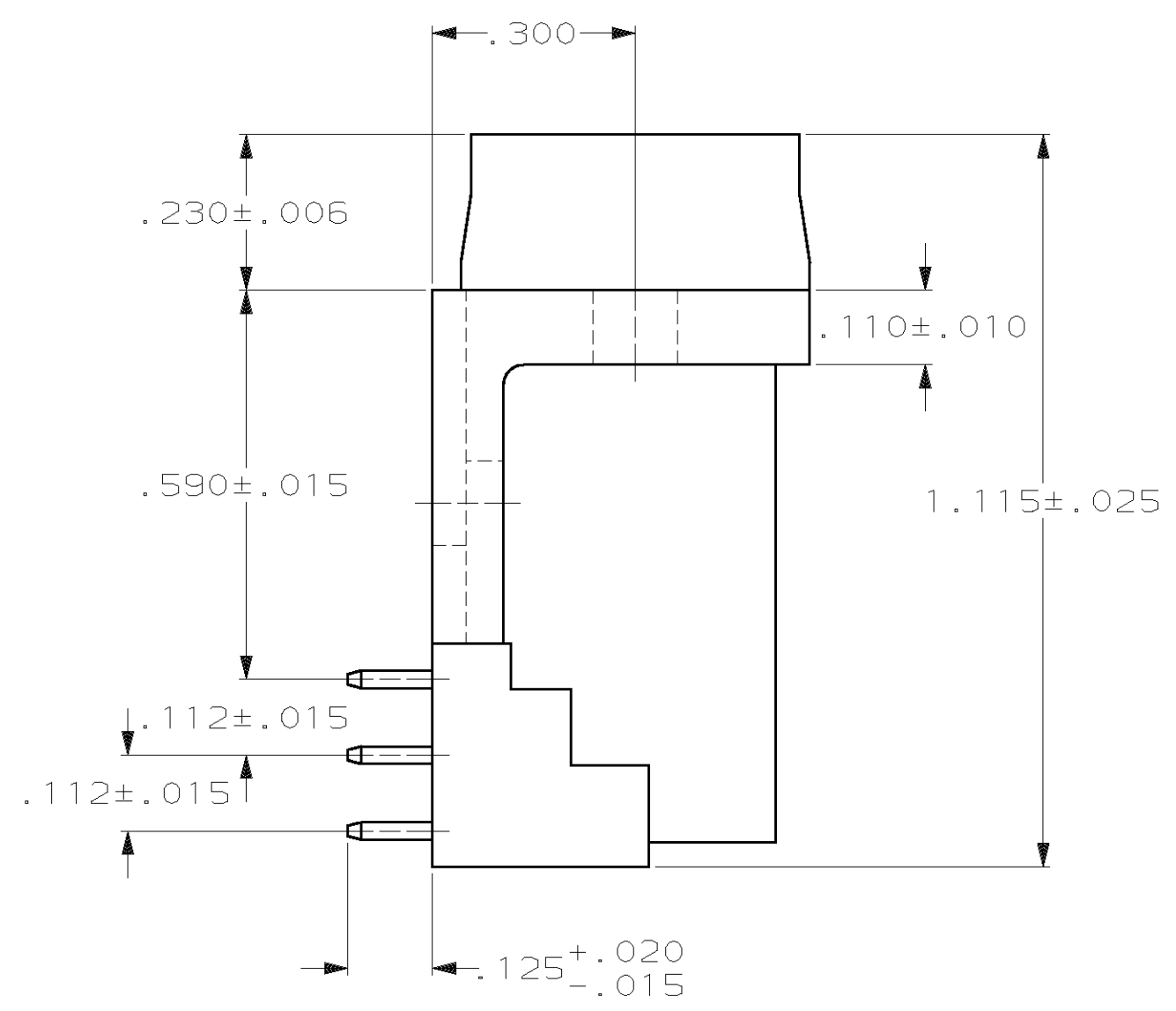
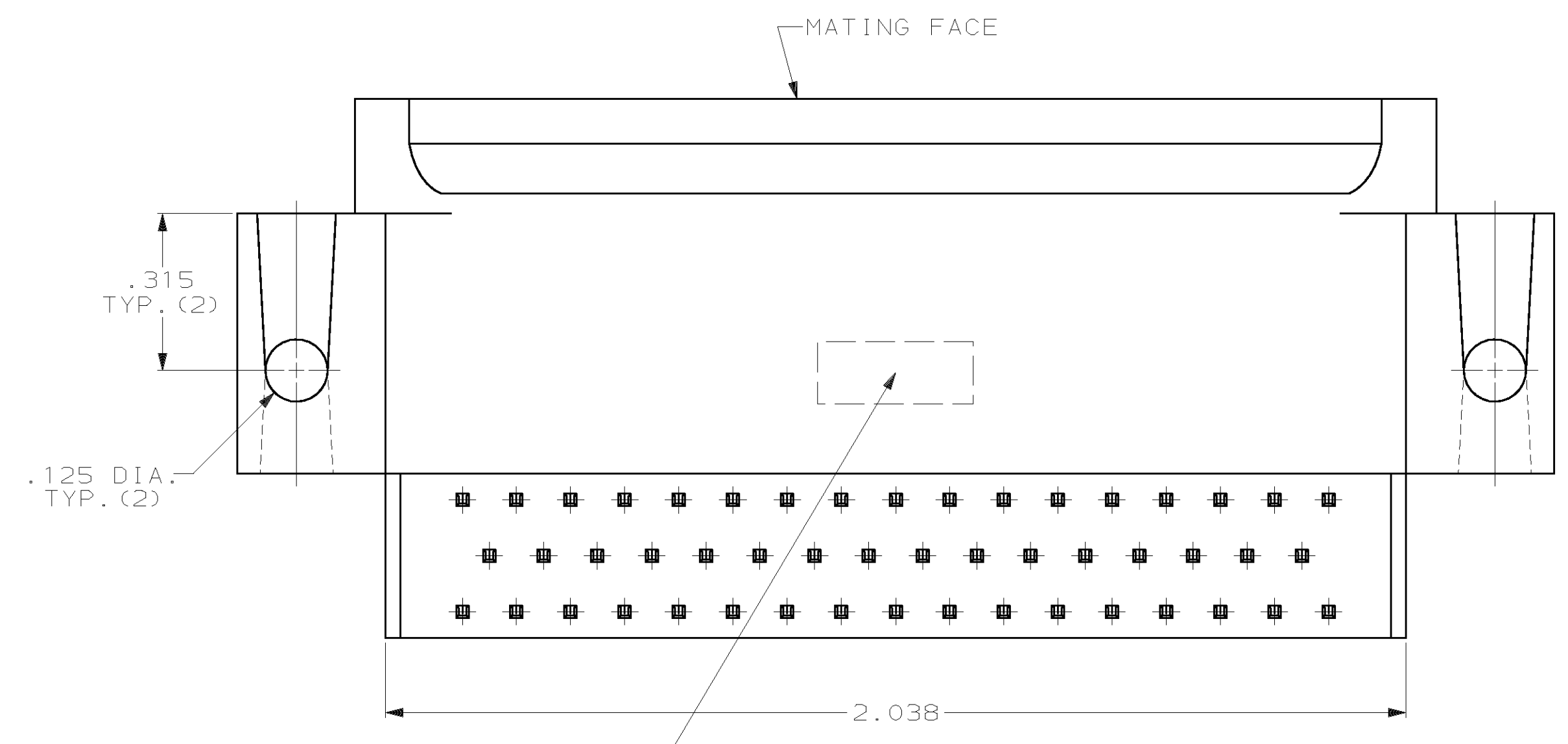
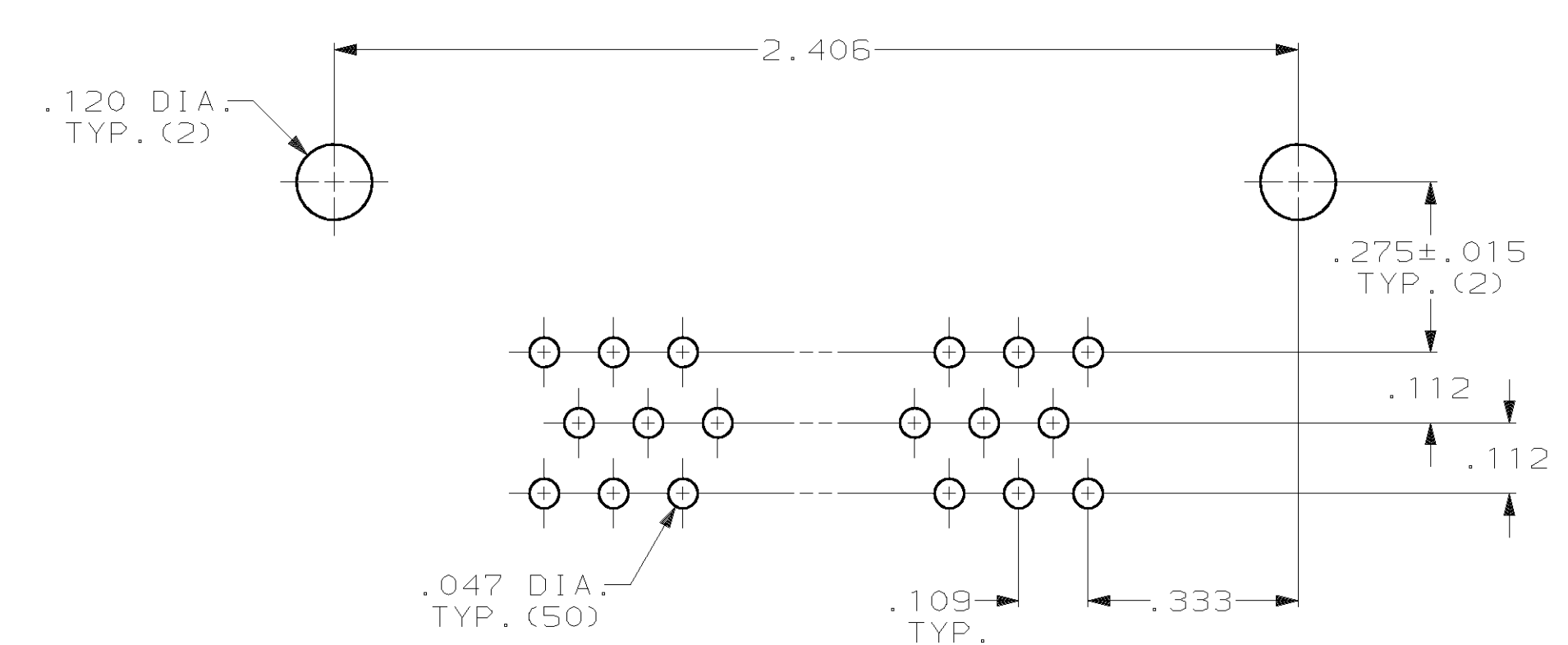


1. CONNECTOR MATES WITH ANY 50 POS. RECEPTACLE IN AMPLIMITE SERIES & COMPLIES WITH AMP SPEC. 108-40,005 WHERE APPLICABLE.
2. FLAME RETARDANT 94V-0 RATED THERMOPLASTIC; COLOR: BLACK.
3. BRASS PER MIL-C-50.
4. GOLD PLATING PER MIL-G-45204, TIN PLATING PER MIL-T-10727, NICKEL PLATING PER QQ-N-290.
5. GOLD PLATED FOR LENGTH OF .150 MIN FROM MATING END, .000030 MIN GOLD IN MATED AREA, .000100 MIN TIN-LEAD ON OPPOSITE END, BOTH OVER .000050 MIN NICKEL.
6. .000050 GOLD FOR LENGTH OF .150 MIN. FROM MATING END, GOLD FLASH ON REMAINDER, ALL OVER .000050 NICKEL ON ENTIRE CONTACT.
7. GOLD PLATED FOR LENGTH OF .150 MIN FROM MATING END, GOLD FLASH IN MATED AREA, .000100 MIN TIN-LEAD ON OPPOSITE END, BOTH OVER .000050 MIN NICKEL.



"AMP", PART NO. & DATE CODE, STAMPED IN AREA INDICATED, ON FAR SIDE



P.C. BOARD MOUNTING DIMENSIONS

OBSOLETE	206971-5
OBSOLETE	206971-4
OBSOLETE	206971-3
	206971-2
	206971-1
CONTACT FINISH	PART NUMBER

THIS DRAWING IS A CONTROLLED DOCUMENT.		DWN: J. GERACE 6-8-84	AMP Incorporated Harrisburg, PA 17105-3608
DIMENSIONS INCHES		CHK: J. GERACE 6-8-84	
TOLERANCES UNLESS OTHERWISE SPECIFIED:		APP'D: R. TAYLOR 6-21-84	NAME: PLUG ASSEMBLY, SIZE 5, 50 POS., RIGHT ANGLE, .590 SERIES, .025 SQ. POSTS, AMPLIMITE HDP
0 PLC ± .005		PRODUCT SPEC: -	
1 PLC ± .005		APPLICATION SPEC: -	SIZE: A1
2 PLC ± .005		FINISH: -	CAGE CODE: 00779
3 PLC ± .005		CONTACTS: SEE TABLE	DRAWING NO: 206971
4 PLC ± .005		RESTRICTED TO: -	SCALE: 4:1
MATERIAL: MOLDED PARTS: CONTACTS: -		WEIGHT: -	SHEET: 1 OF 1
CUSTOMER DRAWING		REV: -	REV: -