



Quick Start Guide

TMG3992 EVM

**TMG3992 Light-To-Digital Color Ambient Light Sensor / Proximity Sensor
Evaluation Kit with IRBeam™ Support**

Version 1.0



Contents

Out of the Box.....	3
Software Installation	3
Connect Hardware.....	4
Start the Application	4



Out of the Box

Each TMG3992 EVM comes with the following components:

- Controller board v2.1
- TMG3992 Daughterboard
- USB Cable with A connector and mini B connector
- Flash Drive with Application Software and Documents



Figure 1 TMG3992 EVM Kit

Software Installation

Most PCs should have one or more Universal Serial Bus (USB) ports. Install the ams flash drive into an unused USB port.

1. Double-click the Setup.exe file on the flash drive, or
2. Click Start -> Click Run -> Type E: setup.exe and press Enter. IMPORTANT: Use the appropriate drive letter in the above command to install the software. Flash Drive will commonly be assigned the next available drive letter for example C: hard drive D: CD-ROM E: flash drive

The Digital Light Sensor Setup Wizard will open and guide you through the installation of the TMG3992 host software, (Figures 2 through 8). To re-install, run the setup.exe file again. To remove the software from your computer Select ams -> TMG3992 EVM > Uninstall TMG3992EVM or use the Windows Control Panel (Figure 9).



Connect Hardware

Plug the TMG3992 Daughterboard into the Controller board. (Figure 1) Always use ESD procedures when handling the EVM.

Using the enclosed USB cable, plug the mini-B connector into the EVM module. Using the other end of the cable, plug the USB A-connector into a USB port on the computer.

Start the Application

Click the Digital Light Sensors icon on the desktop.



Figure 2 Welcome Screen

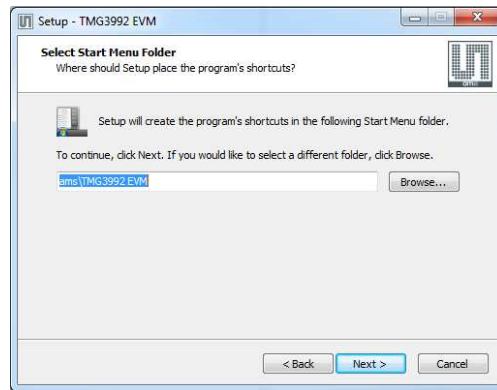


Figure 5 Select Start Menu Folder

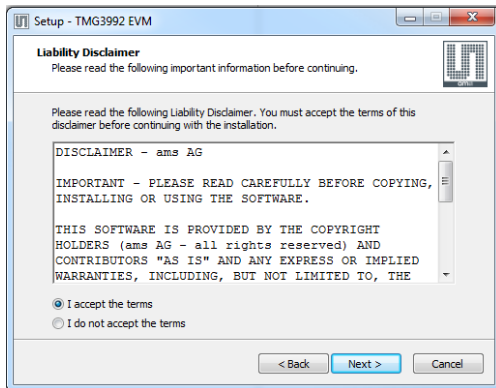


Figure 3 Liability Disclaimer

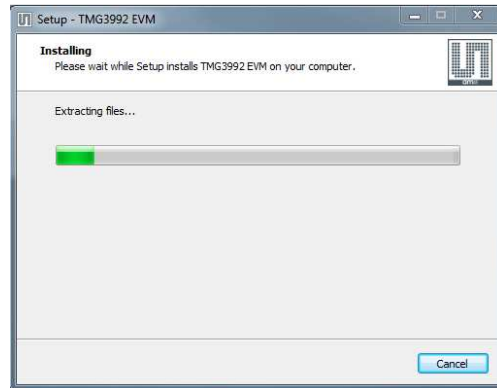


Figure 6 Installation in Progress

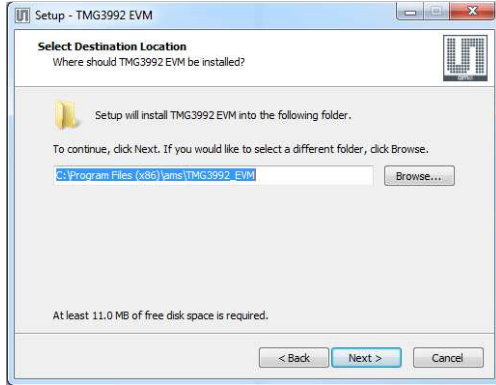


Figure 4 Select Installation Folder

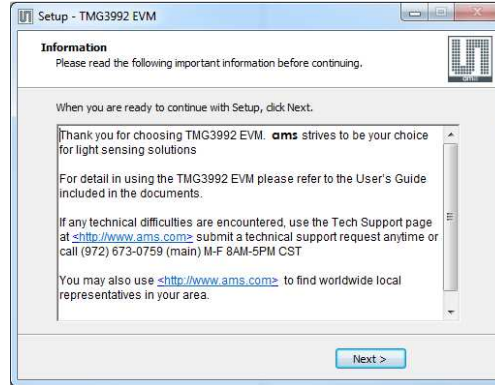


Figure 7 Thank You Screen

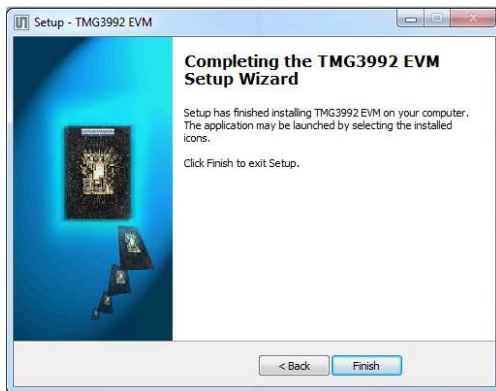


Figure 8 Installation Completed Successfully



Figure 9 Remove Installation

Contact and Support

For detail in using the TMG3992 EVM please refer to the User's Guide included in the documents.

If any technical difficulties are encountered, use the Tech Support page at www.ams.com/Support to submit a technical support request anytime or call (972) 673-0759 (main) M-F 8AM-5PM CST

You may also use <http://www.ams.com> to find worldwide local representatives in your area.