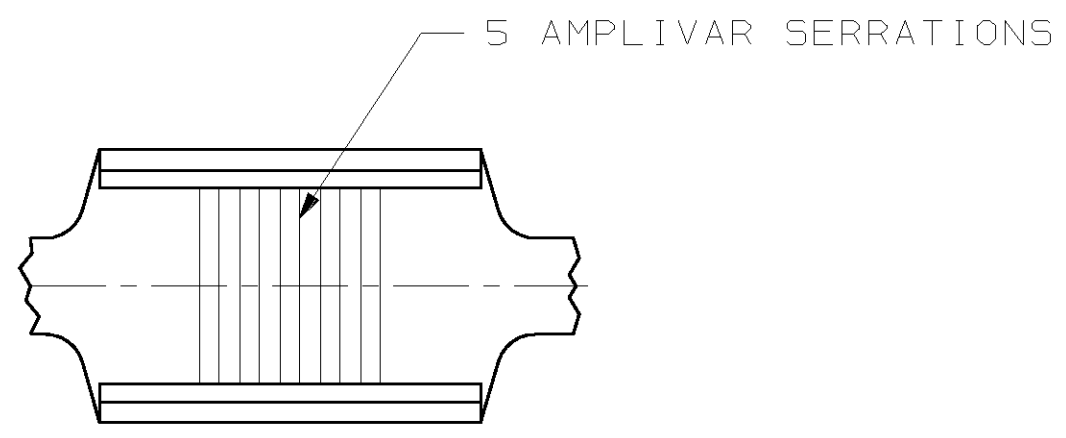
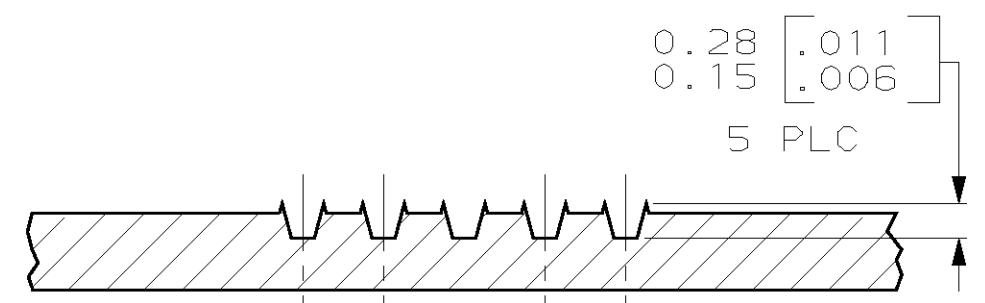
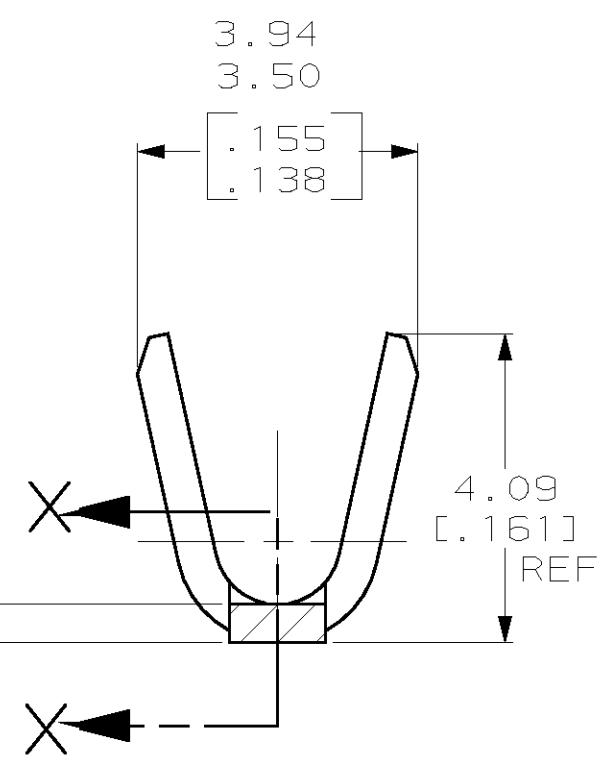
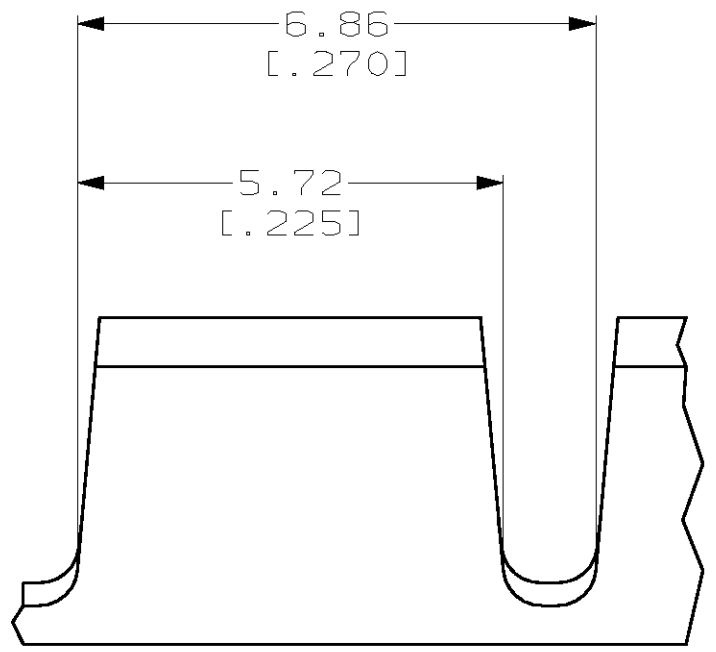


THIS DRAWING IS UNPUBLISHED. RELEASED FOR PUBLICATION ,19 .
 © COPYRIGHT 19 BY AMP INCORPORATED. ALL RIGHTS RESERVED.

LOC		DIST		REVISIONS			
P	LTR	DESCRIPTION	DATE	DWN	APVD		
AF	50	C	REVISED PER 0G3A-0280-02	03JUN02	MF	GP	



- 1 CONTINUOUS STRIP ON REELS.
 - 2 WIRE SIZE IS 1500-5000 CMA $\triangle 3$
- $\triangle 3$ CRIMP WIDTH: .110 F TYPE (AMPLIVAR THRU)
 CRIMP HEIGHT ($\pm .002$) = (TOTAL CMA + 10,700) / 193,400
 GENERAL APPLICATION GUIDELINES MUST BE FOLLOWED AS SPECIFIED IN CATALOG #82221
 FOR APPLICATOR INFORMATION CALL: 1-800-722-1111
 FOR PRODUCT INFORMATION CALL: 1-800-522-6752



SECTION A-A
SCALE 20:1

0.51 \pm 0.025
[.020 \pm .001]

41899
PART NO.

THIS DRAWING IS A CONTROLLED DOCUMENT.		DWN JR RUTH 08SEP00	AMP Incorporated Harrisburg, PA 17105-3608	
DIMENSIONS: MM [INCHES]		CHK MS FEHER 08SEP00		
TOLERANCES UNLESS OTHERWISE SPECIFIED:		APVD G PORTA 08SEP00	NAME SPLICE, AMPLIVAR	
0 PLC \pm - 1 PLC \pm - 2 PLC \pm 0.38 [.015] 3 PLC \pm - 4 PLC \pm - ANGLES \pm -		PRODUCT SPEC -	DRAWING NO 114-2009	
MATERIAL 082 BRASS		FINISH 0.00254 [.000100] MIN TIN	APPLICATION SPEC 114-2009	RESTRICTED TO -
		WEIGHT -	SIZE A3	CAGE CODE 00779
		CUSTOMER DRAWING	SCALE 10:1	SHEET 1 OF 1
			DRAWING NO C- 41899	REV C